

# GOIN' TO BETHLEHEM

for S.A.T.B. voices, a cappella\*

Words and Music by  
JAY ALTHOUSE

Spirited! (♩ = ca. 100-104)

SOPRANO  
ALTO

TENOR  
BASS

Go - in' to Beth - le - hem, go - in' to Beth - le - hem.

Go-in' to Beth - le-hem, go-in' to Beth - le-hem. Go-in' to Beth - le-hem, see that ba - by.

Go-in' to Beth - le-hem, see that child. Go-in' to Beth - le-hem, see that ba - by.

gon-na take a while. Go-in' to Beth - le-hem, gon-na take a, Go-in' to Beth - le-hem, go-in' to Beth - le-hem.

8 1. 2.

Go-in' to Beth - le-hem, go-in' to Beth - le-hem. Go-in' to Beth - e-le - hem.

10 *sub. f*

Look o - ver yon-der and see the wise \_\_\_ men, on a jour - ney they trav-el a - far.  
Look o - ver yon-der and see the shep - herds watch-ing o - ver their flocks\_ by night.

*f*

Look

12

Look o - ver yon-der and see the wise \_\_\_ men, led to Beth - le-hem by a star.  
Look o - ver yon-der and see the shep - herds, by the light\_ of a star so bright.

yon - der,

14 *mf*

Go-in' to Beth - le-hem, see that ba - by. Go-in' to Beth - le-hem, see that child.

*mf*

16 gon-na take a

Go-in' to Beth - le-hem, see that ba - by. Go-in' to Beth - le-hem, gon-na take a,

1. 18 while. *decresc.*

Go-in' to Beth - le-hem, *decresc.* go-in' to Beth - le-hem. Go-in' to Beth - e - le - hem.

2. 20 while.

Go-in' to Beth - le-hem, go-in' to Beth - le-hem. Go-in' to Beth - e - le - hem.

*f* I'm gon - na

22 Sing heav-en-ly mel - o-dies when I see\_\_ that child.

*f* Sing } heav-en-ly mel - o-dies when I see\_\_ that child.

sing heav-en-ly mel - o-dies when I see\_\_ that child. I'm gon - na

24 Sing heav-en-ly mel - o-dies when I see — that child.

Sing } heav-en-ly mel - o-dies when I see — that child.

sing heav-en-ly mel - o-dies when I see — that child. I'm gon - na

26 Shout, shout hal - le-lu - jah when I see — that child.

shout hal - le-lu - jah when I see — that child. I'm gon - na

28 Shout, shout hal - le-lu - jah when I see — that child. Oh,

shout hal - le-lu - jah when I see — that child. Oh,

30 Go-in' to Beth - le-hem, see that ba - by. Go-in' to Beth - le-hem, see that child.

32 gon-na take a

Go-in' to Beth - le-hem, see that ba - by. Go-in' to Beth - le-hem, gon-na take a,

34 while.

Go-in' to Beth - le-hem, go-in' to Beth - le-hem. Go-in' to Beth - e - le - hem.

36

Look o - ver yon-der and see the an - gels; from the heav-ens they come to earth.

Look

38

Look o - ver yon-der and see the an - gels, sing - ing praise\_ of a ba - by's birth.

yon - der sing - ing praise\_ of a ba - by's birth.

sub. *pp*

Go-in' to Beth - le-hem, see that ba - by. Go-in' to Beth - le-hem, see that child.

sub. *pp*

42

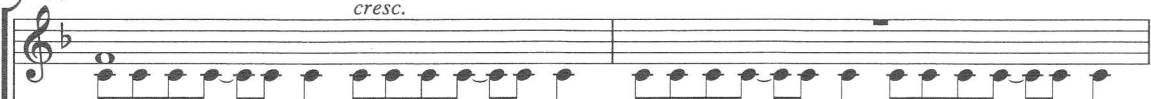


Go-in' to Beth - le-hem, see that ba - by. Go-in' to Beth - le-hem, gon-na take a,



while.

44



Go-in' to Beth - le-hem, go-in' to Beth - le-hem. Go-in' to Beth - le-hem, go-in' to Beth - le-hem.



46 DESCANT



Go. \_\_\_\_\_ Now, go, see that child.



Go-in' to Beth - le-hem, see that ba - by. Go-in' to Beth - le-hem, see that child.



Go. Go-in' to Beth - le-hem, gon-na take a

Go-in' to Beth - le-hem, see that ba - by. Go-in' to Beth - le-hem, gon-na take a

while. Go-in' to Beth - le-hem, go-in' to Beth - le-hem. Go-in' to Beth - e - le - hem.

**mp** gradual *cresc.* Go-in' to Beth - le-hem, go-in' to Beth - le-hem, go-in' to Beth - le-hem to see that,

**mp** gradual *cresc.* Go-in' to Beth - le-hem, go-in' to Beth - le-hem, go-in' to Beth - le-hem to see that,

child. Go-in' to Beth - le-hem, go-in' to Beth - le-hem. Go-in' to see that child.