

Qualcomm IMEI & SN Writer Tool Guidance

For Smart Phone

**MOBILE TERMINAL
(V1.0)**




COMPANY CONFIDENTIAL
All Rights Reserved

Contents

CHAPTER 1: PREPARATIONS BEFORE USING	3
CHAPTER 2: USB DRIVER INSTALLATION	4
CHAPTER 3: IMEI/SN/BT/WIFI READ PROCEDURE	7
CHAPTER 4: IMEI & SN WRITE PROCEDURE	9

Chapter 1: Preparations before Using

Item	Description	Remarks
Tools list	Battery for Mobile Phone	It gives the power to Mobile phone.
	Customer Qwrite_Writer	Qualcomm IMEI&SN&BT&WIFI writer tool
	Qualcomm_Setup	Qualcomm USB Driver for Smart phone
	USB Data Cable	Generic USB data cable
	Personal Computer (PC)	<p>Recommended PC HW requirements:</p> <ul style="list-style-type: none"> • Computer processor: Pentium 700 MHz or higher • RAM 256 MB or higher • Disk space 100-200 MB or higher <p>Supported operating systems:</p> <ul style="list-style-type: none"> • Windows 2000 Service Pack 3 or higher • Windows XP Service Pack 2 or higher • Windows Vista or 7
<u>Remark:</u>	 <p>USB Data Cable</p>	

Chapter 2: USB driver installation

Qualcomm USB Port Driver Install

Step one: Run “qualcomm_Setup.exe” to install USB driver.

(Attention: Do not connect the cable with PC, when you install the driver.)

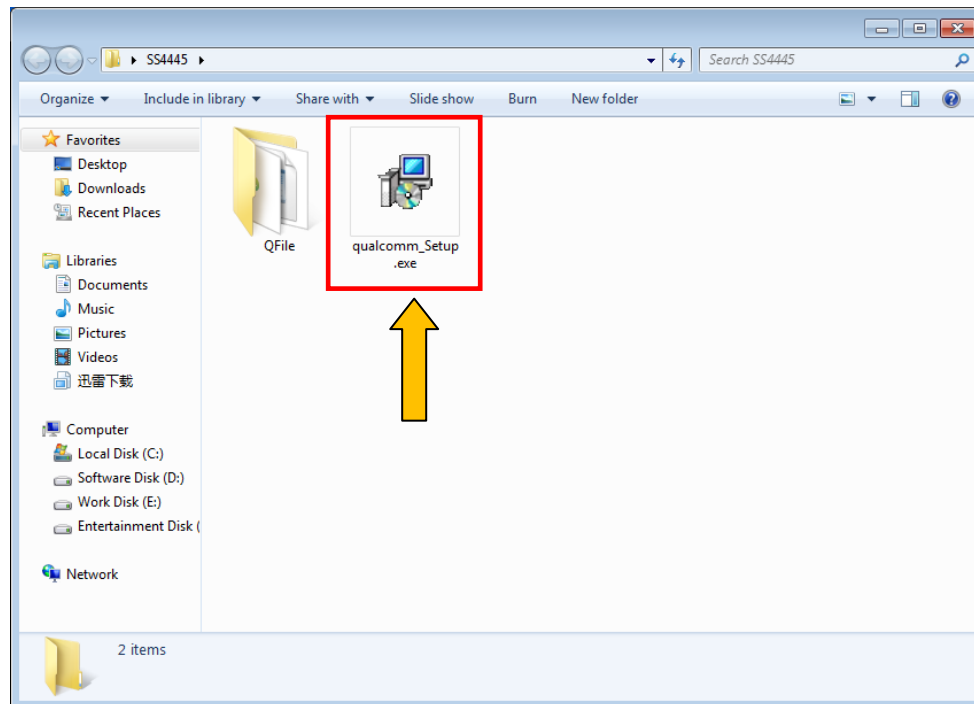


Figure 2-1 qualcomm_Setup.exe

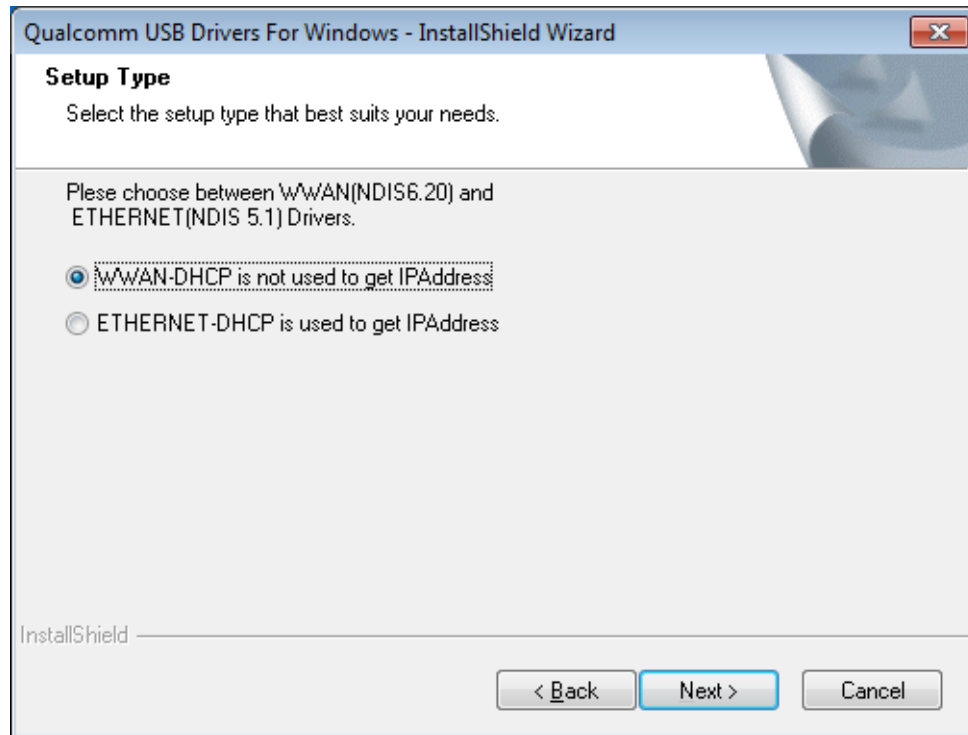


Figure 2-2 Driver installing progress

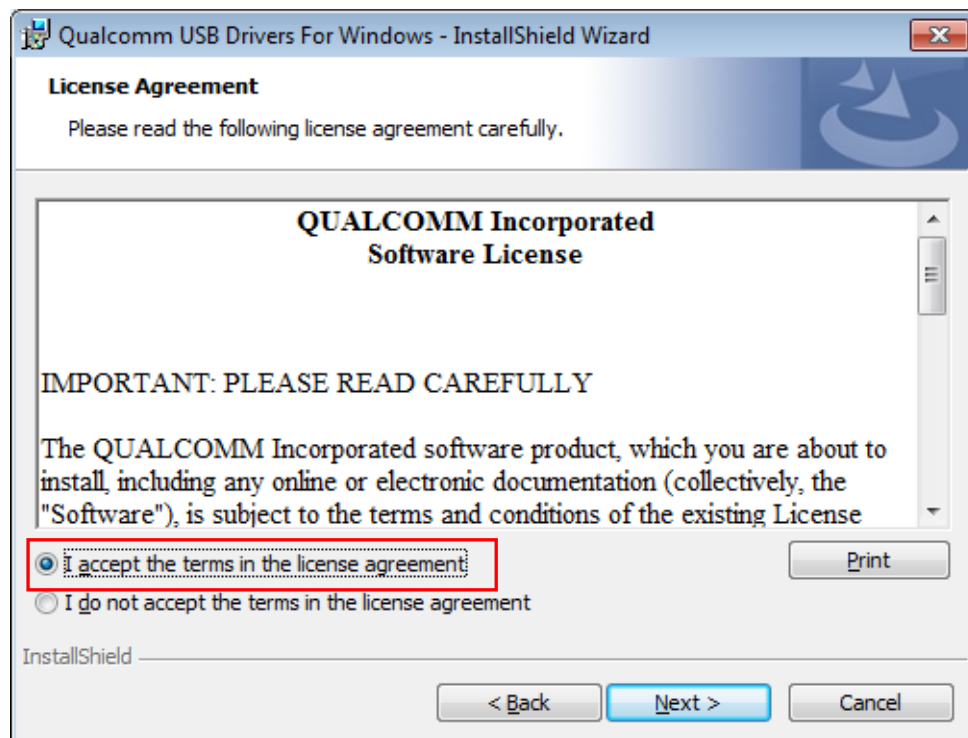


Figure 2-3 Driver installing progress

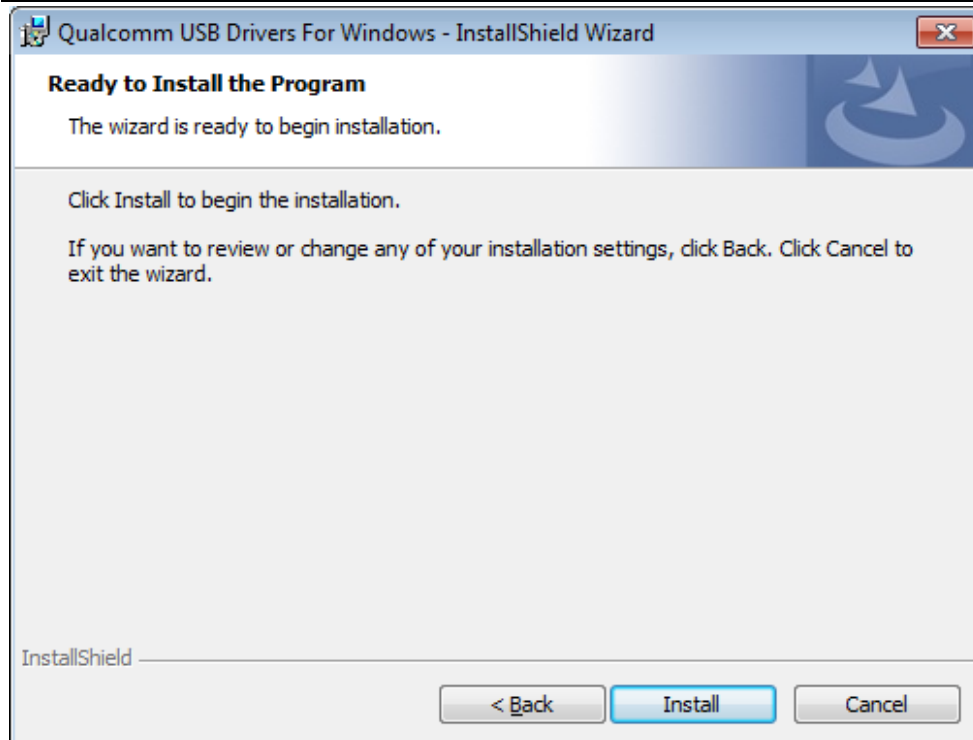


Figure 2-4 Driver installing progress

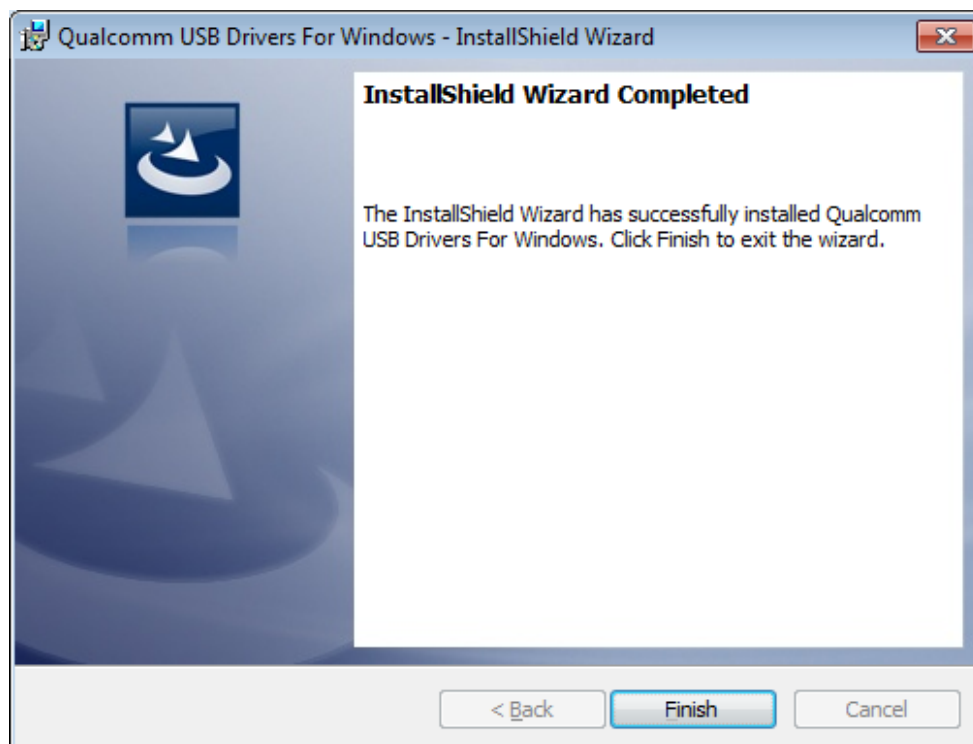


Figure 2-5 Driver installing complete

Step two: power on the phone and connect to PC with USB cable, PC detect the hardware and start to install driver automatically.



Once the driver installed completed, open the “device manager” to check the COM port, the COM port should appear as below:

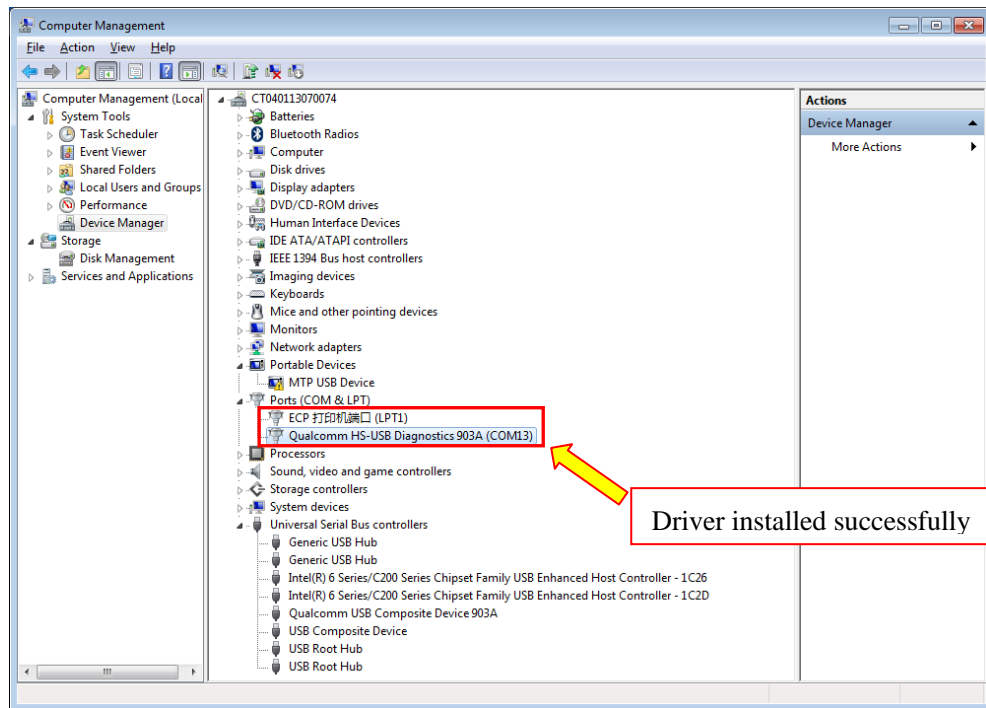


Figure 5.2-6 USB COM port

Chapter 3: IMEI/SN/BT/WIFI Read Procedure

Step one: Run the “Qwrite_Writer.exe”, the writer tool interface is as below screenshot



Figure 3-1: “Qwrite_Writer” window

Step two: select the items you want to read from phone as below picture:

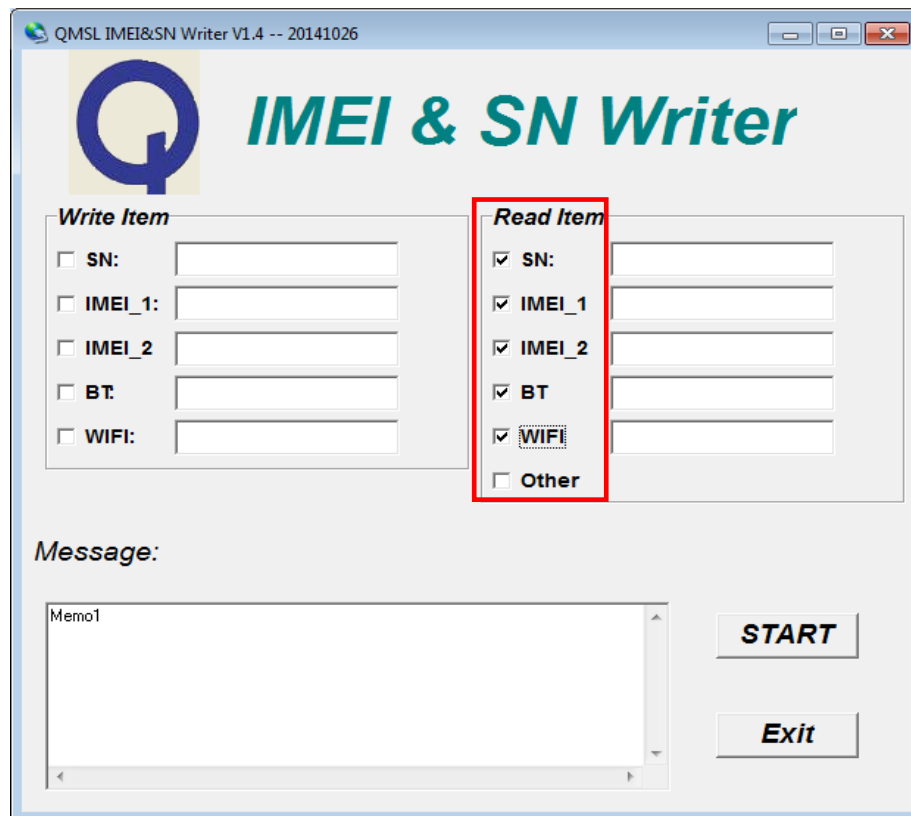


Figure 3-2: Choose items to be read

Step three: power on phone, connect to PC with USB cable, then click “start” to start to read from phone. The item number will appear in the corresponding row.



Figure 3-3: read items success

Chapter 4: IMEI/SN/BT/WIFI Write Procedure

Step one: Run the “Qwrite_Writer.exe”, the tool interface is as below screenshot.



Figure 3-1: “IMEI & SN Writer” window

Step two: choose the item you want to write into phone, then input the corresponding number



Figure 3-2: input items number

Step three: power on phone, connect to PC with USB cable, click “start” to write items into phone:

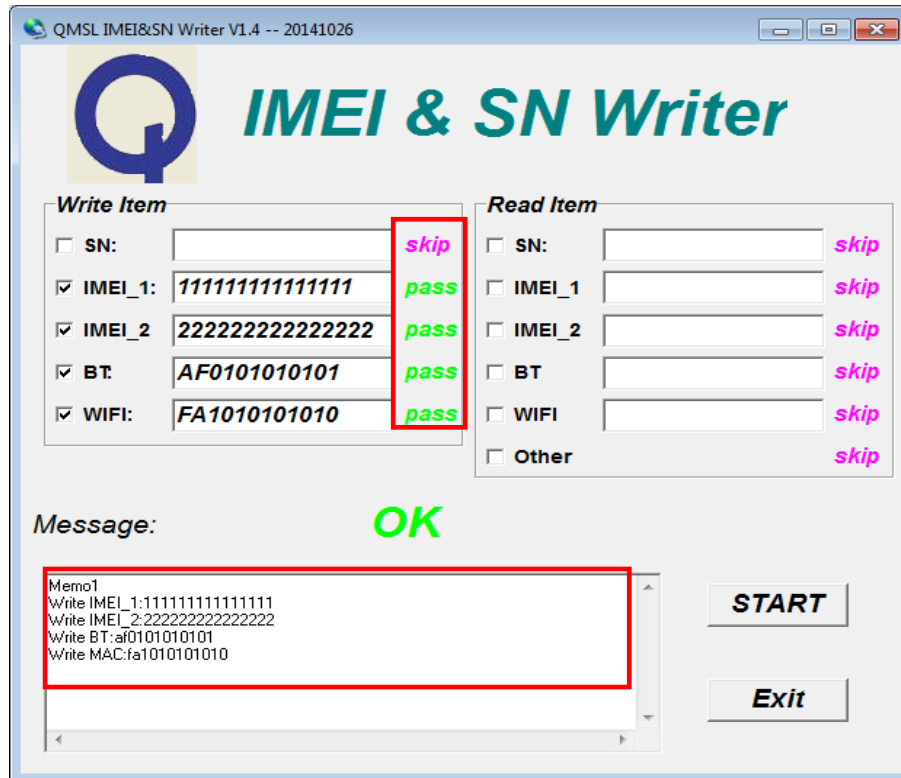


Figure 3-2: write items success