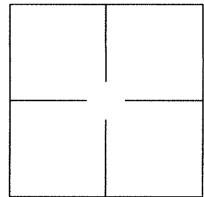


# CORNER RECORD

Agency Index BK 119 PG 46Document Number CR 12500City of OAKLANDCounty of ALAMEDA, CaliforniaBrief Legal Description MONUMENT NEAR 25 CASTLE PARK WAY.

## CORNER TYPE

Government Corner ☐ Control ☐  
Meander ☐ Property ☐  
Rancho ☐ Other ☒

Date of Survey 2018-11-07

## COORDINATES (Optional)

N. \_\_\_\_\_ E. \_\_\_\_\_

Elevation \_\_\_\_\_

Units Metric ☐ U.S. Survey Foot ☐

Horizontal Datum \_\_\_\_\_

Zone \_\_\_\_\_ Epoch Date \_\_\_\_\_

Vertical Datum: \_\_\_\_\_

☐ Complies with Public Resources Code §§8801-8819☐ Complies with Public Resources Code §§8890-8902PLS Act Ref.: ☐ 8765(d) ☒ 8771 ☐ 8773 Other: \_\_\_\_\_

Corner/  
Monument: ☐ Left as found ☐ Established ☐ Rebuilt ☒ Pre-Construction  
☐ Found and tagged ☐ Reestablished ☒ Referenced ☐ Post-Construction

Narrative of corner identified and monument as found and set or reset:

☒ See sheet #2 for description(s):

FOUND MONUMENT TP91P2 ON 25 CASTLE PARK WAY AS SHOWN ON SHEET 2.

## SURVEYOR'S STATEMENT

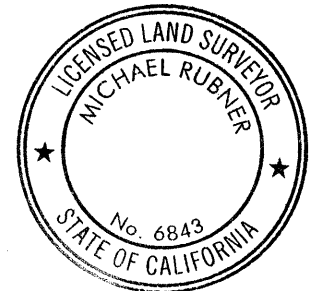
This Corner Record was prepared by me or under my direction in conformance with

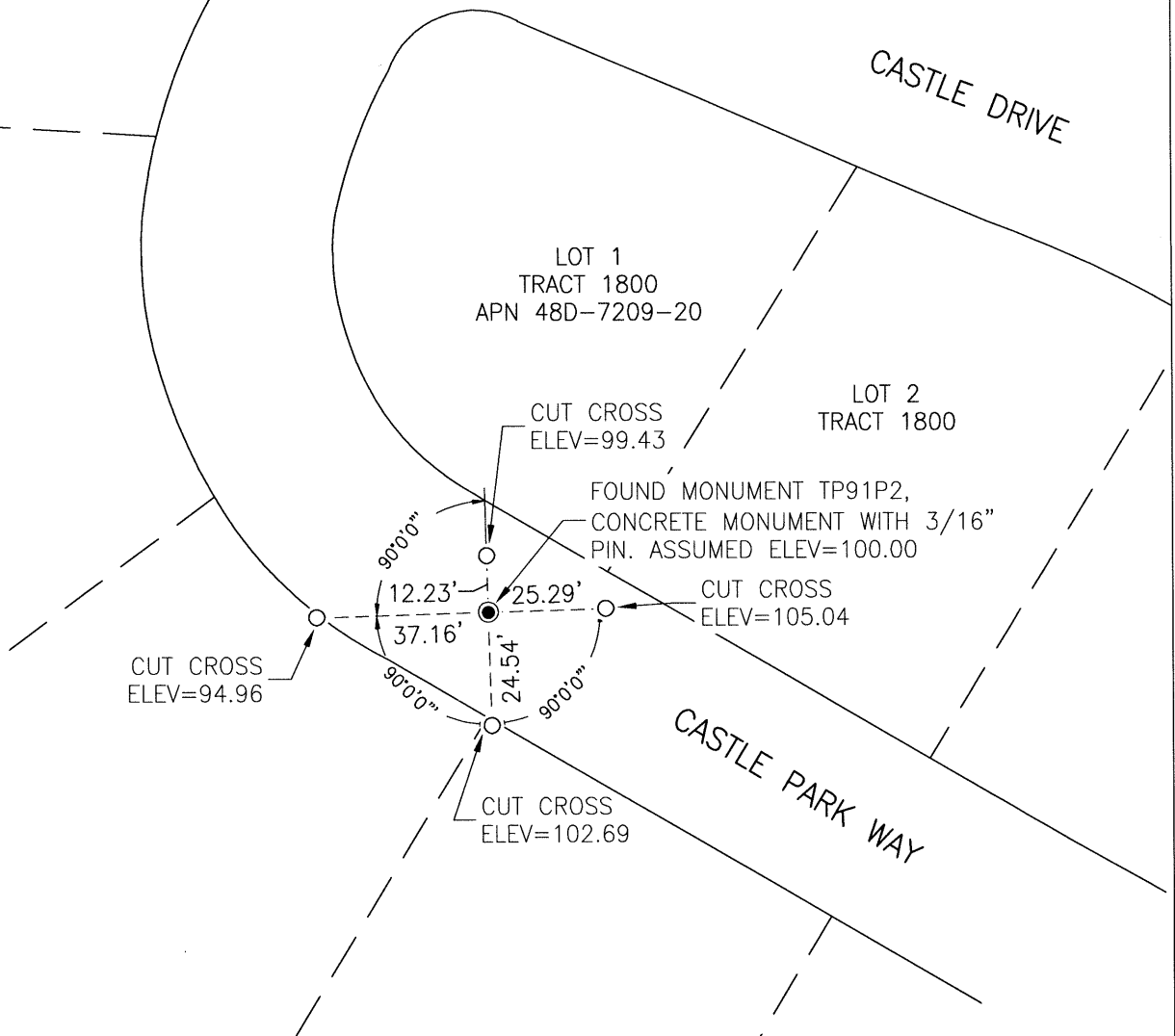
the Land Surveyor's Act on 20 FEBRUARY, 2019.Signed [Signature] P.L.S. or R.C.E. No.: 8040

## COUNTY SURVEYOR'S STATEMENT

This Corner Record was received 4 DECEMBER 2018 and examined  
and filed 2 MAY 2019.Signed [Signature] P.L.S. or R.C.E. No.: 6843Title COUNTY SURVEYOR

County Surveyor's Comment \_\_\_\_\_





## LEGEND

- SET REFERENCE POINT AS NOTED TAGGED LS 8040
- FOUND MONUMENT AS NOTED

SCALE

1" = 40'

## NOTES

1. ALL BEARINGS AND DISTANCES SHOWN HEREON ARE MEASURED UNLESS OTHERWISE NOTED.
2. ALL DISTANCES AND DIMENSIONS SHOWN ARE IN FEET AND DECIMAL PARTS THEREOF.
3. ALL RECORD INFORMATION SHOWN IS FROM ALAMEDA COUNTY RECORDS.
4. NO CLAIM IS MADE AS TO THE RELATIONSHIP OF THE MONUMENTS FOUND AND SHOWN HEREON TO BE TRUE BOUNDARY LOCATIONS.