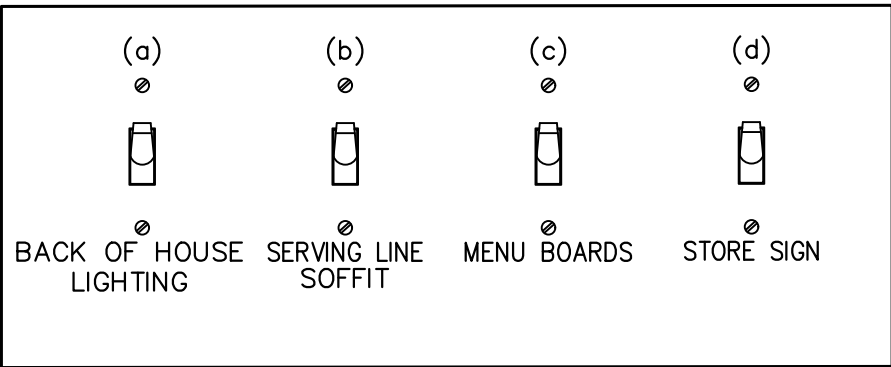


NOTE:
CONTRACTOR TO INSTALL 3 GANG SWITCH BOX AS SHOWN
BELOW. DO NOT INSTALL SEPARATE/INDIVIDUAL BOXES FOR EACH
SWITCH

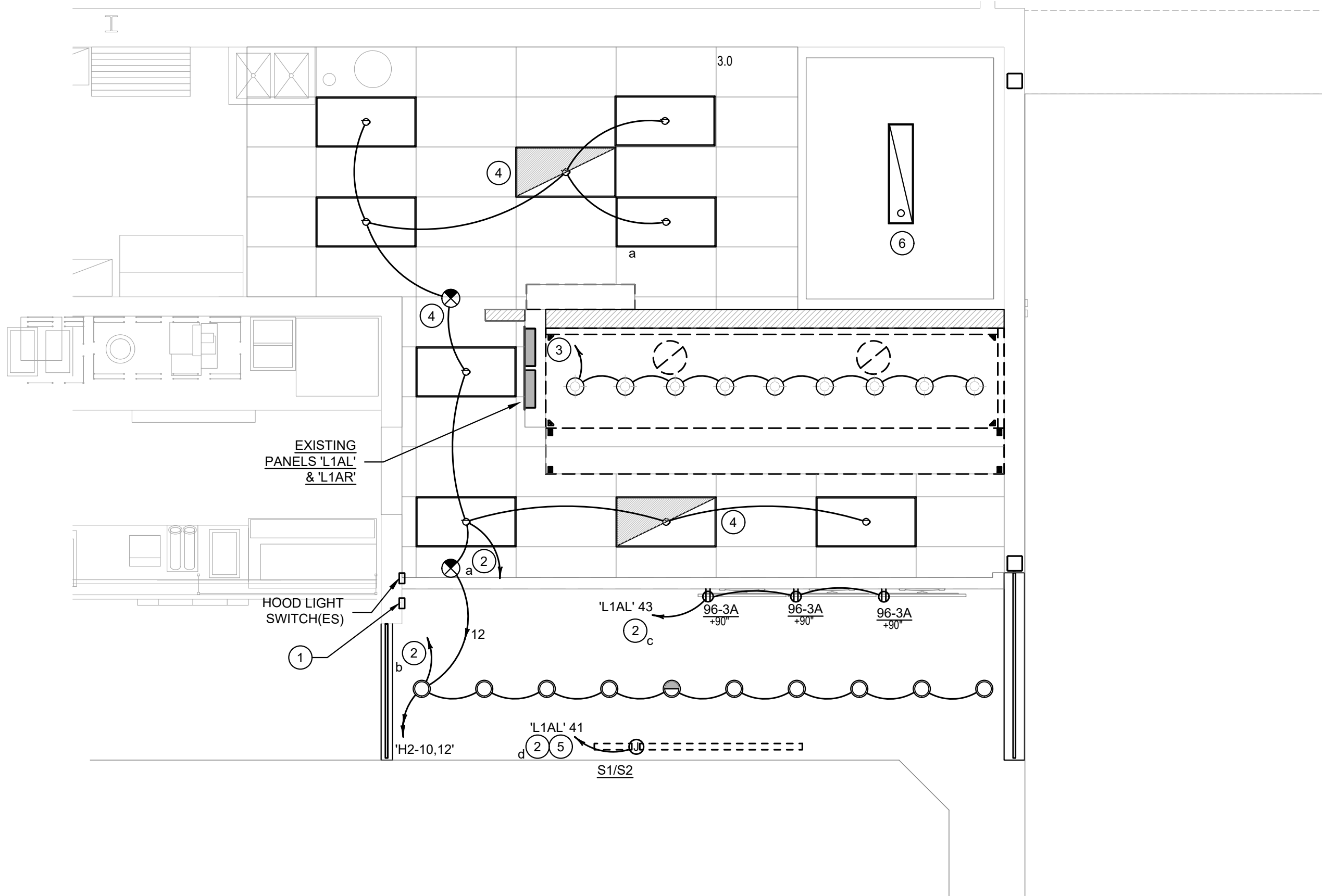


SWITCHBANK 'A' SCHEDULE				
TAG	SWITCH TYPE	AREA SERVED / SWITCH LABEL	CIRCUIT	LOAD
a	TOGGLE SWITCH	BACK-OF-HOUSE	'H2' 12	500 VA
b	TOGGLE SWITCH	SERVING LINE SOFFIT	'H2' 10	163 VA
c	TOGGLE SWITCH	MENU, LED ACCENTS	'L1AL' 43	900 VA
d	TOGGLE SWITCH	STORE SIGN	'L1AL' 41	1,200 VA

- SWITCHBANK 'A'. REFER TO SCHEDULE THIS SHEET (4/ E-101).
- ROUTE HOMERUN THROUGH LIGHTING SWITCHBANK 'A' (SWITCHES AS NOTED IN LOWER CASE). REFER TO SCHEDULE (4/E-101) FOR MORE INFORMATION.
- ROUTE THROUGH CONTACTS IN HOOD CONTROL PANEL 'M4' FOR CIRCUIT POWER. REFER TO DETAILS, SHEETS 8 / E-400.
- PROVIDE SEPARATE UN-SWITCHED HOT CONDUCTOR TO NIGHT LIGHT 'NL' FIXTURES AND EMERGENCY FIXTURES. CONNECT TO EXISTING EMERGENCY LIGHTING CIRCUIT SERVING THIS AREA.
- J-BOX FOR SIGNAGE. COORDINATE LOCATION WITH ARCHITECT / OWNER / SIGN PACKAGE. SIGN DISCONNECT PROVIDED BY SIGN CONTRACTOR.
- WALK-IN LIGHTING FURNISHED w/ EQUIPMENT, EXISTING TO REMAIN.

- CONTRACTOR SHALL PROVIDE ALL REQUIRED HARDWARE, BRACKETS, ETC. FOR A COMPLETE INSTALLATION.
- ALL LIGHTING FIXTURES SHALL BE SUPPORTED PER N.E.C. 410-16(C). SEE DETAIL, SHEET 1 / E-4.00.
- CONTRACTOR SHALL INSTALL ALL LIGHTING FIXTURES INCLUDING OWNER-FURNISHED FIXTURES.
- ALL FIXTURE BALLASTS/DRIVERS SHALL BE U.L. LISTED.
- WHEN WORKING IN JURISDICTIONS WHICH HAVE ADOPTED THE 2008 NEC OR LATER, ALL MULTI-WIRE BRANCH CIRCUITS TO HAVE SEPARATE NEUTRALS TO MEET THE REQUIREMENTS OF 2008 NEC 210.4(B).
- ALL CIRCUITRY SHOWN WITHOUT TICKS SHALL HAVE (2) WIRES PLUS EQUIPMENT GROUNDING CONDUCTOR.
- 'NL' DESIGNATION INDICATES NIGHT LIGHT ON UN-SWITCHED CIRCUIT.

LIGHTING SWITCHBANK SCHEDULE		4	#	LIGHTING KEYED NOTES		3	LIGHTING GENERAL NOTES		2
	NOT TO SCALE	E-101		NOT TO SCALE	E-101		NOT TO SCALE	E-101	



LIGHTING FLOOR PLAN 1
Scale: 1/4"=1'-0" E-101



PANDA RESTAURANT GROUP INC.
1683 Walnut Grove Ave.
Rosemead, California
91770
Telephone: 626.799.9898
Facsimile: 626.372.8288

All ideas, designs, arrangement and plans indicated or represented by this drawing are the property of Panda Express Inc. and were created for use on this specific project. None of these ideas, designs, arrangements or plans may be used by or disclosed to any person, firm, or corporation without the written permission of Panda Express Inc.

REVISIONS:

ISSUE DATE:

1	35% SUBMITTAL	05/23/2022
2	95% SUBMITTAL	09/16/2022

DRAWN BY: JMJ

PANDA PROJECT #:
ARCH PROJECT #:



MARSHALL & BOLLWERK
ENGINEERING, INC.
3380 Trickum Rd.
Building 500, Suite 104
Woodstock, Ga. 30188
p: (678) 785-0333
e: mbe@mbenc.net



PANDA EXPRESS
BLDG 6914, WARREN RD.
EXCHANGE FOOD COURT
FT RILEY, KS 66442

E-101

LIGHTING FLOOR PLAN

BID SET | 10/18/2022 | NOT FOR CONSTRUCTION