

RECORD INFORMATION:

(R1) PMB 4/8
(R2) 0861/113 O.R.
(R3) MB 10/10

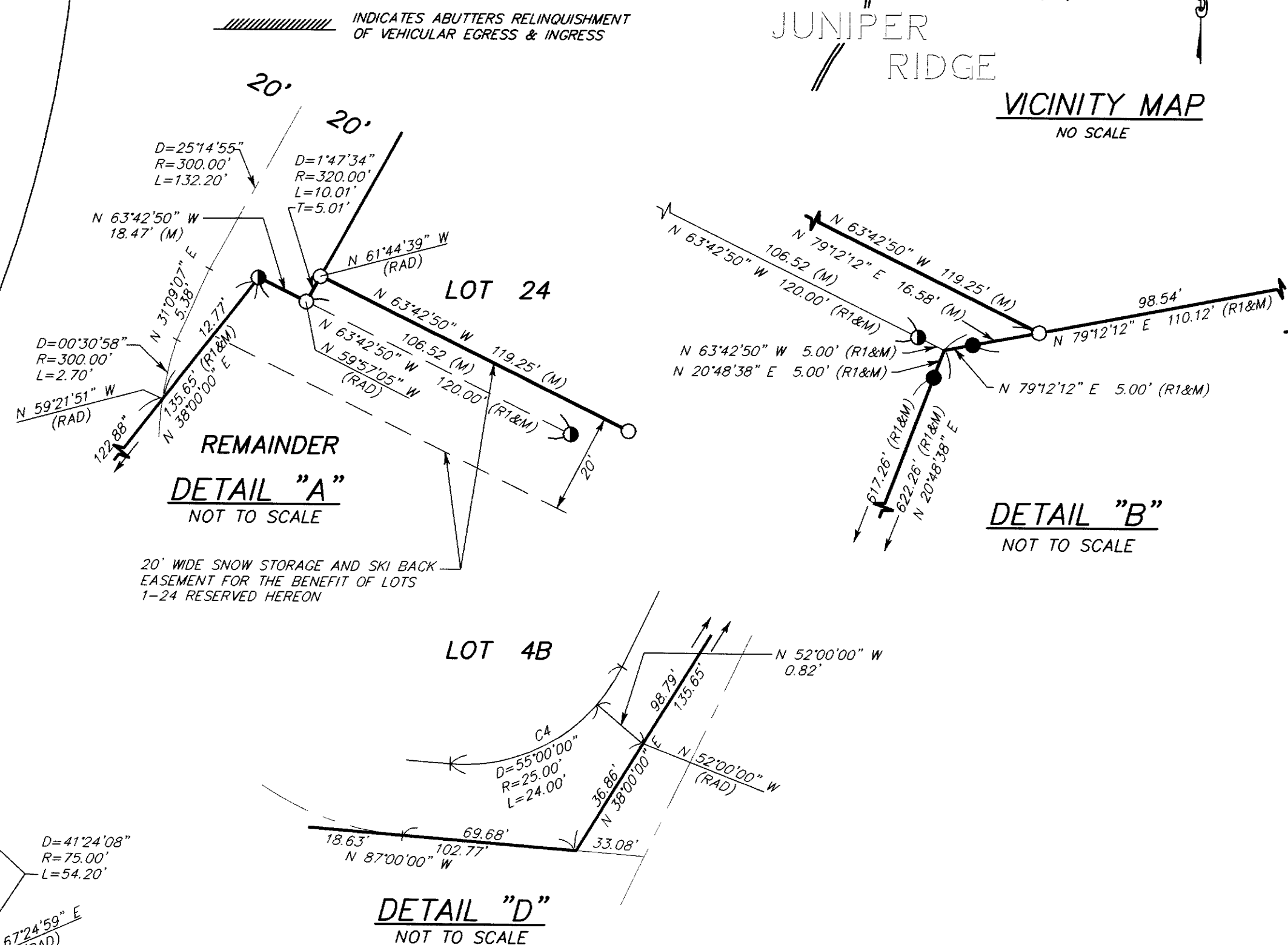
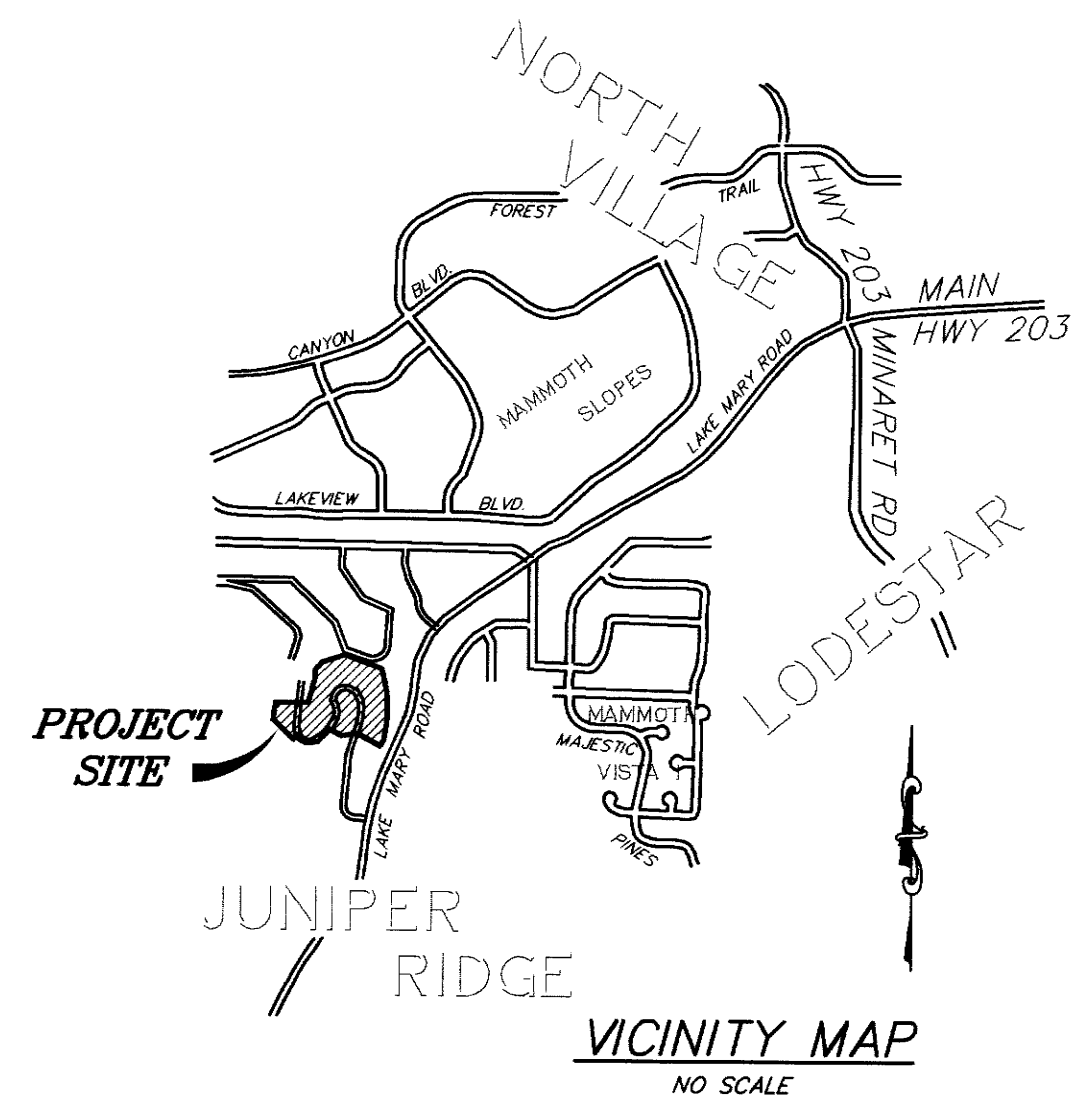
BASIS OF BEARINGS:

THE BASIS OF BEARINGS FOR THIS MAP IS THE NORTH LINE OF PARCEL 2 OF PARCEL MAP No. 36-128 SHOWN HEREON AS N 89°38'03" W AS SHOWN ON PMB 4/8.

LEGEND:

(R) RECORD
(M) MEASURED

- SET REBAR & CAP STAMPED "LS 4587".
- FOUND 2" I.P. TAGGED L.S. 4587 PER R1.
- FOUND 2" I.P. TAGGED L.S. 4587 PER MB 9/62.
- ▲ FOUND 6"x6" CONC. STATE HIGHWAY MONUMENT W/
BRASS NAIL SET PER STATE R/W MAP IX-MNO-112
-A, AND FOUND PER R1.



GREYHAWK - A PLANNED UNIT DEVELOPMENT
TRACT MAP AMENDING
TRACT NO. 36-189
IN THE TOWN OF MAMMOTH LAKES,
MONO COUNTY, CALIFORNIA

BEING A RESUBDIVISION OF MAP FILED IN BOOK 10 OF TRACT MAPS
AT PAGES 57 THRU 57C, ON MARCH 22, 2001, IN THE OFFICE OF THE
COUNTY RECORDER, MONO COUNTY, STATE OF CALIFORNIA.

GROSS AREA = 9.77 AC.
NET AREA = 8.42 AC.