

Patio Furniture

Item Code	Type	Description	Vendor	Size		
OC4	OUTDOOR CHAIR	OUTDOOR ALUMINUM CHAIR	PANDA VENDOR	18"H		
OT6	ADA PATIO TABLE	33X48 ADA PATIO TABLE WITH ALUMINUM SLATS	PANDA VENDOR	48"L X 33 1/4"W X 30"H		
OT7	4 TOP PATIO TABLE	24X48 PATIO TABLE WITH ALUMINUM SLATS	PANDA VENDOR	48"L X 24"W X 30"H		
OT8	2 TOP PATIO TABLE	24X27 PATIO TABLE WITH ALUMINUM SLATS				
OW3	OUTDOOR WASTEBIN	OUTDOOR WASTE BIN WITH ALUMINUM SLATS	PANDA VENDOR	22.5"L X 22.5"W X 45"H		

- 1

TRASH ENCLOSURE BY LANDLORD
- 2

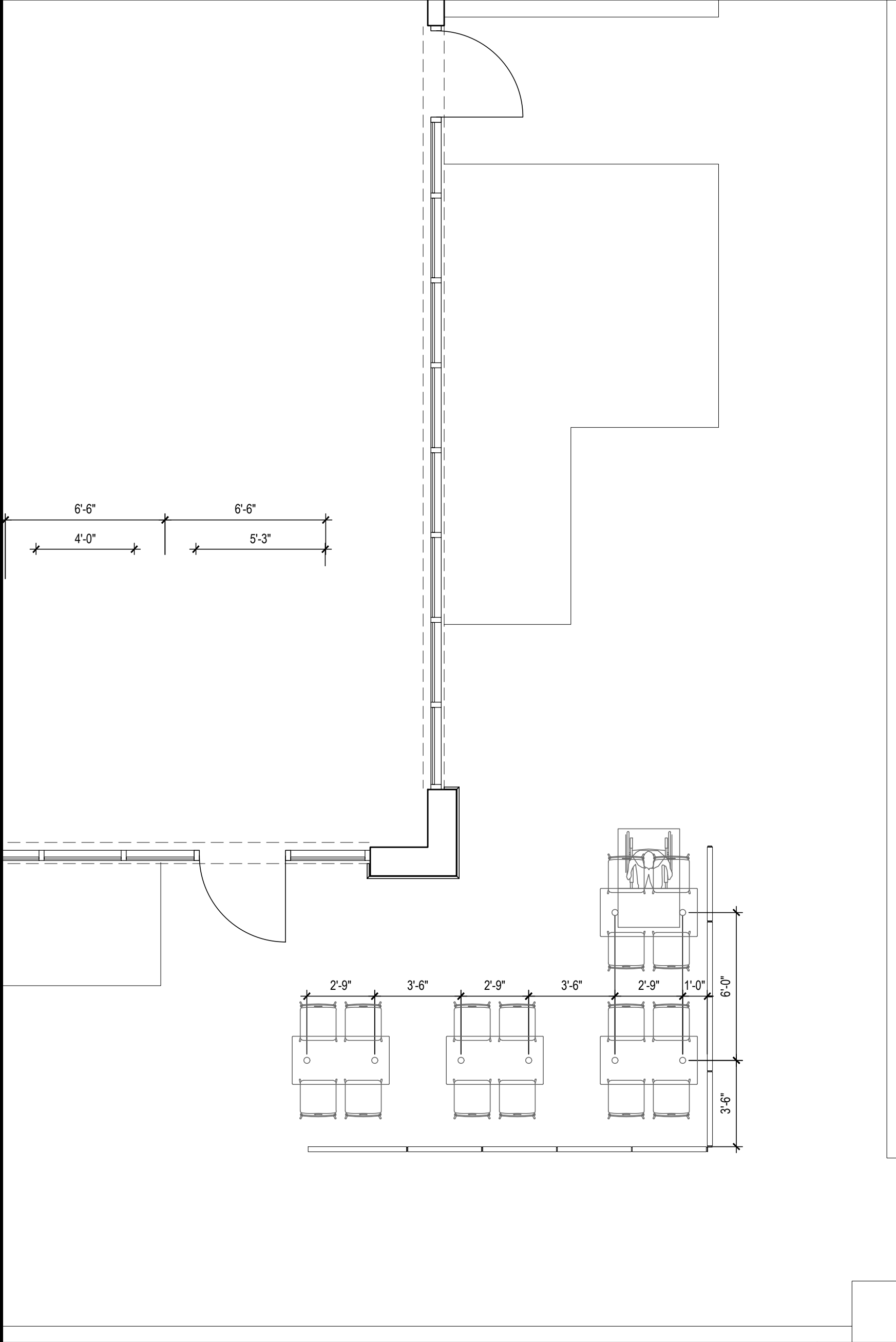
ACCESSIBLE PATH OF TRAVEL    - - - - ->
- 3

UNDERGROUND GREASE INTERCEPTOR - SEE LANDLORD CIVIL DRAWINGS
- 4

OUTDOOR SEATING AREA, RAILING BY LANDLORD

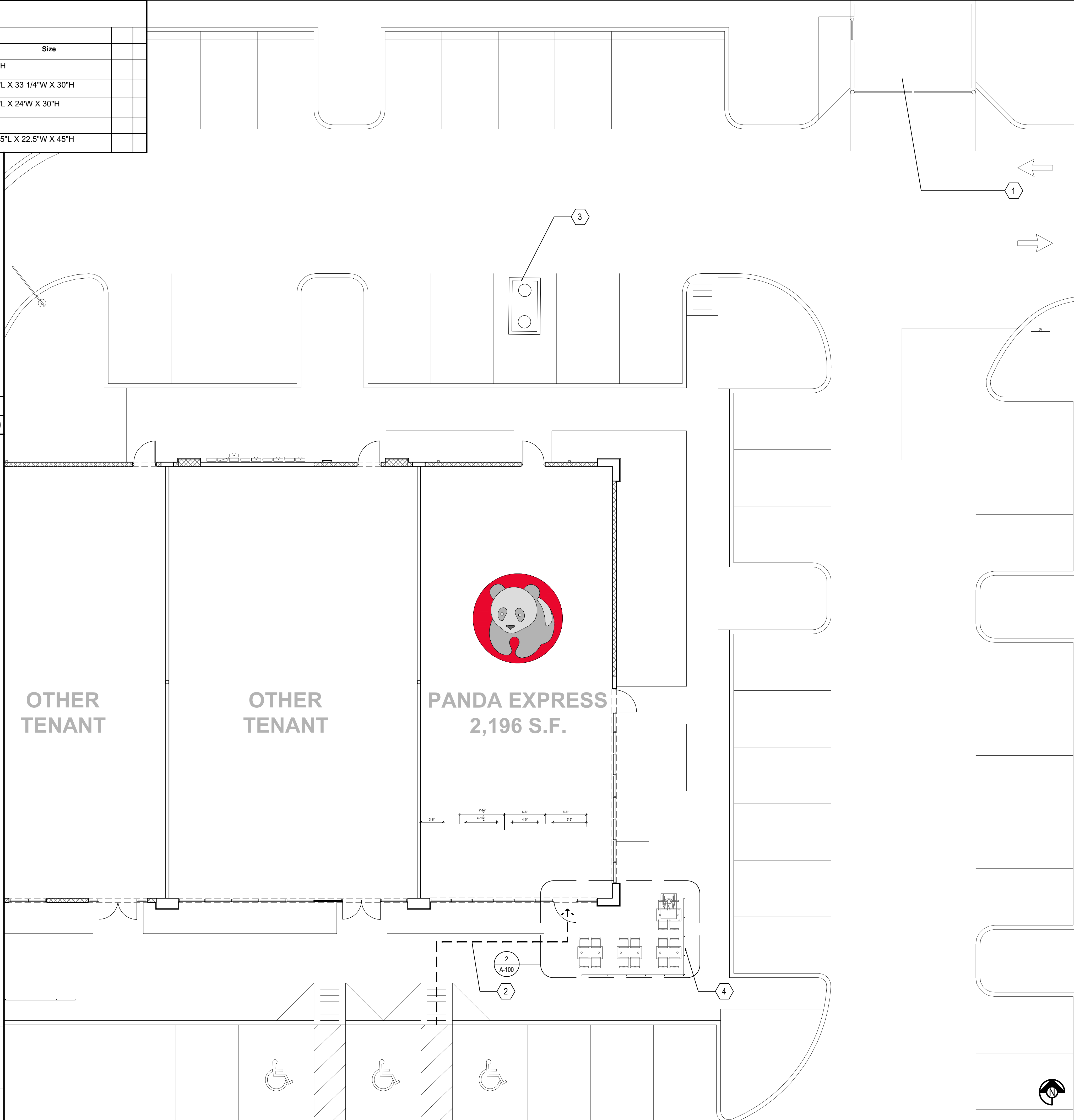
KEY NOTES AND SCHEDULE    A

Scale= NTS    A-100



PATIO FURNITURE    2

Scale= 1/4" = 1'-0"    A-100



SITE PLAN    1

Scale= 1/8" = 1'-0"    A-100



PANDA EXPRESS, INC.  
1683 Walnut Grove Ave.  
Rosemead, California  
91770  
Telephone: 626.799.9898  
Facsimile: 626.372.8288

All ideas, designs, arrangement and plans indicated or represented by this drawing are the property of Panda Express Inc. and were created for use on this specific project. None of these ideas, designs, arrangements or plans may be used by or disclosed to any person, firm, or corporation without the written permission of Panda Express Inc.

REVISIONS:


ISSUE DATE:

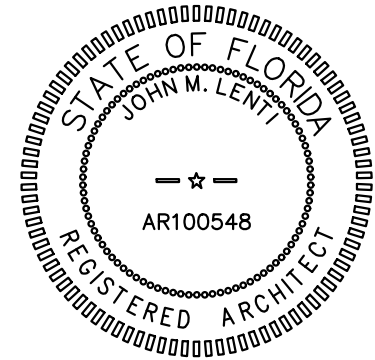
1	BID SET	2023-05-02

DRAWN BY:

PANDA PROJECT #: S4-24-D22020  
ARCH PROJECT #: P7377

www.cphcorp.com  
A Full Service  
A & E Firm

Plans Prepared By  
**CPL, LLC**  
500 West Fulton St.  
Sanford, FL 32771  
Ph: 407.322.6841  
Licenses:  
Eng. C.O.A. No. 3215  
Survey L.B. No. 7143  
Arch. Lic. No. AA2600926  
Lndscp. Lic. No. LC0000298



PANDA EXPRESS  
PANDA END CAP  
3301 W HILLSBORO BLVD  
DEERFIELD BEACH, FL 33442

A-100

SITE PLAN  
ARCHITECTURAL