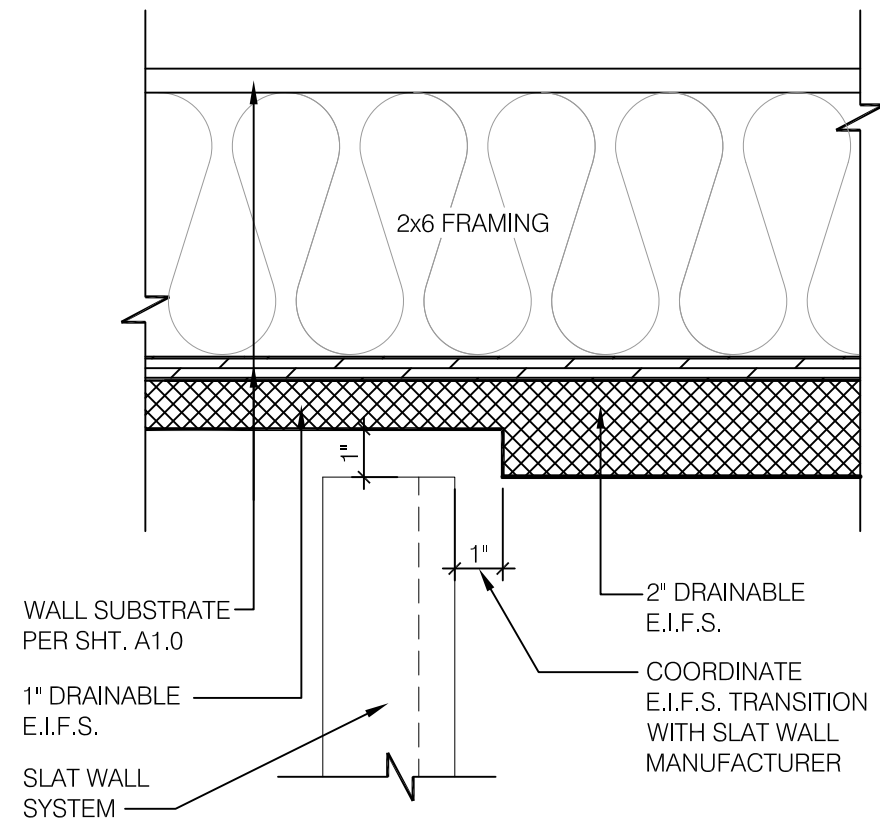


NOTES

- 1 2X WOOD STUDS
- 2 PLYWOOD SUBSTRATE FOR EXTERIOR WALLS
- 3 FLASHING TAPE AT ALL VERTICAL PARAPET TRANSITIONS. EXTEND TAPE 12" OUTWARD AND UPWARD FROM CORNER AS SHOWN. LAP CORNERS WITH ANGLED TAPE AS SHOWN TO INSURE FULL COVERAGE AT CORNERS
- 4 DOUBLE 2X TOP PLATE.
- 5 PAINTED 24 GAUGE PARAPET COPING. SLOPE 1/4:1 TOWARDS ROOF WITH FIBER CANT STRIPS UNDER COPING. LAP FRONT AND BACK EDGE 2" DOWN VERTICAL FACE. LAP EXPOSED COPING EDGE EXPOSED ENDS AT VERTICAL PARAPET TRANSITION.
- 6 WRAP 1" THICK EIFS ONTO VERTICAL FACE OF PARAPET TRANSITION
- 7 EIFS FINISH ON OUTER SURFACE OF EXTERIOR WALL. THICKNESS PER THE EXTERIOR ELEVATIONS ON SHEET A4.0
- 8 TERMINATION BAR AT VERTICAL TRANSITION OF EIFS AND MEMBRANE ROOFING. SEAL VERTICAL GAP BETWEEN TERMINATION BAR AND EIFS PER ROOFING MANUFACTURER SPECIFICATIONS.
- 9 PVC ROOFING MEMBRANE ON BACKSIDE OF PARAPET.

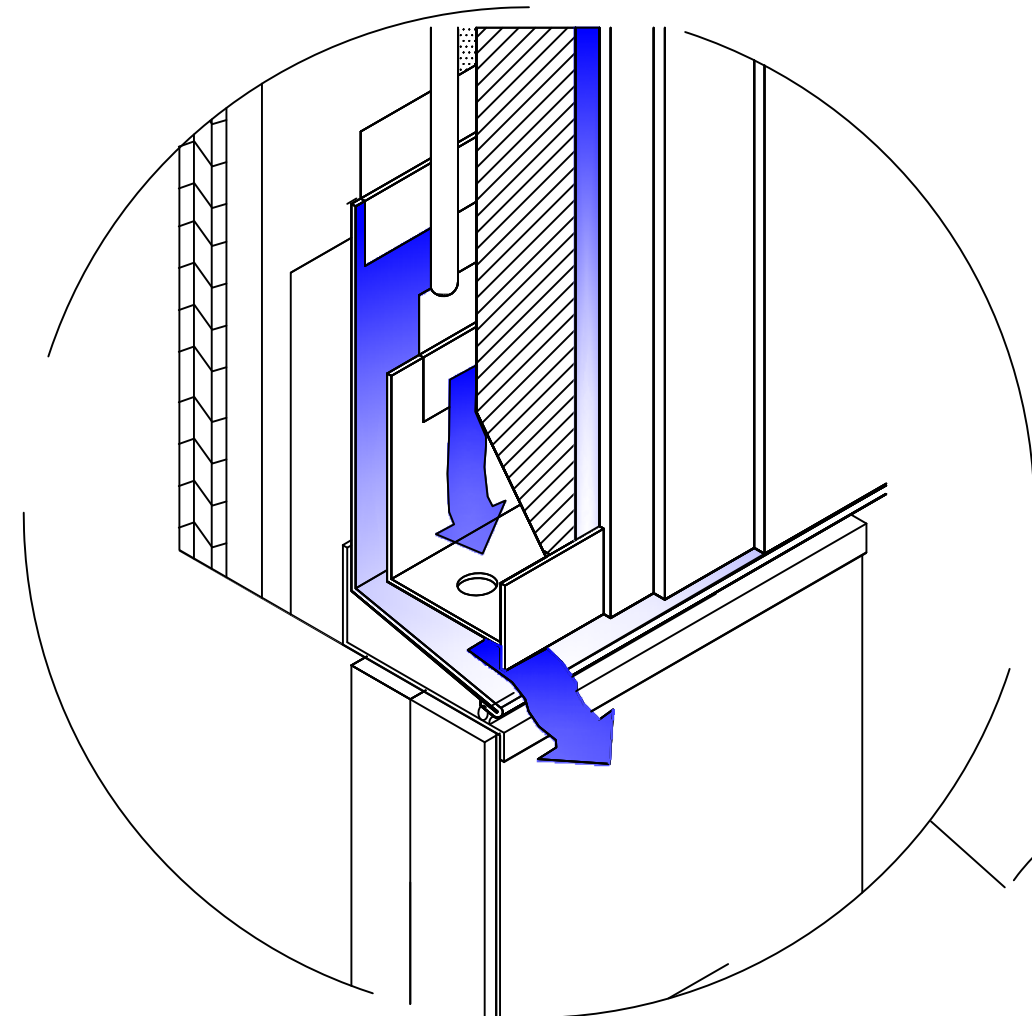
IMPORTANT: ONLY FASTEN PARAPET COPING ALONG THE FRONT AND BACK VERTICAL EDGE. NEVER ON TOP OF COPING.

PARAPET CAP & TRANSITION N.T.S. 14



E.I.F.S. TRANSITION @ SLAT WALL 3'-1'-0" 19

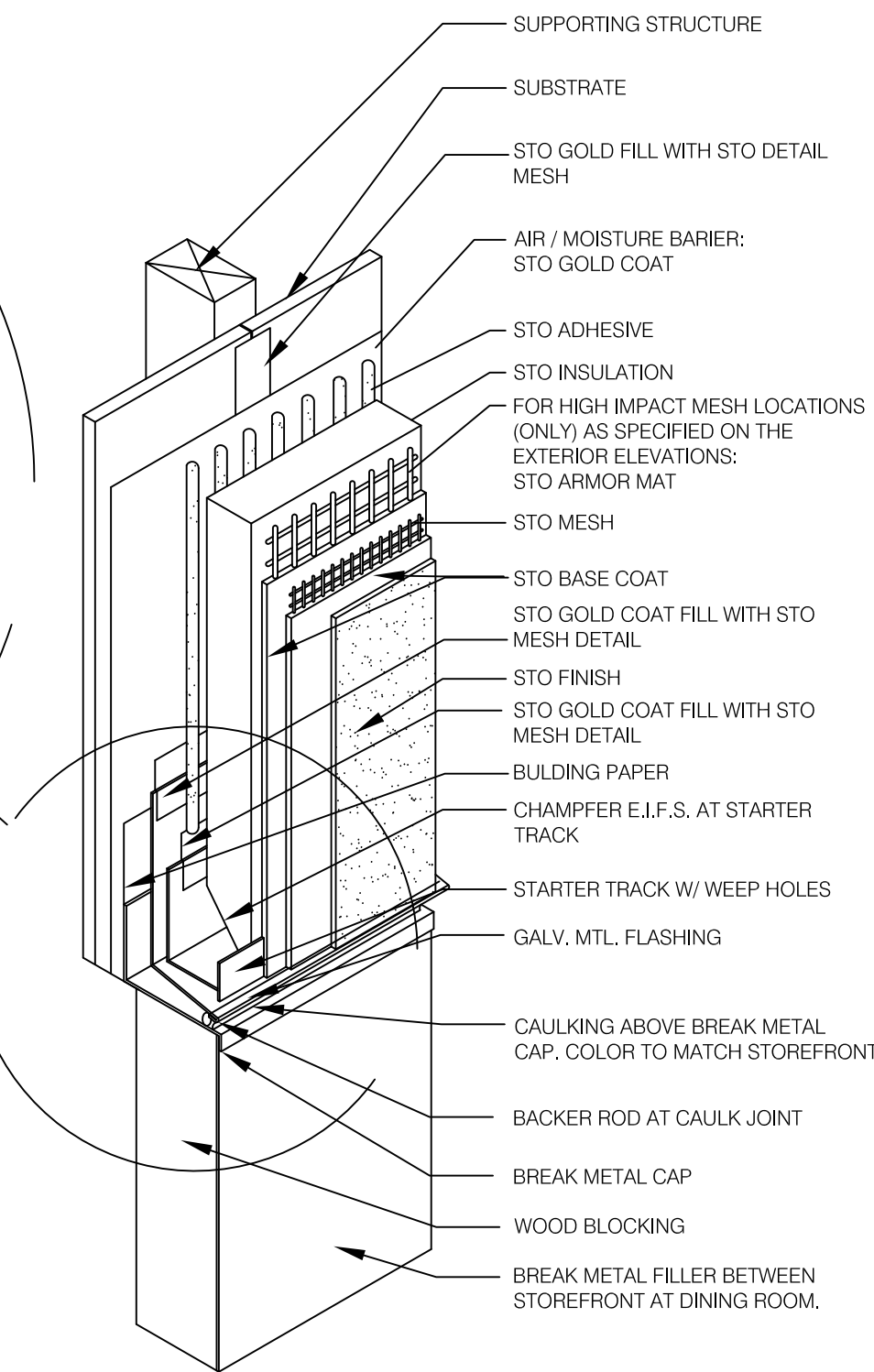
NOT USED 1'-1'-0" 20



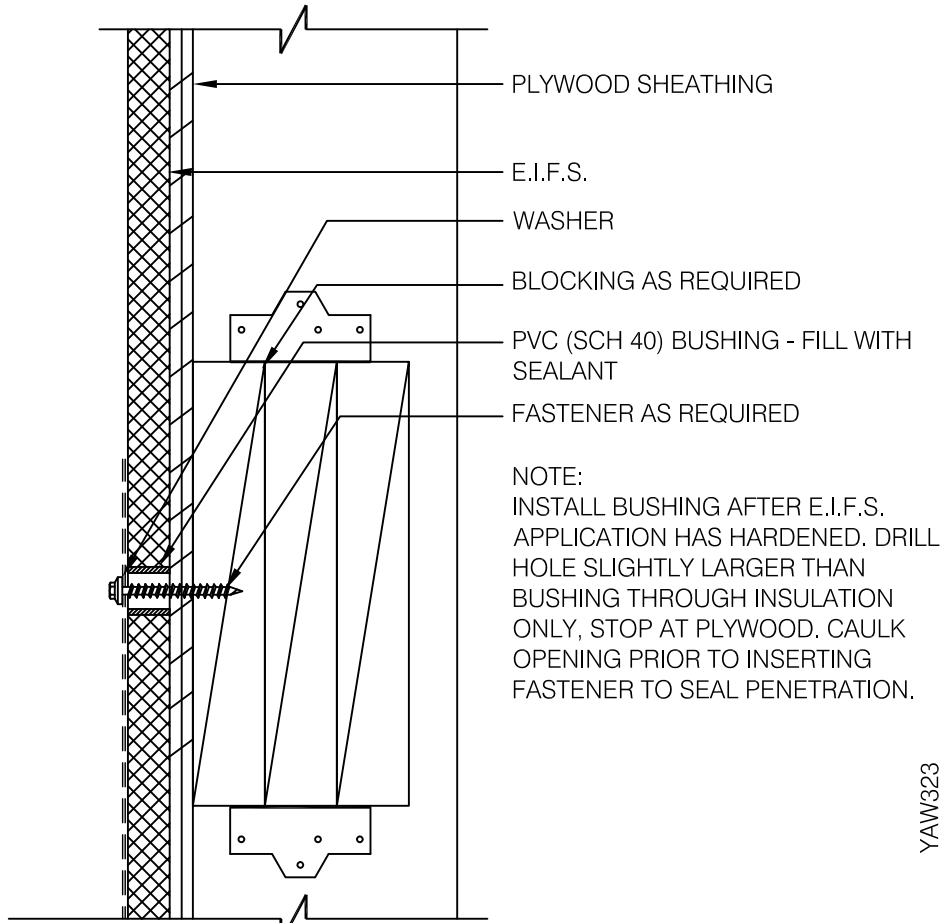
NOT AN OPTION: Do not caulk below EIFS starter track edge & galv. mtl. flashing to allow for drainage behind EIFS.

NOTE: EIFS DETAILS ARE INTENDED TO BE GENERIC. MANUFACTURER'S DETAILS AND RECOMMENDATIONS SHOULD BE FOLLOWED. REFER TO SECTION 07240 OF THE SPECIFICATIONS MANUAL.

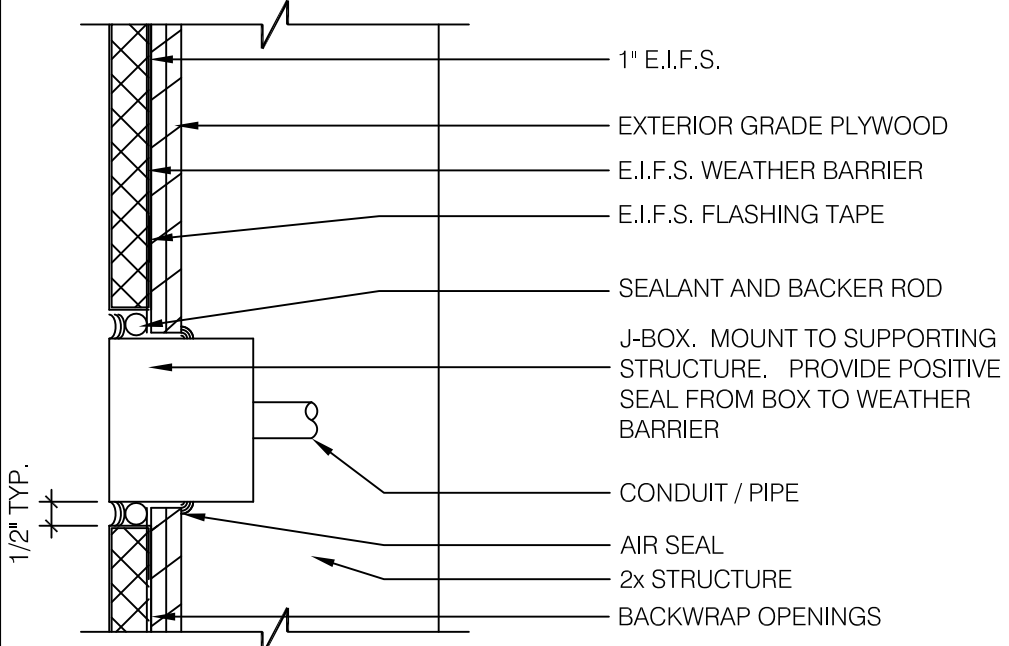
E.I.F.S FLASHING AT TOP OF BREAK METAL 12



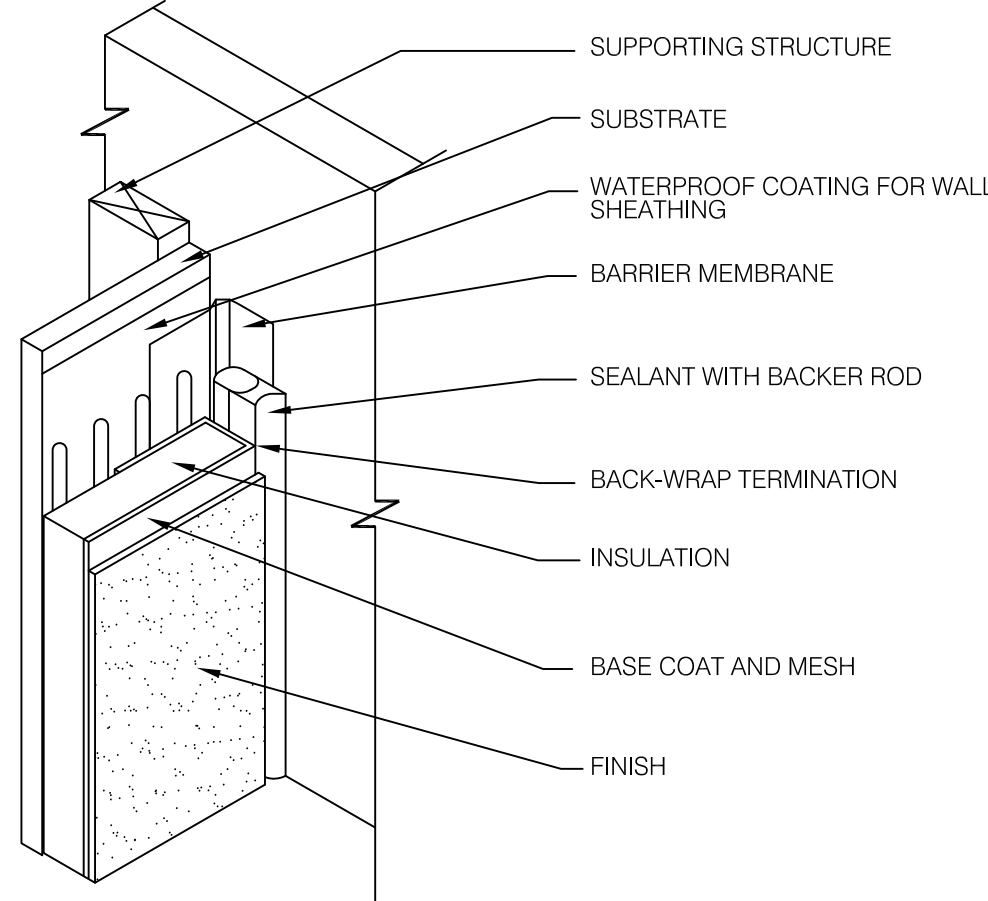
CONNECTION THRU EIFS 3'-1'-0" 9



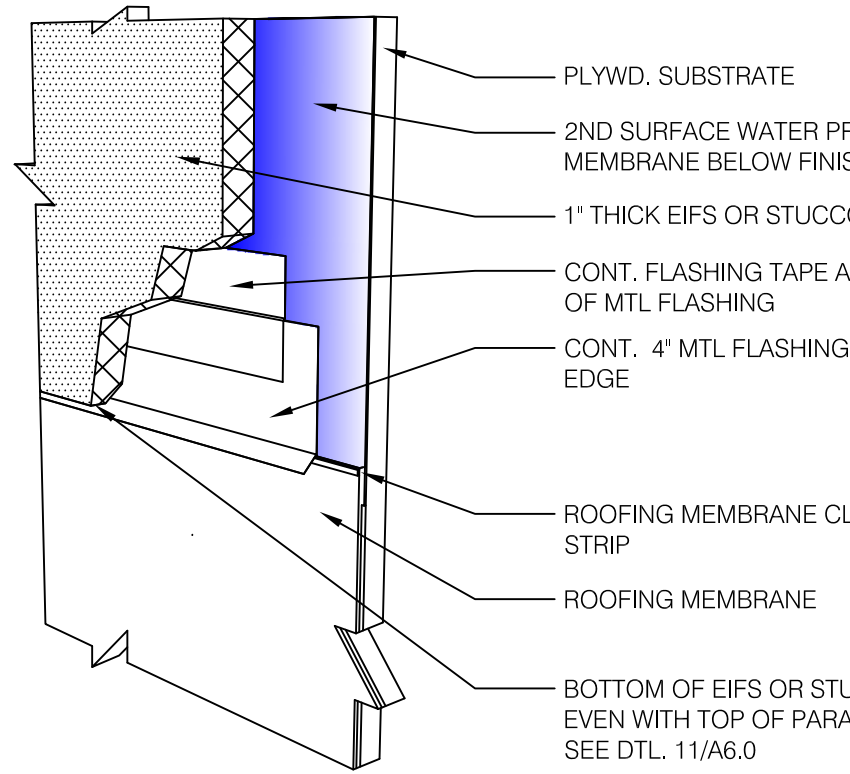
NOT USED N.T.S. 10



CO2 FILL / J-BOX IN EIFS 3'-1'-0" 5

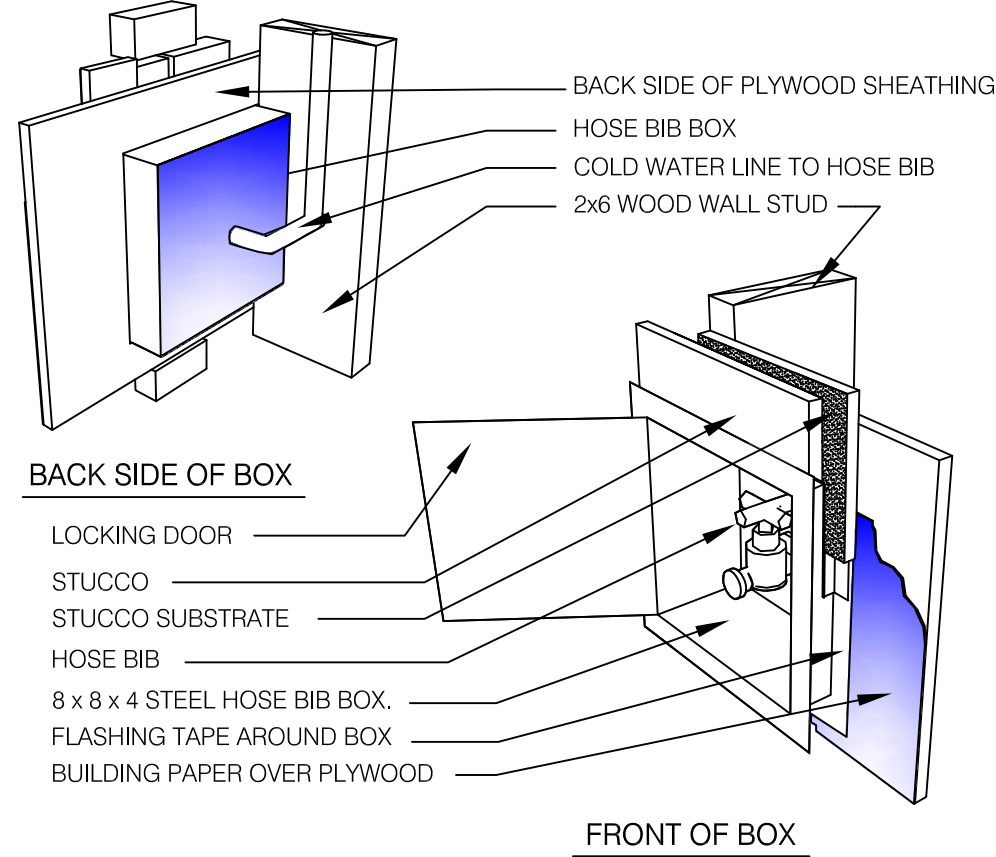


TYP. E.I.F.S. @ INSIDE CORNER N.T.S. 6

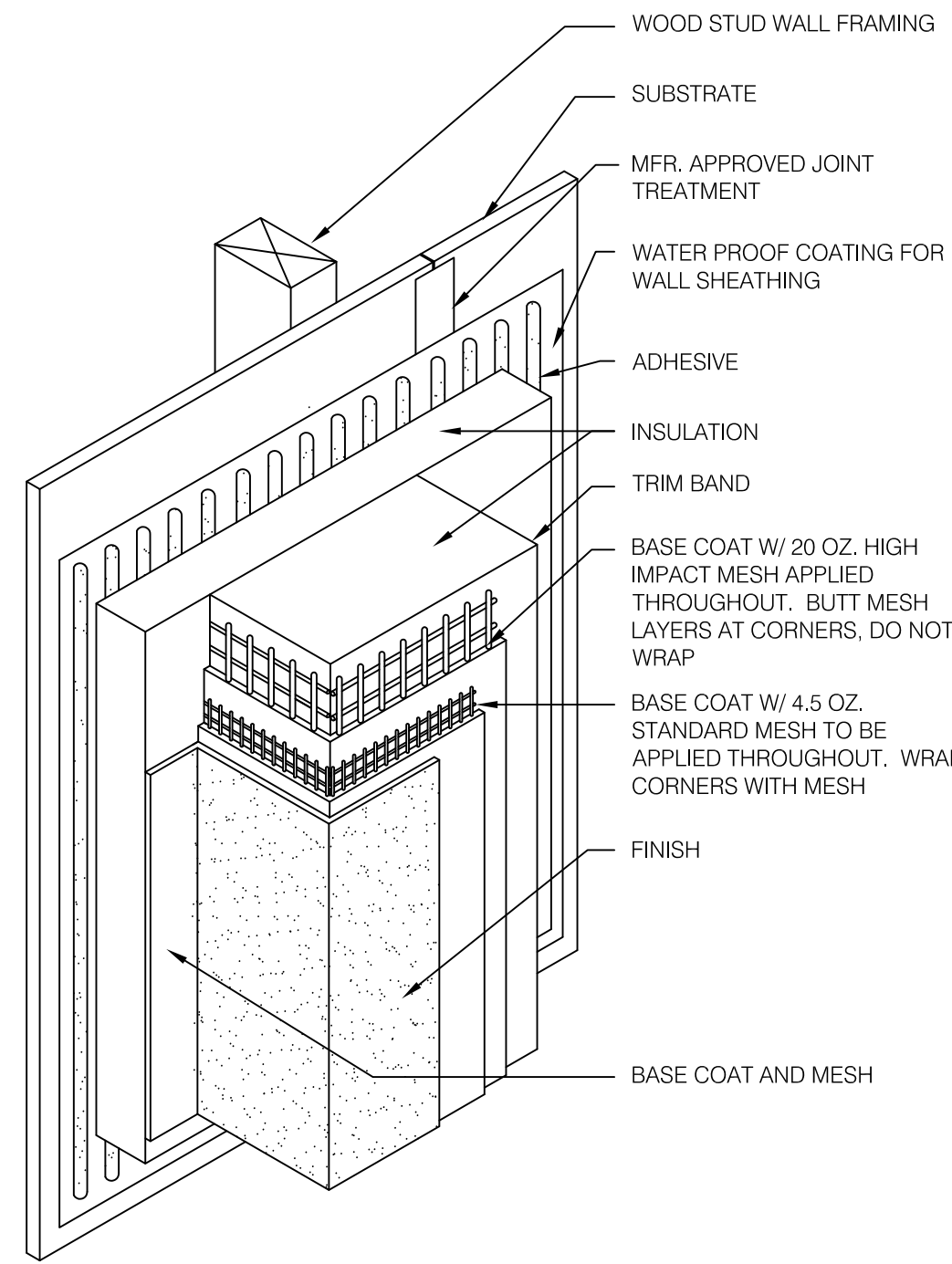


E.I.F.S. TO BASE FLASHING N.T.S. 7

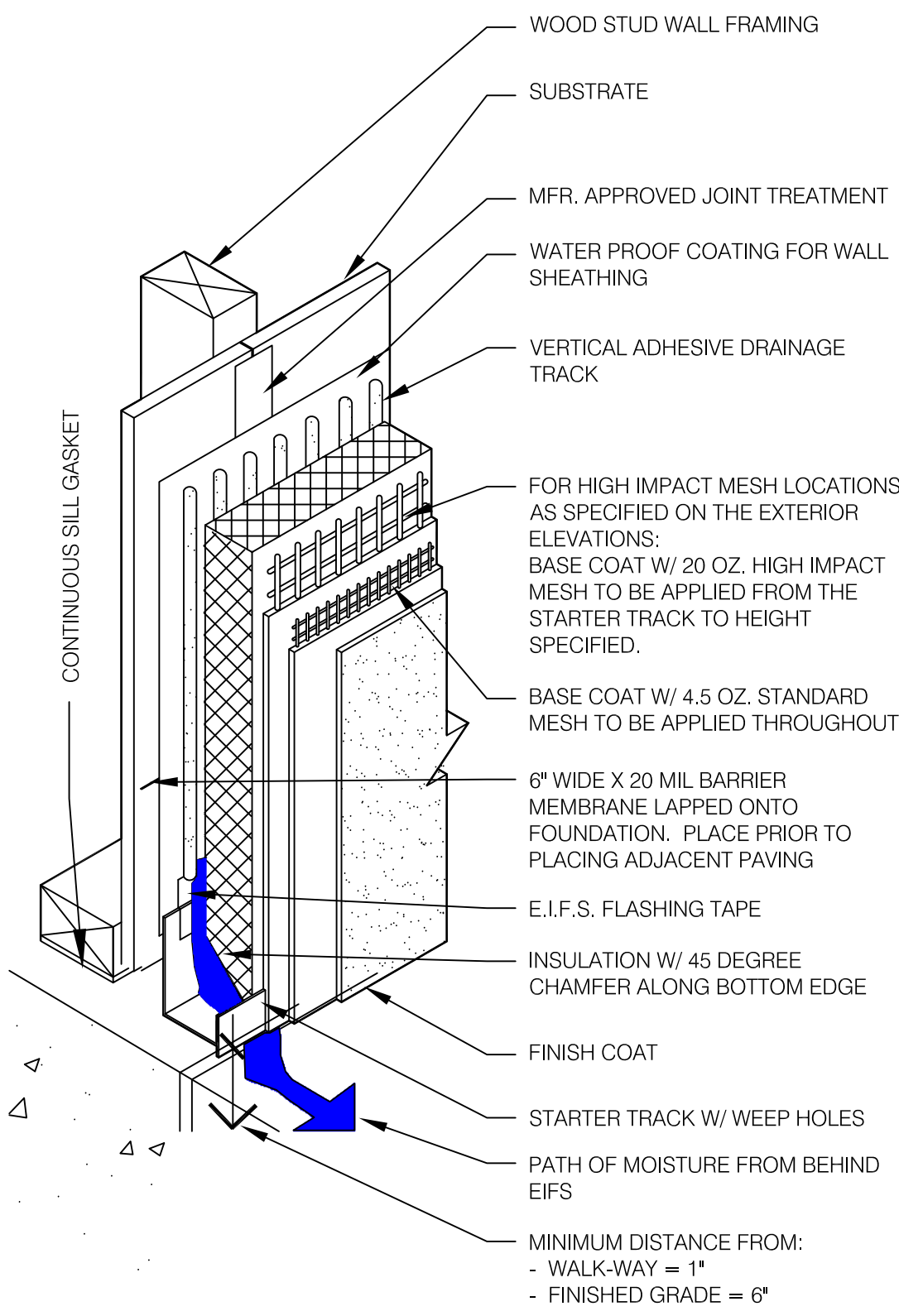
NOTE: HOSE BIB BOX SHALL BE ACUDOR-ARVB OR EQUAL



HOSE BIB BOX N.T.S. 8



TYP. E.I.F.S. TRIM HIGH-IMPACT N.T.S. 2



TYP. E.I.F.S. BASE TERMINATION N.T.S. 4



architecture studio

1232 washington ave.
suite 310
st. louis, mo 63103
p: 314.241.6262
f: 314.241.6263
www.m2astudio.com



Mark J. Gettemeyer, Architect

PERMIT/CONSTRUCTION SET

DATE: MAY 19, 2017

△	
△	
△	
△	
△	
△	
△	
△	
△	

CONTRACT DATE: XX.XX.XX
BUILDING TYPE: EXPLORER LITE 40
PLAN VERSION: DECEMBER 2016
SITE NUMBER: XXX-XXX
STORE NUMBER: XXXXX

TACO BELL

North Carolina Highway 24
Warsaw, NC. 28398



EXPLORER LITE

MEDIUM 40

**CONST.
DETAILS
WALL**

A6.2

PLOT DATE: