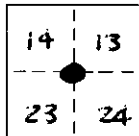


CORNER RECORD

COUNTY OF TYHO MONO T. 9N R. 22E MERIDIAN CALIFORNIA

CORNER TYPE: GOV'T. CORNER ☒ MEANDER ☐ RANCHO ☐ CONTROL ☐ OTHER ☐

CORNER IDENTIFICATION - DATE OF VISIT 21 AUG 19 75



Observed and photographed by M Allstead

Section Corner

CORNER - LEFT AS FOUND ☒ FOUND AND TAGGED ☐ REESTABLISHED OBLITERATED CORNER ☐ REBUILT ☐

PHYSICAL DESCRIPTION OF CORNER FOUND: EVIDENCE AND METHOD USED TO IDENTIFY OR REESTABLISH

Roll #3 Frame #3 - Close up of GLO Cap with lettering facing North

Roll #3 Frame #4 - From 15± ft West of corner, looking East along fence line down to Hwy 395

PHYSICAL DESCRIPTION OF MONUMENTS REBUILT OR PERPETUATED

U.S. GLO. BRASS CAP 0.84
ABOVE GROUND E 0.5'± N OF E-W FENCE LINE. ALSO FENCE
COMING FROM S' stops @ E-W FENCE LINE. CORNER IS
LOCATED 200± YDS. W OF RTE. 395.

CALIFORNIA COORDINATE SYSTEM ORDER: FIRST ☐ SECOND ☐ THIRD ☐

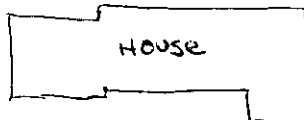
STATIONS USED: NGS (USC & GS) ☐ STATE ☐ COUNTY ☐ OTHER ☐ STATION _____ STATION _____

ZONE _____ ELEVATION _____ NORTHINGS (Y) _____ EASTINGS (X) _____

SKETCH: (Include reference tie or witness points, remarks and topo of area)

Hwy 395 200± yds
East of corner

← N →



□ shed 200± ft SE of corner

USGLO CAP
Section Corner →

8x8" Fence corner post

SURVEYOR'S CERTIFICATE

THIS CORNER RECORD WAS PREPARED BY ME OR UNDER MY DIRECTION IN CONFORMANCE WITH THE LAND SURVEYORS ACT ON 8-21-75 7-25 1978

SIGNED: Paul C. Hunsper

L.S. OF REC. NO. 4468

SEAL

COUNTY SURVEYOR'S CERTIFICATE

THIS CORNER RECORD WAS RECEIVED _____ 19 _____ AND EXAMINED AND FILED _____ 19 _____

BY: _____

TITLE: _____

DOCUMENT No. 9152-13-4

STATEMENT ON BACK OF SHEET

YES ☐ NO ☐