

RECORD OF SURVEY N^o 32-42

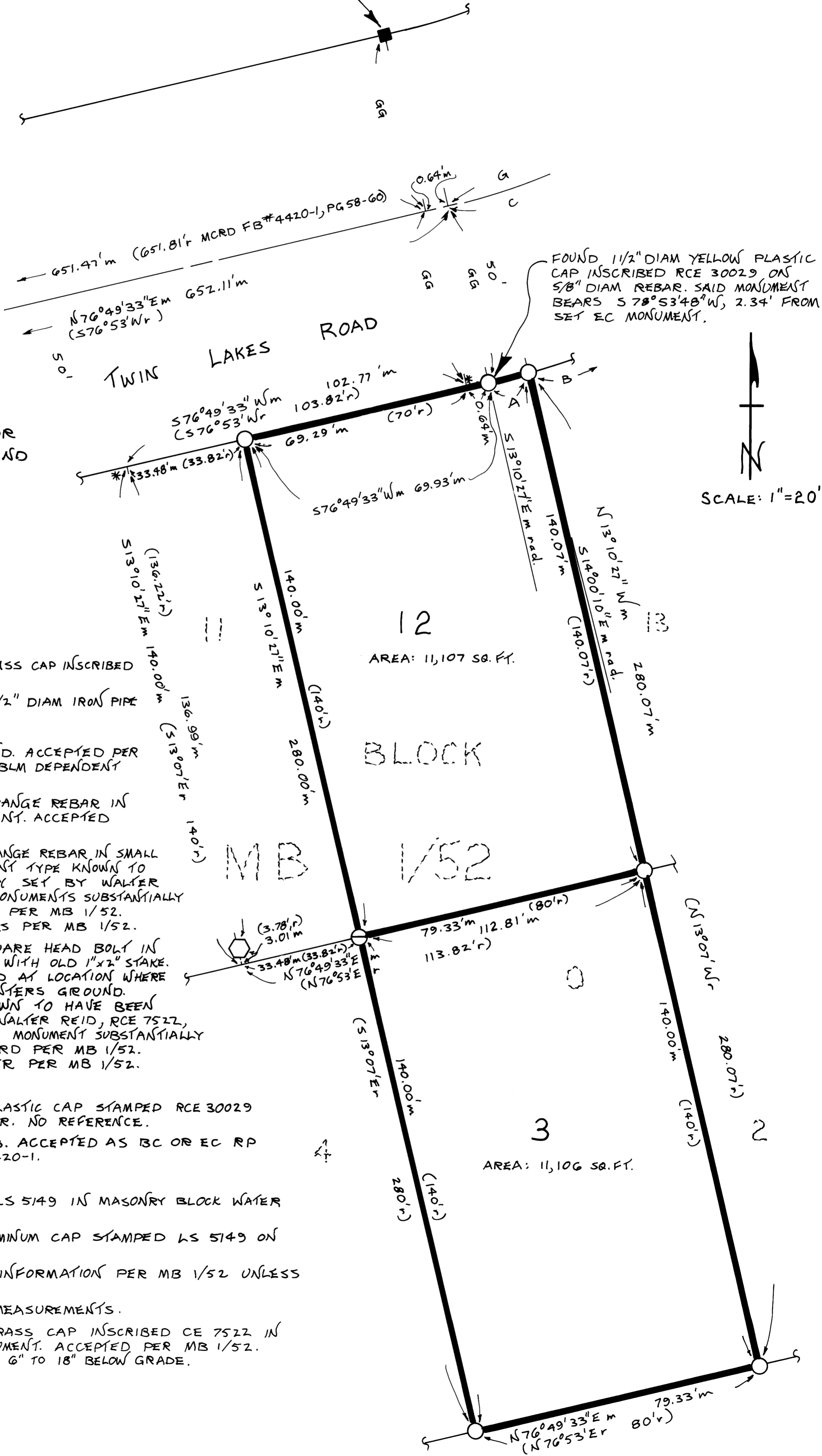
LOTS 3 & 12, BLOCK 0, TWIN LAKES SUBDIVISION, NORTH PORTION,
MB 1/52, BEING A PORTION OF LOT 3, SEC 32, T4N, R24E, AND
TRACT 37, SEC 5, T3N, R24E, MDB#M, MONO COUNTY, CALIFORNIA.

FND 2x2 HUBS PER MCRD
FB# 4420-1 PG. 58. HUBS BEAR
S 18° 23' 59" E, 0.76' AND
N 12° 58' 36" W, 31.38'
FROM FND CONC. MON.

SEE SHEET 1 OF 2 FOR
BASIS OF BEARINGS AND
CURVE DATA.

LEGEND:

- FOUND 3 1/4" DIAM BRASS CAP INSCRIBED
T4N R24E
1/4 532
AP 2 ON 2 1/2" DIAM IRON PIPE
TR 37
SS T3N
1977
IN SMALL ROCK MOUND. ACCEPTED PER
MB 1/52 AND 1977 BLM DEPENDENT
RESURVEY.
- FOUND 3/8" DIAM ORANGE REBAR IN
6"x6" CONC. MONUMENT. ACCEPTED
PER MB 1/52.
- FOUND 3/8" DIAM ORANGE REBAR IN SMALL
ROCK MOUND. MONUMENT TYPE KNOWN TO
HAVE BEEN COMMONLY SET BY WALTER
REID, RCE 7522. MONUMENTS SUBSTANTIALLY
CONFORM TO RECORD PER MB 1/52.
ACCEPTED AS CORNERS PER MB 1/52.
- ⊗ FOUND 1/2"x1/2" SQUARE HEAD BOLT IN
SMALL ROCK MOUND WITH OLD 1"x2" STAKE.
BOLT ENTERS GROUND AT LOCATION WHERE
POINT OF STAKE ENTERS GROUND.
TYPE OF STAKE KNOWN TO HAVE BEEN
COMMONLY SET BY WALTER REID, RCE 7522,
IN THIS SUBDIVISION. MONUMENT SUBSTANTIALLY
CONFORMS TO RECORD PER MB 1/52.
ACCEPTED AS CORNER PER MB 1/52.
- FOUND 1 1/2" DIAM PLASTIC CAP STAMPED RCE 30029
ON 5/8" DIAM REBAR. NO REFERENCE.
- ▣ FOUND OLD 2x2 HUB. ACCEPTED AS BC OR EC RP
PER MCRD FB# 4420-1.
- ⊕ SET LEAD AND TAG LS 5149 IN MASONRY BLOCK WATER
VALVE BOX.
- SET 1 1/2" DIAM ALUMINUM CAP STAMPED LS 5149 ON
5/8" DIAM REBAR.
- r BASED ON RECORD INFORMATION PER MB 1/52 UNLESS
OTHERWISE NOTED.
- m BASED ON FIELD MEASUREMENTS.
- FOUND 1 1/2" DIAM. BRASS CAP INSCRIBED CE 7522 IN
6"x6" CONCRETE MONUMENT. ACCEPTED PER MB 1/52.
FOUND MONUMENTS ARE 6" TO 18" BELOW GRADE.



P.S. Vol 2, Page 131-A