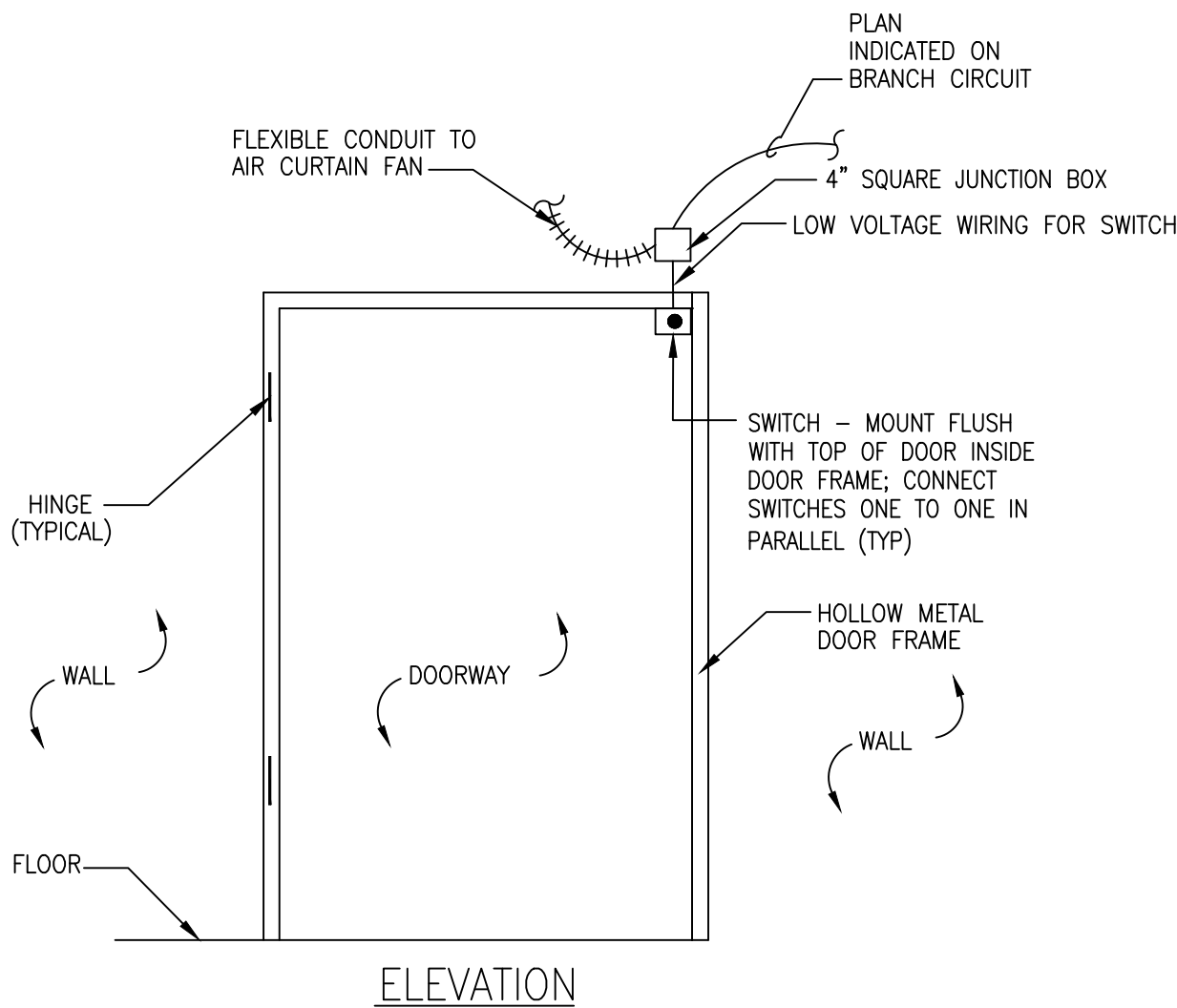
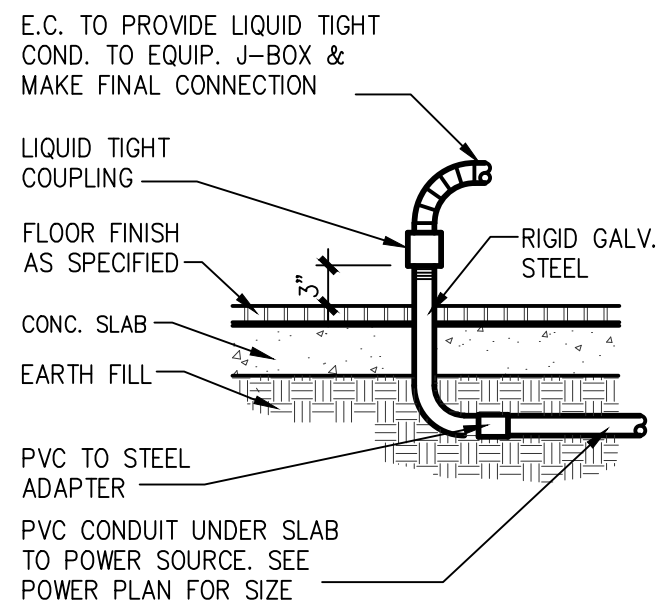
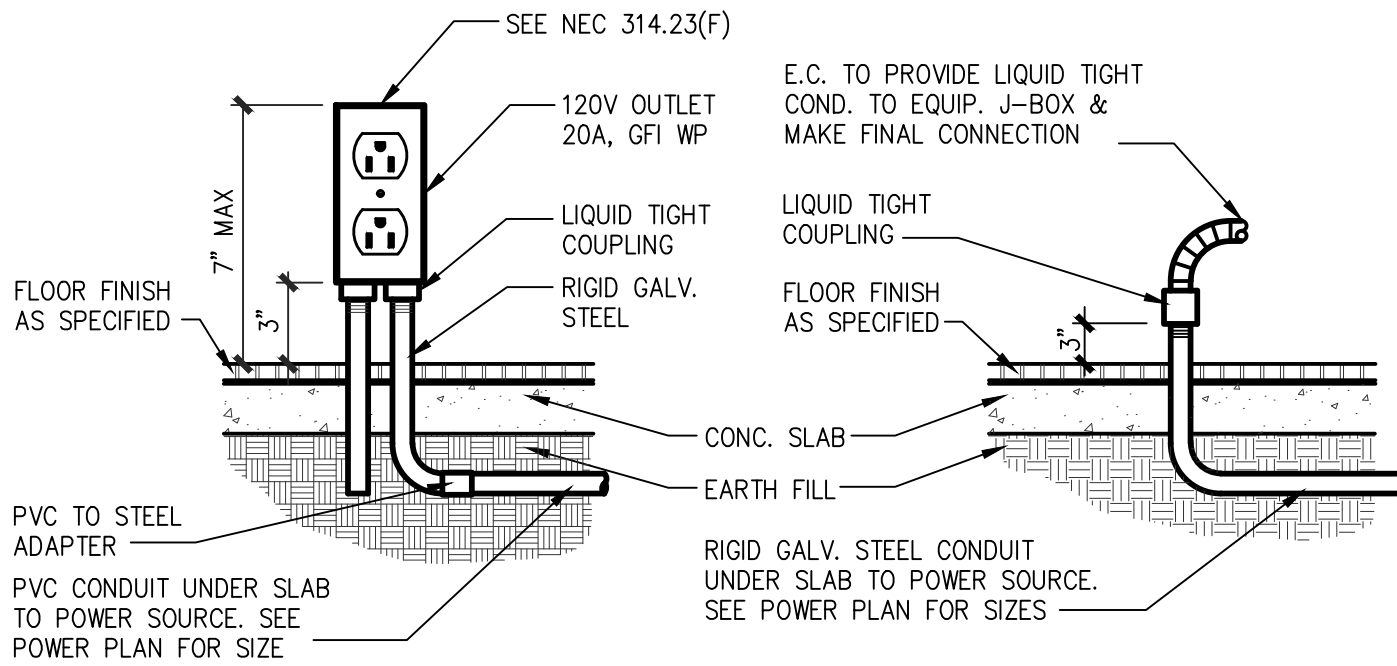


Drawing File: C:\Users\chudson\appdata\local\temp\AcPublish_16260\E000r2.dwg
Plotted by: chudson
Plotted Date: Jun 24, 2022 -- 10:16am



GENERAL NOTES

- ANY DEVIATIONS FROM THE DESIGN PLANS SHALL ONLY BE PERFORMED IF APPROVED BY THE LL'S/TENANT'S REPRESENTATIVE, THE DESIGN ENGINEER, AND THE LOCAL INSPECTOR. ALL WORK SHALL MEET OR EXCEED THE MINIMUM REQUIREMENTS OF ALL APPLICABLE CODES AND STANDARDS. HOWEVER, ANY DEVIATION FROM THE DESIGN PLANS IMPLIED BY LOCAL CODES THAT SUGGESTS INSTALLATION OF LESS THAN THE REQUIREMENTS SPECIFIED IN THE DESIGN PLANS SHALL NOT BE ALLOWED WITHOUT APPROVAL BY THE LL'S/TENANT'S REPRESENTATIVE OR THE DESIGN ENGINEER. ANY UNAPPROVED DEVIATION FROM THE DESIGN PLANS SHALL BE CORRECTED AT THE CONTRACTOR'S EXPENSE. ALL WORK SHALL BE PERFORMED BY A LICENSED CONTRACTOR, CONTRACTOR SHALL INSTALL COMPLETE AND WORKING SYSTEMS, EQUIPMENT AND COMPONENTS IN ACCORDANCE WITH MINIMUM REQUIREMENTS SHOWN IN THESE PLANS.
- ALL BRANCH CIRCUITS SHALL BE IN ZINC-COATED EMT OR RIGID CONDUIT AS PERMITTED BY THE NATIONAL ELECTRICAL CODE. MC CABLE IS APPROVED. HOWEVER, ALL WIRING EXPOSED TO CUSTOMER VIEW SHALL BE IN EMT OR RIGID CONDUIT. SCHEDULE 40 PVC CONDUIT IS APPROVED FOR SECONDARY UNDERGROUND SERVICE, UNDERGROUND TELEPHONE SERVICE, INCLUDING TELEPHONE BRANCH CIRCUIT CONDUIT LOCATED BELOW SLAB-ON-GRADE, BURIED ON BUILDING EXTERIOR, OR IN CONCRETE BLOCK WALLS. ALL CONDUIT SHALL BE 1/2" MINIMUM SIZE.
- ALL CONDUCTORS SHALL BE COPPER, THHN/THWN, UNLESS OTHERWISE NOTED.
- EC SHALL REVIEW "O" SHEETS FOR ALL EQUIPMENT CONNECTION REQUIREMENTS. ALL EQUIPMENT LOADS SHALL BE VERIFIED BEFORE EQUIPMENT AND/OR CIRCUIT INSTALLATION. VERIFY LOCATION OF ALL FLOOR OUTLETS BEFORE INSTALLATION.
- E.M.T. FITTINGS SHALL BE HEXAGONAL ALL STEEL COMPRESSION TYPE.
- THROUGH-OUT THESE SHEETS, REFERENCES TO CONDUIT/CONDUCTOR FILL ARE BASED ON E.M.T. TYPE CONDUIT AND THHN/THWN TYPE CONDUCTOR. FOR ANY OTHER TYPE MATERIALS, EC SHALL ADJUST CONDUCTOR FILL/CONDUIT SIZE TO REMAIN FULLY COMPLIANT WITH NEC.
- RECEPTACLES SHALL BE WHITE WITH WHITE PLATES; BRYANT, HUBBELL, LEVITON BRANDS EXCEPT AS OTHERWISE SPECIFIED.
- ELECTRICAL COVER PLATES IN ALL KITCHEN AND SERVING AREAS SHALL BE STAINLESS STEEL.
- ALL WALL OUTLET BOXES SHALL BE STEEL CITY OR RACO.
- MOUNT ALL RECEPTACLES 18" ABOVE FINISHED FLOOR TO CENTER OF BOX UNLESS OTHERWISE NOTED.
- DUPLEX AND DOUBLE DUPLEX RECEPTACLES FOR P.O.S. SYSTEM (ISOLATED GROUND RECEPTACLES) SHALL NOT SHARE CONDUIT WITH ANY "NORMAL POWER" DEVICES. ISOLATED GROUND RECEPTACLES SHALL BE "ORANGE" IN COLOR.
- EXHAUST FAN WIRING AND CONDUIT SHALL BE PROVIDED AND INSTALLED BY THE ELECTRICAL CONTRACTOR.
- THE ELECTRICAL CONTRACTOR SHALL PROVIDE AND INSTALL 3/4" CONDUIT FOR ALL THERMOSTATS AND TELEPHONE OUTLETS, UNLESS OTHERWISE NOTED OR INSTRUCTED.
- WHERE THE LENGTH OF ANY 120 VOLT BRANCH CIRCUIT EXCEEDS 50 FEET, CIRCUIT CONDUCTORS SHALL NOT BE SMALLER THAN #10 TO THE FIRST OUTLET. WHERE THE LENGTH OF ANY 120 VOLT BRANCH CIRCUIT EXCEEDS 100 FEET, CIRCUIT CONDUCTORS SHALL NOT BE SMALLER THAN #8 TO THE FIRST OUTLET.
- ELECTRICAL CONTRACTOR SHALL REFER TO ARCHITECTURAL PLANS FOR APPROVED FLOOR PLAN AND DIMENSIONS. DO NOT SCALE FROM THE ELECTRICAL DRAWINGS. ANY INCORRECT WORK DUE TO SCALING SHALL BE REPLACED AT THE CONTRACTOR'S EXPENSE.
- INSTALL CONDUITS AND WIRING FOR YARD LIGHTS, BUILDING SIGNS, AND POLE SIGNS AS SHOWN ON THE SITE PLAN. COORDINATE VOLTAGE DROP AS REQUIRED. EC SHALL CONFIRM THAT THE TRENCHES PROVIDED CONFORM WITH NEC 300.5 BEFORE LAYING ANY CONDUIT.
- MECHANICAL CONTROL WIRING IS THE RESPONSIBILITY OF THE MECHANICAL CONTRACTOR. MC SHALL MAKE ALL FINAL CONNECTIONS. SEE MECHANICAL PLANS FOR PROPER OPERATIONAL SEQUENCES AND COORDINATE WORK WITH THE HOOD CONTRACTOR.
- THE ELECTRICAL CONTRACTOR SHALL CONNECT ALL ELECTRICAL DEVICES, I.E., OUTLETS, JUNCTION BOXES, DISCONNECTS, AND HOOD LIGHTS, ETC. UNDER EACH KITCHEN GREASE EXHAUST HOOD TO SHUNT TRIP CIRCUIT BREAKERS CONTROLLED BY THE HOOD FIRE PROTECTION SYSTEM SO THAT WHEN THE FIRE PROTECTION SYSTEM IS ACTIVATED ALL ELECTRICAL DEVICES UNDER HOOD WILL BE DE-ENERGIZED. EMERGENCY GAS VALVE (ELECTRICALLY OPERATED) SHALL ALSO BE CLOSED WHEN FIRE PROTECTION SYSTEM IS ACTIVATED IN ORDER TO ISOLATE GAS SUPPLY TO APPLIANCES UNDER THE HOOD, SEE "P" SHEETS.
- JUNCTION BOXES: 4" X 2 1/8" OCTAGONAL OR 4" X 1 1/2" SQUARE MIN. USE 4" X 2 1/8" SQUARE WHERE 3 OR 4 LIGHTING FIXTURE WHIPS ARE SPLICED INTO ONE BOX, REC/SWITCH GANG BOXES SHALL BE 3 1/2" DEEP.
- MINIMUM CIRCUIT SIZE SHALL BE (2) #12, (1) #12 GRD., 1/2" CONDUIT - UNLESS NOTED OTHERWISE.
- EC SHALL COORDINATE ALL REQUIREMENTS OF SOUND SYSTEM WITH LL/TENANT AND SYSTEM VENDOR.
- CIRCUITS SHOWN ARE DIAGRAMMATIC. EC SHALL DETERMINE THE MOST EFFICIENT ROUTING OF CONDUIT IN FIELD.
- WALL SWITCHES WILL CONTROL CIRCUIT NUMBER AS SHOWN UNLESS NOTED OTHERWISE, SEE LIGHTING PLAN, AND "SWITCH BANK ELEVATIONS".
- LIGHTING FIXTURES IN AREAS WHERE FOOD IS PREPARED, OPEN FOOD IS STORED, OR WHERE UTENSILS ARE CLEANED SHALL HAVE A SHATTERPROOF LENS AND BE READILY CLEANABLE.
- LIGHTING INTENSITY SHALL NOT BE LESS THAN 50 FOOT CANDLES AT ALL FOOD PREP AND SERVING SURFACES AND AT ANY SURFACE WHERE A FOOD EMPLOYEE IS WORKING WITH FOOD OR WORKING WITH UTENSILS OR EQUIPMENT SUCH AS KNIVES, SLICERS, GRINDERS OR SAWS WHERE EMPLOYEE SAFETY IS A FACTOR. EC SHALL VERIFY PRIOR TO HEALTH DEPARTMENT INSPECTION.
- DRY FOOD STORAGE AND WALK-IN REFRIGERATION STORAGE SHALL NOT BE LESS THAN 10 FOOT CANDLES, AT +30" ABOVE FLOOR.
- LIGHTING INTENSITY SHALL NOT BE LESS THAN 20 FOOTCANDLES:
 - AT A SURFACE WHERE FOOD IS PROVIDED FOR CONSUMER SELF-SERVE SUCH AS BUFFETS AND SALAD BARS OR WHERE FRESH PRODUCE OR PACKAGED FOODS ARE SOLD OR OFFERED FOR CONSUMPTION;
 - INSIDE EQUIPMENT SUCH AS REACH-IN AND UNDER-COUNTER REFRIGERATORS;
 - AT A DISTANCE OF THIRTY INCHES ABOVE THE FLOOR IN AREAS USED FOR HANDWASHING, WAREWASHING, EQUIPMENT AND UTENSIL STORAGE, AND IN TOILET ROOMS.
- DUCTWORK, CONDUIT AND PIPING IN EXPOSED CEILING PUBLIC AREAS SHALL BE INSTALLED BETWEEN TRUSSES OR THROUGH TRUSSES WITH ALL ITEMS LOCATED ABOVE THE BOTTOM OF THE STRUCTURE UNLESS OTHERWISE NOTED ON THE PLAN.
- ALL WIRING IN ASSEMBLY AREAS SHALL CONFORM TO NEC 518.
- ALL EXPOSED CONDUIT SHALL BE INSTALLED AT LEAST 6" OFF THE FLOOR AND 2" AWAY FROM THE WALL TO FACILITATE CLEANING.
- EC SHALL PROVIDE LL/TENANT WITH COMPLETE SET OF ELECTRICAL AS-BUILT DRAWINGS SHOWING ALL DEVIATIONS FROM ORIGINAL DESIGN WITHIN 30 DAYS OF ACCEPTANCE.
- EC SHALL PROVIDE LL/TENANT WITH OPERATIONS & MAINTENANCE MANUAL(S) FOR ALL ELECTRICAL SYSTEMS AND EQUIPMENT WITHIN 30 DAYS OF ACCEPTANCE.
- EC SHALL TEST ALL LIGHTING SYSTEMS TO ENSURE PROPER CALIBRATION, ADJUSTMENT, PROGRAMMING AND OPERATION.
- EC SHALL KEEP OVERHEAD CONDUIT HIGH TO REDUCE CONFLICTS WITH DUCTWORK.

ELECTRICAL LEGEND

- DUPLEX WALL RECEPTACLE - 120/1P, 20 AMP RATED
- SIMPLEX RECEPTACLE - 120/1P, 20 AMP RATED
- 208V RATED - 1 PHASE OR 3 PHASE RECEPTACLE TO MATCH EQUIPMENT SERVED.
- ISOLATED GROUND RECEPTACLE, ORANGE FACE.
- DUPLEX WALL RECEPTACLE W/ TWO USB CHARGING PORTS - 120/1P, 20 AMP RATED
- JUNCTION BOX, SIZE AND USE AS REQUIRED; COVER PLATE SHALL OVERLAP THE BOX EDGE BY 1/2" WHERE RECESSED IN WALL WITH CONCEALED WIRING.
- QUAD WALL RECEPTACLE - 120/1P, 20 AMP RATED
- CEILING MOUNTED DUPLEX RECEPTACLE - 120/1P, 20 AMP RATED
- CEILING MOUNTED QUAD RECEPTACLE - 120/1P, 20 AMP RATED
- POWER DROP TO EQUIPMENT. EC SHALL VERIFY REQUIREMENTS PER EQUIPMENT.
- FUSED DISCONNECT SWITCH, HEAVY DUTY "HP" RATED, PROVIDE WEATHERPROOF COVER OUTDOORS.
- DATA WALL OUTLET - RUN 3/4" EMT TO ACCESSIBLE POINT ABOVE CEILING. PROVIDE PULL WIRE.
- SPECIAL RECEPTACLE TO MATCH EQUIPMENT SERVED.
- DOOR BELL WITH TRANSFORMER.
- MOTOR RATED SWITCH
- ANALOG TIMER
- DOOR BELL PUSH BUTTON
- HOOD ANNUNCIATOR/CIATOR - AUDIO AND VISUAL ALARM
- HOME RUNS TO PANEL
- CONDUIT - EXPOSED OR CONCEALED IN WALL
- CONDUIT BELOW SLAB
- GFI GROUND FAULT CIRCUIT INTERRUPTER
- EC ELECTRICAL CONTRACTOR
- MC MECHANICAL CONTRACTOR
- PC PLUMBING CONTRACTOR
- WP WEATHER PROOF
- WR WEATHER RESISTANT
- CLG. CEILING MOUNTED
- SPEAKERS - FOR REFERENCE ONLY. PROVIDED AND INSTALLED BY VENDOR.
- JUNCTION BOX, SIZE AND USE AS REQUIRED; COVER PLATE SHALL OVERLAP THE BOX EDGE BY 1/2" WHERE RECESSED IN WALL WITH CONCEALED WIRING.
- WALL SWITCH; SINGLE POLE UNLESS NOTED 3- OR 4-WAY; "P" INDICATES EQUIPPED WITH PILOT LIGHT TO INDICATE WHEN SWITCH IS ON; W.P. INDICATES WEATHERPROOF, "K" INDICATES KEY OPERATED SWITCH; +48" ABOVE FLOOR EXCEPT IN MASONRY WALLS WHERE HEIGHT SHALL BE ADJUSTED TO HAVE BOX EDGE OCCUR AT A MASONRY JOINT. "D" INDICATES "DIMMER". "OS" INDICATES "OCCUPANCY SENSOR" (LUTRON MAESTRO MS-OPS2-WH).

LMHT Project No. 21318

THIS DRAWING IS THE PROPERTY OF THE ARCHITECT AND MAY NOT BE REPRODUCED OR USED WITHOUT THE WRITTEN PERMISSION.

national restaurant designers

ARCHITECTS & ENGINEERS

7208 ACC Blvd., second floor, Raleigh, NC 27617
ph: 919 544 0087 fax: 919 544 9399

INRDN

06.24.2022

WORTH CAROLINA PROFESSIONAL ENGINEERS & ARCHITECTS

SEALED

049994

LMHT ENGINEER LICENSE NUMBER - C-1369

PROJECT: **HIGHWAY 55**
30 PROTOTYPE

1424 CURTIS BRIDGE ROAD
WILKESBORO, NC 28697

DRAWING: ELECTRICAL NOTES

Revisions

THRU ADDENDUM	"A"
01/20/2022	
PROJECT DATE	01/07/2022
Drawn By	JP
Checked By	JP
Sheet No.	E000

GENERAL NOTES

- EC SHALL PROVIDE GFI BREAKERS FOR ALL SINGLE PHASE RECEPTACLES RATED 150 VOLTS TO GROUND OR LESS, 50A OR LESS. FOR THREE PHASE RECEPTACLES RATED 150 VOLTS TO GROUND OR LESS, 100A OR LESS IN THE KITCHEN AND SERVING AREAS TO COMPLY WITH NEC 210.8.B.2. EC SHALL NOT USE GFI OUTLETS, UNLESS OTHERWISE NOTED. COORDINATE WITH PANEL SCHEDULES.
- EC SHALL PROVIDE 150A PANEL FOR TEMPORARY POWER DURING CONSTRUCTION WITH GFI PROTECTION AS REQUIRED.
- REFER TO EQUIPMENT SCHEDULE FOR CIRCUITS, RECEPTACLE TYPES AND POWER CORD REQUIREMENTS.
- ELECTRICAL CONTRACTOR SHALL REFER TO "Q" SHEETS FOR INFORMATION PERTAINING TO REQUIREMENTS FOR FOOD SERVICE EQUIPMENT.
- EC SHALL PROVIDE LABEL FOR ALL EQUIPMENT SPECIFIC RECEPTACLES.
- ALL P.O.S., KIOSK, AND CBT SYSTEMS SHALL HAVE AN ISOLATED GROUND OUTLET.
- EC SHALL PROVIDE ARC FLASH WARNING LABELS FOR ALL PANELS PER NEC 110.16.
- EC SHALL COORDINATE THE ELECTRICAL CONNECTION WITH THE EQUIPMENT SERVED. CONTACT ENGINEER FOR CLARIFICATION OF ANY EQUIPMENT PRIOR TO INSTALLATION, IF REQUIRED.

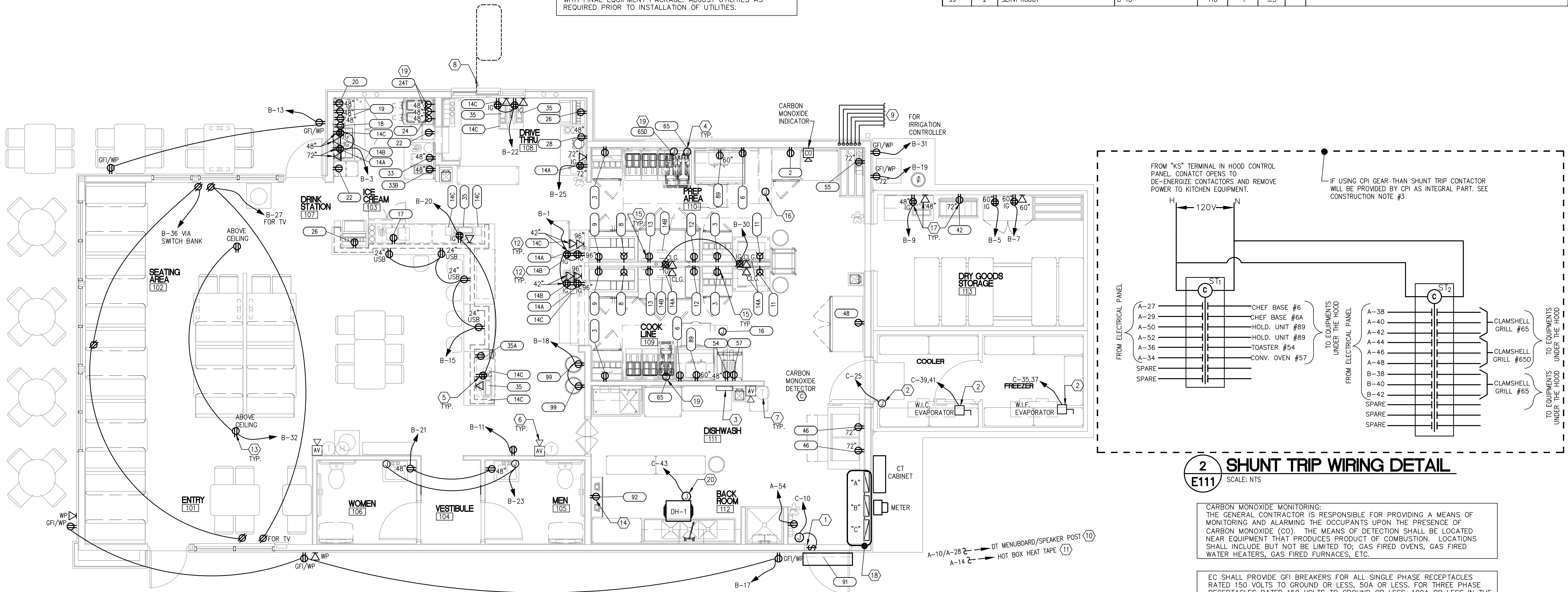
CONSTRUCTION NOTES

- ELECTRICAL CONTRACTOR TO INSTALL 1/2 HP 120V SNAP ACTION SWITCH TO ACTIVATE AIR CURTAIN FAN (MOUNT IN DOOR FRAME) J-BOX AND MOTOR SWITCH FURNISHED WITH AIR CURTAIN. SEE DETAIL ON SHEET E000.
- ALL CONDUITS ENTERING FREEZERS OR COOLERS SHALL BE INSTALLED WITH SEALS AND EXPANSION FITTINGS IN ACCORDANCE WITH NEC 300.7. EC SHALL PROVIDE NEMA 3R DISCONNECTS FOR WALK-IN EVAPORATORS. VERIFY EXACT POWER REQUIREMENTS AND FINAL LOCATION PRIOR TO ROUGH-IN.
- IF NOT USING CPI GEAR THAN SHUNT TRIP CONTACTOR HIGH ON WALL. EC SHALL WIRE 2-#12, 1/2" C. SHUNT CONTROL FROM HOOD CONTROL PANEL TO SHUNT TRIP CONTACTOR. TO DE-ENERGIZE CIRCUIT UPON ACTIVATION OF MANUAL PULL STATION, OR DETECTION BY SENSORS WITHIN THE HOOD. SEE HOOD SHEETS AND DETAIL 2/E111. IF USING CPI GEAR THAN SHUNT TRIP CONTACTOR WILL BE PROVIDED BY CPI AS INTEGRAL PART.
- PERMANENTLY CONNECTED EQUIPMENT SHALL BE PROVIDED WITH A LOCKABLE BREAKER CAPABLE OF BEING LOCKED IN THE OFF POSITION IN ACCORDANCE WITH NEC 422.31(B). EXTEND LIQUIDTIGHT FLEXIBLE METAL CONDUIT FROM JUNCTION BOX TO EQUIPMENT, AS REQUIRED.
- RECEPTACLE SHOWN SHALL BE INSTALLED IN CABINET OF SERVING COUNTER. GENERAL CONTRACTOR SHALL DRILL HOLES IN BOTTOM AND TOP OF COUNTER (REMOVE ALL BURRS AND PAINT THE PENETRATION) FOR CONDUIT STUB-UP AND CORD EXTENSIONS FROM APPLIANCE TO RECEPTACLE.
- AUDIO/VISUAL DEVICES FURNISHED BY HVAC SUPPLIER & INSTALLED BY EC IN APPROVED LOCATION TO SIGNAL DUCT DETECTOR ACTIVATION. MOUNT AT 6'-6" AFF. MC AND EC SHALL TEST AND VERIFY THE SMOKE DETECTION SYSTEM WORKS PROPERLY AND MEETS ALL LOCAL AND STATE CODE REQUIREMENTS.
- EC SHALL PROVIDE 3/4"C WITH PULLSTRING TO ABOVE CEILING AND OUTLET BOXES FOR T-STATS, SENSORS AND OVER RIDE BUTTONS. LOW VOLTAGE CONTROL WIRING BY MC. MOUNT ON S/S COVER PLATE.COORDINATE MOUNTING HEIGHT WITH MC PRIOR TO ROUGH -IN. SEE MECHANICAL DRAWINGS.
- (1) 1"CONDUIT FOR DETECTOR LOOP. VERIFY EXACT REQUIREMENTS AND LOCATION WITH DRIVE THRU SYSTEM INSTALLER PRIOR TO ROUGH IN.
- EC SHALL PROVIDE (3) 1" CONDUITS FROM JUNCTION BOX TO DRIVE-THRU MENU BOARD FOR EACH LOCATION. (1) 1" CONDUIT FOR SPEAKER, (1) 1" CONDUIT FOR ELECTRICAL POWER IN MENU BOARD, AND (1) 1" CONDUIT DETECTOR LOOP. EC SHALL VERIFY ELECTRICAL REQUIREMENTS FOR MENU BOARD AND MAKE FINAL CONNECTIONS. ALL CONDUITS SHALL BE CONCEALED WITHIN WALL FRAMING.
- SEE ARCHITECTURAL AND CIVIL SHEETS FOR DRIVE THRU MENU BOARD DETAILS. EC TO COORDINATE AND EXTEND WIRING TO ACTUAL LOCATION SHOWN ON CIVIL DRAWINGS.
- SEE CIVIL SHEETS FOR HOT BOX LOCATION. EC TO COORDINATE AND EXTEND WIRING TO ACTUAL LOCATION SHOWN ON CIVIL DRAWINGS.
- PROVIDE RECEPTACLE AND 2-GANG DATA BOXES WITH CONDUIT FOR TV, BUMP BAR AND PRINTER. VERIFY EXACT LOCATION AND MOUNTING REQUIREMENTS WITH LL/TENANT AND LL'S/TENANT'S VENDOR PRIOR TO ROUGH-IN. PROVIDE ADDITIONAL RECEPTACLE AND DATA AS REQUIRED.
- PROVIDE RECEPTACLE ABOVE CEILING. VERIFY EXACT LOCATION AND REQUIREMENTS WITH OWNER PRIOR TO ROUGH IN.
- COORDINATE MOUNTING HEIGHT REQUIREMENTS FOR WATER HEATER WITH PLUMBING CONTRACTOR PRIOR TO ROUGH IN.
- EC SHALL RUN POWER AND DATA CONDUITS FROM NEAREST FULL HEIGHT WALL TO LOW HEIGHT WALL.
- EC SHALL PROVIDE 120V INTERLOCK WIRING BETWEEN HOOD CONTROL PANEL AND ANSUL SYSTEM. REFER TO HOOD SHOP DRAWINGS. COORDINATE EXACT REQUIREMENT WITH HOOD INSTALLER.
- EC SHALL SURFACE MOUNT RECEPTACLES AND DATA IN PREFAB WALK-IN BOX.
- EC SHALL PROVIDE ALTERNATIVE BID TO USE UNITIZED CPI POWER DISTRIBUTION SYSTEM IN LIEU OF LOOSE ELECTRICAL PANELS. REFER TO SHEET E601 FOR MORE INFORMATION.
- OPTIONAL EQUIPMENT - EC TO VERIFY/COORDINATE FINAL EQUIPMENT PACKAGE PRIOR TO INSTALLING UTILITIES OR CONNECTING EQUIPMENT.
- DEHUMIDIFIER ABOVE CEILING. EC SHALL VERIFY EXACT LOCATION AND POWER REQUIREMENTS WITH MC PRIOR TO ROUGH IN.

EC SHALL VERIFY ALL EQUIPMENT AND POWER REQUIREMENTS WITH FINAL EQUIPMENT PACKAGE. ADJUST UTILITIES AS REQUIRED PRIOR TO INSTALLATION OF UTILITIES.

ELECTRICAL SCHEDULE

ITEM	QTY.	DESCRIPTION	CIRCUIT #	VOLT	PHASE	AMPS	HP	ELECTRICAL REMARKS
2	1	1-DOOR FREEZER	A-15	115	1	3.2	1/3	
3	4	REFRIG. PREPBOX - 29"W	A-17/19/21/23	115	1	7	1/5	
6	1	REFRIG. CHEFBASE - 48"W	A-27	115	1	6	1/4	
6A	1	REFRIG. CHEFBASE - 36"W	A-29	115	1	6	1/4	
8	2	WARMING STATION	A-31,33/A-35,37	120/208	1	14.3		NEMA L14-20P
9	2	WORKTOP FREEZER	A-39/A-41	115	1	3	1/5	
11	2	STEAMER	B-35,37/B-39,41	208	1	15.9		NEMA 6-20P
12	2	COOKER/WARMER	B-29/B-34	120	1	15.0		
13	2	REFRIG. PREPBOX - 60"W	A-16/A-25	115	1	6.5	1/2	
14A	7	MONITOR	B-1/B-3/B-30/B-23	120	1	-		
14B	5	BUMPBAR	B-1/B-3/B-30	120	1	-		
14C	9	PRINTER	B-1/3/20/22	120	1	-		
16	2	HOOD SYSTEM	C-19	120	1	-		REFER TO HOOD SHOP DRAWINGS
17	1	REFRIG. PREPBOX - 36"W	B-14	115	1	2.0	1/6	
18	1	REFRIG. PREPBOX	A-18	115	1	6.5	1/3	
19	2	MIX-IN BLENDER	A-20/A-32	115	1	2.1	3/4	
20	1	COOKER/WARMER	A-22	120	1	8.3		
22	2	DIPPING CABINET	B-2/B-28	115	1	1.4	1/8	
24	1	FROZEN CUSTARD MACHINE	A-24,26	208	1	15.0	1 1/2	NEMA 6-20P
24T	1	OPTIONAL FROZEN CUSTARD MACHINE	A-43,45/47,49	208	1	24/22	(2) 2	(2) NEMA 6-30P
26	2	SODA MACHINE	B-4/B-6	120	1	1.0		
28	1	ELEC. JUICE DISPENSER	B-10	120	1	3.0		
33	1	COFFEE/TEA BREWER	B-8	120	1	14.0		
33B	1	COFFEE BREWER	B-12	120	1	15		
35	4	POS TERMINAL SYSTEM	B-20/B-22	120	1	.37		
35A	1	DROP SAFE - UNDERCOUNTER	A-30	120	1	-		
42	1	MODULAR BIB RACK	B-33	120	1	1.5		
46	2	ICE MACHINE W/ FLAKER HEAD	C-11/C-13	115	1	11.8		
47C	1	OUTSIDE WALK-IN COOLER (BUILT w/#47F)	C-39,41/C-38,40,42	208	3/1	5/2.9		
47F	1	OUTSIDE WALK-IN FREEZER (BUILT w/#47C)	C-35,37/C-32,34,36	208	3/1	5/2.9		
48	1	2-DOOR COOLER	B-16	115	1	9	1/2	
54	1	TOASTER - 4 SLOT	A-36	120	1	15.0		
55	1	WATER FILTRATION SYS. w/BOOSTER PUMP	C-12	120	1	0.08		
57	1	CONVECTION OVEN	A-34	120	1	13.3		
65	2	ELECTRIC 12" CLAMSHELL GRILL	A-38,40,42/B-38,40,42	208	3	26.2		
65D	1	OPTIONAL ELECTRIC 24" CLAMSHELL GRILL	A-44,46,48	208	3	52.4		
89	2	DEDICATED HOLDING CABINET	A-50/A-52	120	1	10		
91	1	AIR CURTAIN	C-10	120	1	5.1		
92	2	INSTANTANEOUS WATER HEATER	C-23	120	1	59W		
99	2	SERV ROBOT	B-18	110	1	3.5		



1 ELECTRICAL POWER PLAN
SCALE: 1/4" = 1'-0"

2 SHUNT TRIP WIRING DETAIL
SCALE: NTS

CARBON MONOXIDE MONITORING:
THE GENERAL CONTRACTOR IS RESPONSIBLE FOR PROVIDING A MEANS OF MONITORING AND ALARMING THE OCCUPANTS UPON THE PRESENCE OF CARBON MONOXIDE (CO). THE MEANS OF DETECTION SHALL BE LOCATED NEAR EQUIPMENT THAT PRODUCES PRODUCT OF COMBUSTION. LOCATIONS SHALL INCLUDE BUT NOT BE LIMITED TO: GAS FIRED OVENS, GAS FIRED WATER HEATERS, GAS FIRED FURNACES, ETC.

EC SHALL PROVIDE GFI BREAKERS FOR ALL SINGLE PHASE RECEPTACLES RATED 150 VOLTS TO GROUND OR LESS, 50A OR LESS. FOR THREE PHASE RECEPTACLES RATED 150 VOLTS TO GROUND OR LESS, 100A OR LESS IN THE KITCHEN AND SERVING AREAS TO COMPLY WITH NEC 210.8.B.2. EC SHALL NOT USE GFI OUTLETS, UNLESS OTHERWISE NOTED. COORDINATE WITH PANEL SCHEDULES.

LHMT Project No. 21318

THIS DRAWING IS THE PROPERTY OF THE ARCHITECT AND MAY NOT BE REPRODUCED OR USED WITHOUT THE ARCHITECT'S PERMISSION.

INRD national restaurant designers
ARCHITECTS & ENGINEERS
7208 ACC Blvd., second floor, Raleigh, NC 27617
ph: 919 544 0087 fax: 919 544 9399

06.24.2022

SEAL
049994
ENGINEER
LHMT ENGINEER LICENSE
NUMBER - C-1369

PROJECT: **HIGHWAY 55**
30 PROTOTYPE
1424 CURTIS BRIDGE ROAD
WILKESBORO, NC 28697
DRAWING: ELECTRICAL POWER PLAN

Revisions

THRU ADDENDUM "A"
01/20/2022

EQUIP. UPDATE - 06.24.2022

PROJECT DATE
01/07/2022

Drawn By
JP

Checked By
JP

Sheet No.

E111

Drawing File: C:\Users\chudson\appdata\local\temp\AcPublish_16260\1212.dwg
Plotted by: chudson
Plotted Date: Jun 24, 2022 - 10:16am

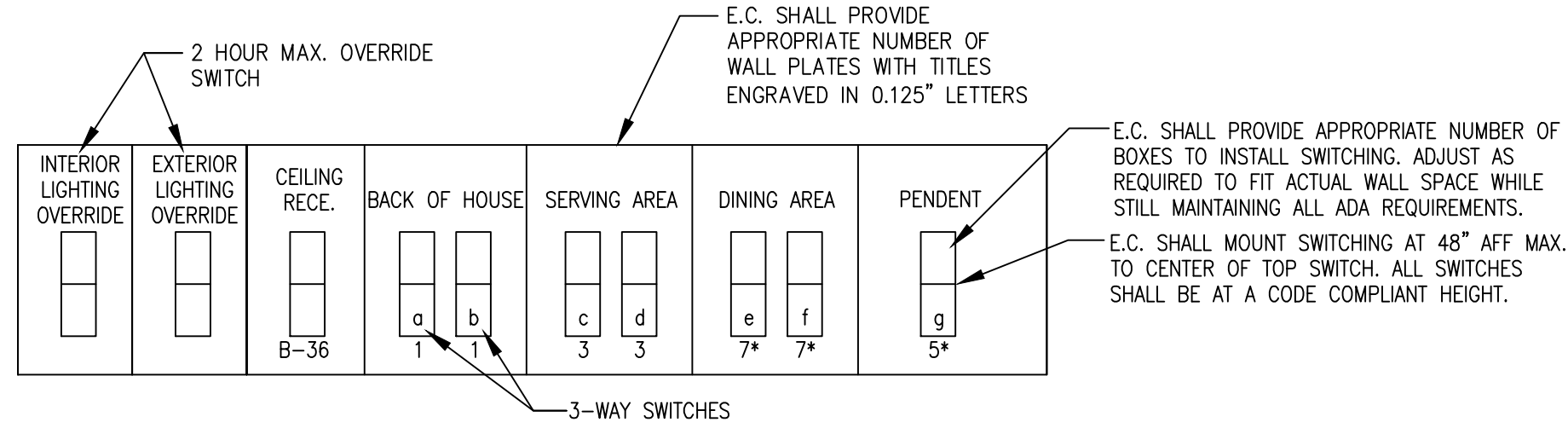
LUMINAIRE SCHEDULE								
QTY	ID	DESCRIPTION	MAKE + MODEL	VOLTAGE	REQUIRED LAMPS		WATTS	MOUNTING
					NUMBER	TYPE		
15	A	2X4 LED PANEL	HIGHLINE:PL2X4-D-UNV-50-30-90-WH-120	120	1	LED	50W	GRID
25	B	2X2 LED PANEL	HIGHLINE:PL2X2-D-UNV-36-30-90-WH-120	120	1	LED	36W	GRID
3	BE	2X2 LED PANEL	HIGHLINE:PL2X2-D-UNV-36-30-90-WH-120-EM15	120	1	LED	36W	GRID
12	C	CAN LIGHT	HIGHLINE:DUP65-D-UNV-28-30-90-BK-S	120	1	LED	28W	CEILING
1	D	IN GROUND LIGHT	HIGHLINE:IG2600-ND-UNV-27-40-90-BZ-30	120	1	LED	27W	IN GROUND
7	E1	WALL MTD EMERGENCY LIGHT	HIGHLINE:EM2200-ND-120-WH	120	2	INCLUDED	N/A	WALL
3	EE	EXTERIOR EMERGENCY	HIGHLINE:EMOVAL-ND-UNV-ACEM-BK	120	2	INCLUDED	11W	WALL
6	G	PENDANT	KICHLER: P5143-0930K9	120	1	LED	9W	PENDANT 6'-6" A.F.F.
2	L	COOLER/FREEZER LIGHTS	WALK-IN MANUF.	120	1	LED	30W	CEILING
2	M	1X4 LED LINEAR LIGHT	WALK-IN MANUF.	120	1	LED	32W	SURFACE
1	X	EMERGENCY-EXIT COMBO	HIGHLINE:EXWEM2-ND-UNV-LED-RD-WH-NC	120	2	INCLUDED	N/A	WALL
3	X2	SINGLE FACE EXIT SIGN	HIGHLINE:EXEDGE-ND-UNV-SF-RD-WH-NC	120	1	INCLUDED	N/A	CEILING

LIGHTING PACKAGE VENDORS CONTACTS:
CONTRACTOR CAN CONTACT BELOW VENDORS FOR PRICING AND VALUE ENGINEERING PACKAGES.

1. HIGHLINE LED:
ABHISHEK RAKHASIYA, abhi@highlineled.com, 214-501-7100

2. HERMITAGE LIGHTING:
SARA MOSSER, smosser@gohermitage.com, 615-843-3380

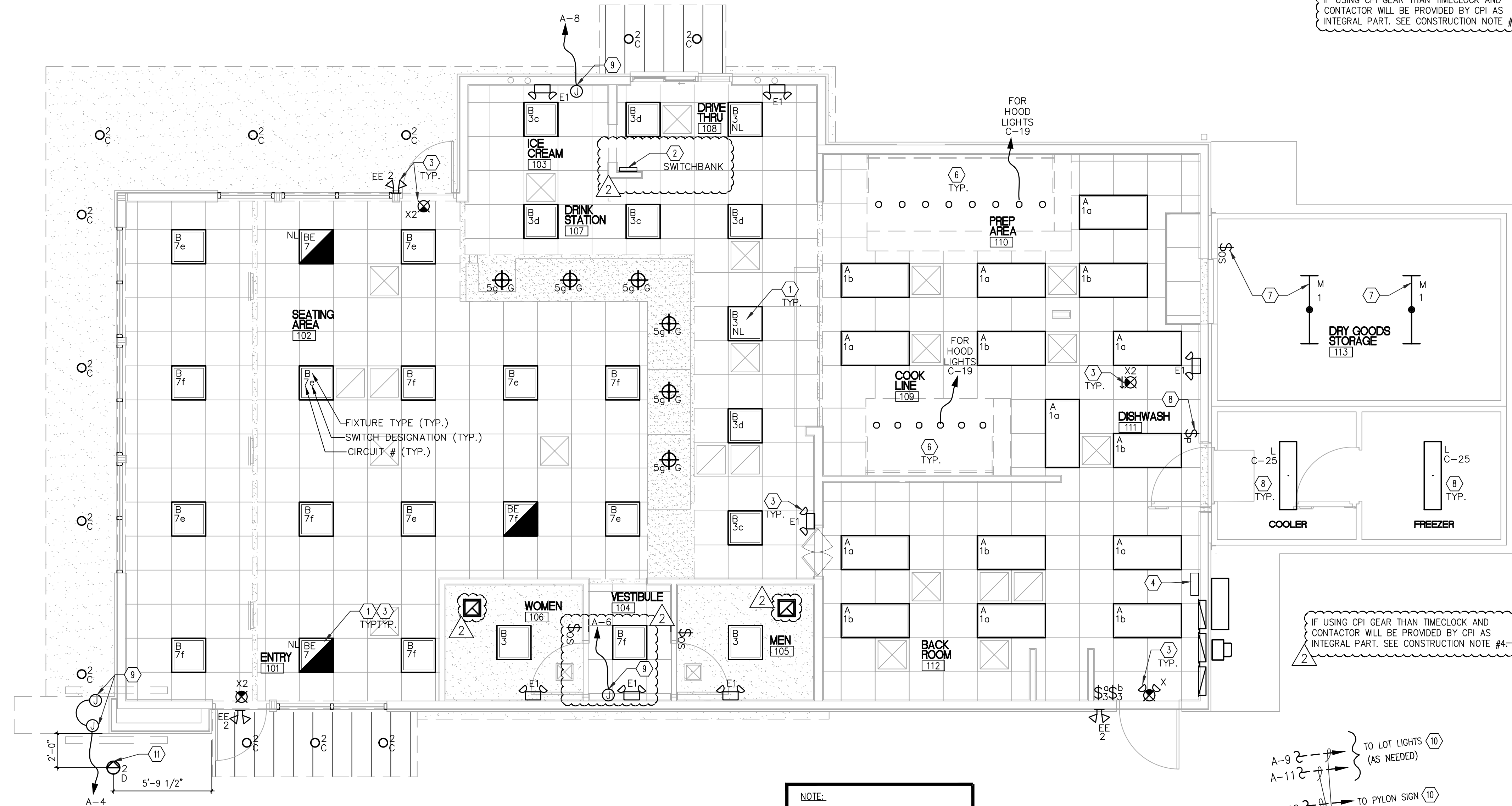
3. CLI:
FRANK HALCOVICH, frank@commercial-lighting.net, 800-755-0155



*=LED RATED DIMMER

2 SWITCHBANK DETAIL

SCALE: NONE



1 ELECTRICAL LIGHTING PLAN

SCALE: 1/4" = 1'-0"

NOTE:
ALL LIGHTING CIRCUIT DESIGNATION REFER TO PANEL "A" UNLESS OTHERWISE NOTED.

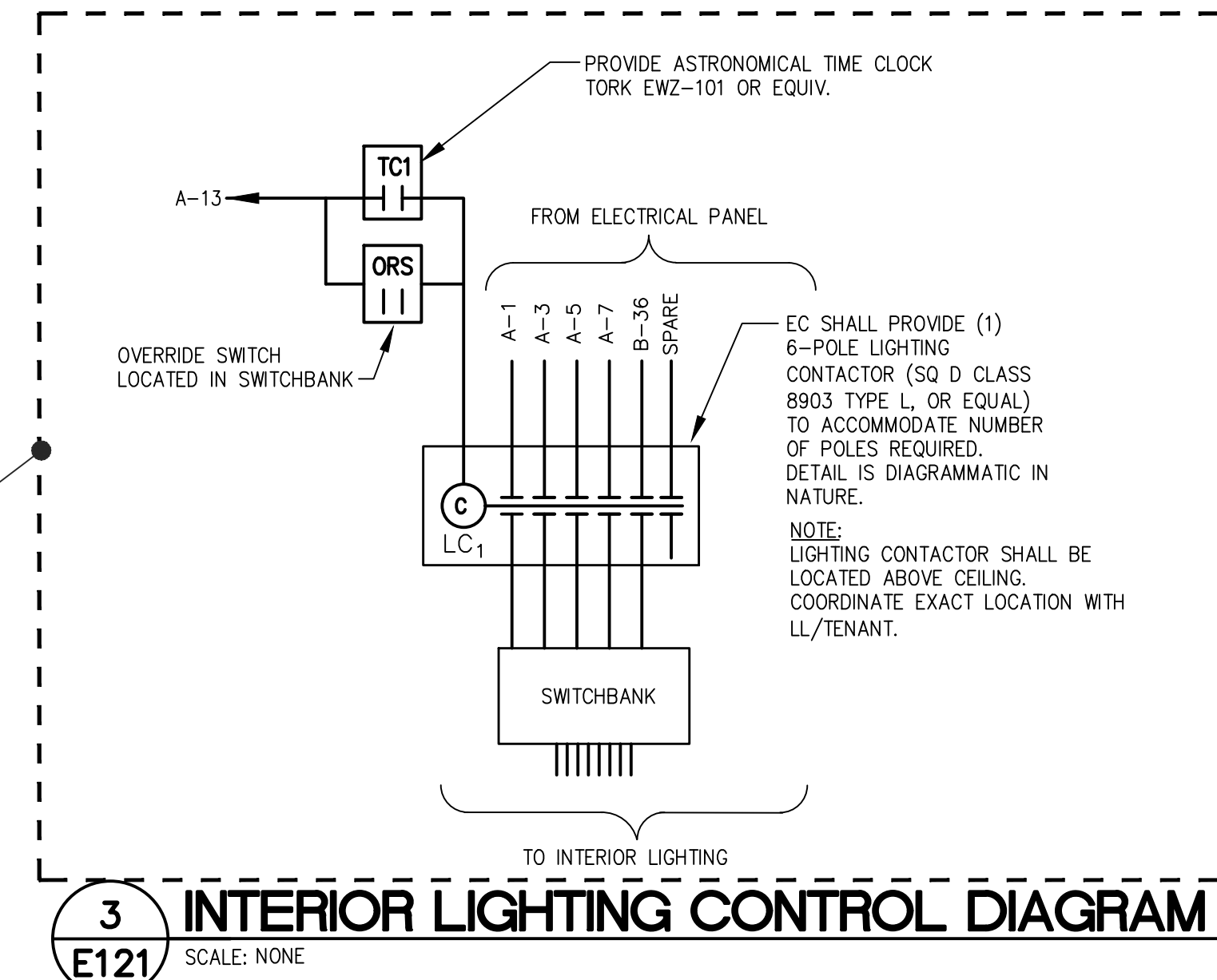
CONSTRUCTION NOTES

- 1 FIXTURES INDICATED AS NIGHT LIGHTS (DESIGNATED "NL") SHALL BE CONNECTED TO THE LIGHTING CIRCUIT AHEAD OF ANY SWITCHING DEVICE (UNSWITCHED HOT) TO PROVIDE AN ALWAYS ON NIGHT LIGHT.
- 2 EC SHALL LOCATE SWITCHBANK FOR LIGHTS AS SHOWN. SEE SWITCHBANK DETAIL 2/E121.
- 3 CONNECT ALL EMERGENCY AND EXIT LIGHTS TO LOCAL LIGHTING CIRCUIT AHEAD OF ANY SWITCH PER NEC 700.12F.
- 4 IF NOT USING CPI GEAR THAN INSTALL ASTRONOMICAL TIME CLOCKS AND CONTACTORS AS SHOWN IN DETAILS 3/E121 AND 4/E121. THIS SHEET. IF USING CPI GEAR THAN LIGHTING CONTROLS WILL BE PROVIDED BY CPI AS INTEGRAL PART.
- 5 NOT USED.
- 6 HOOD LIGHT FIXTURES FURNISHED WITH HOOD. EC SHALL PROVIDE LAMPS. SEE HOOD CONTROL PANEL DETAILS ON "H" SHEETS FOR CIRCUITING HOOD LIGHTS.
- 7 DRY STORAGE LIGHTS PROVIDED BY WALK-IN MANUFACTURER. EC SHALL PROVIDE POWER AND OCCUPANCY SENSOR SWITCH AS SHOWN.
- 8 WALK-IN LIGHTS AND SWITCH PROVIDED BY WALK-IN MANUFACTURER. EC SHALL PROVIDE POWER AS SHOWN. COORDINATE EXACT REQUIREMENTS WITH WALK-IN MANUFACTURER.
- 9 ELECTRICAL CONTRACTOR TO PROVIDE DIRECT ACCESSIBLE POWER FOR ALL ELECTRICAL SIGNAGE WITHIN 6'-0" OF THE SIGN LOCATION PROVIDE CONDUIT AND STUB THRU EXTERIOR WALL, J-BOX AND ANY REQUIRED O.C.P. COORDINATE LOCATION WITH FINAL SIGN PACKAGE PRIOR TO ROUGH-IN. EC SHALL COMBINE POWER SIGNAGAES AT SAME WALL UNLESS PROVIDED SEPARATE POWER.
- 10 SEE CIVIL SITE PLAN FOR LOCATION OF LOT LIGHTS AND PYLON SIGN. VERIFY VOLTAGE DROP IS 3% OR LOWER. DISCONNECT SWITCH FOR PYLON SIGN SHALL BE FURNISHED BY SIGN CONTRACTOR.
- 11 IN GROUND MOUNTED FIXTURE. EC SHALL COORDINATE EXACT MOUNTING REQUIREMENTS WITH MANUFACTURER FOR INSTALLATION.

GENERAL NOTES

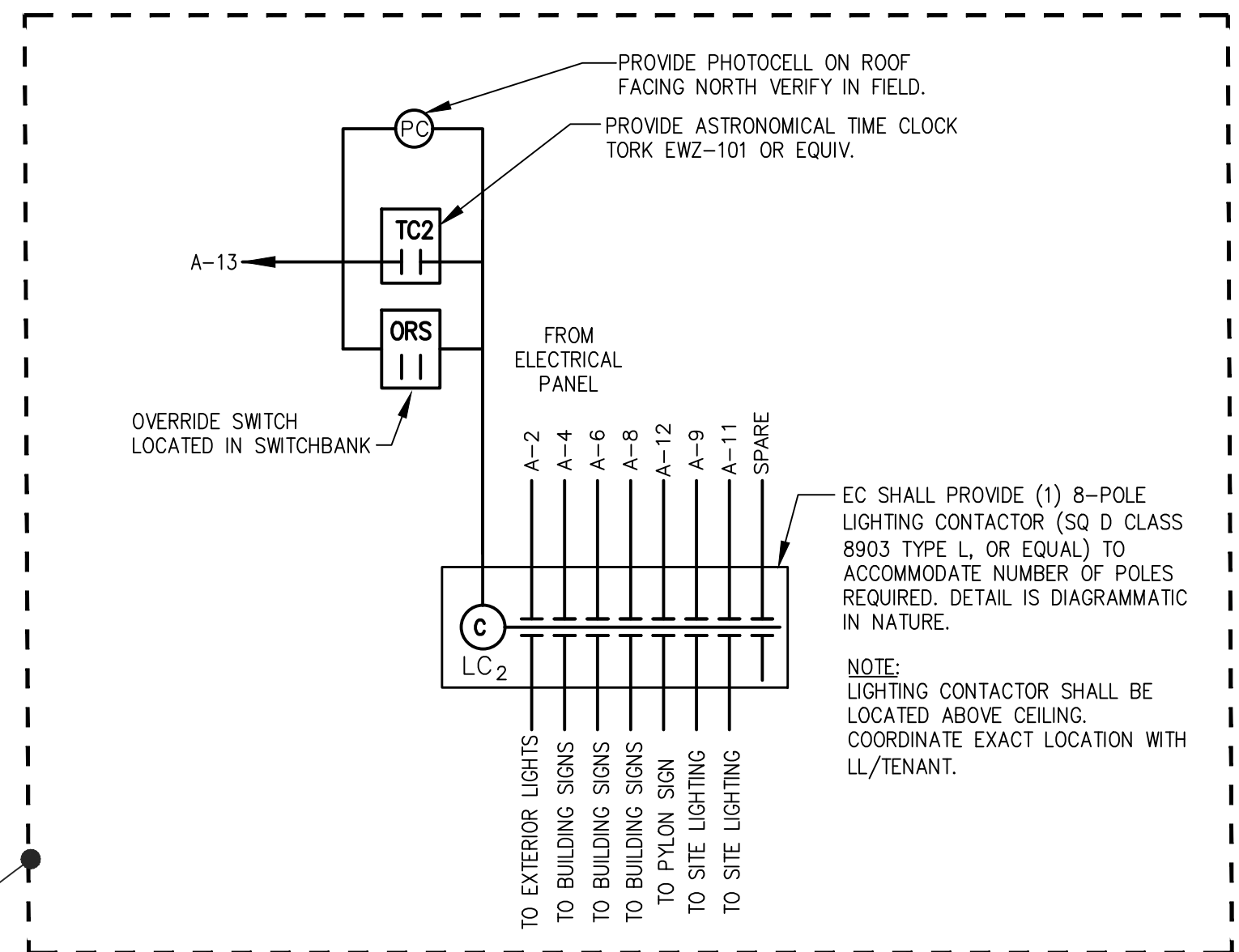
1. REFER TO ARCHITECTURAL REFLECTED CEILING PLAN FOR EXACT LOCATIONS OF LUMINAIRES.
2. EACH LUMINAIRE SHALL BE SEPARATELY SUPPORTED FROM STRUCTURE BY OPPOSING CORNERS. DO NOT USE CONDUIT FOR SUPPORT OF EITHER FIXTURES OR BOXES.
3. USE FLEXIBLE METALLIC CONDUIT (GREENFIELD) FOR CONNECTION OF LAY-IN FIXTURES.
4. PROVIDE GROUND CONDUCTOR IN ALL CONDUIT RUNS (NOT ILLUSTRATED).
5. VERIFY LOCATION OF WALL MOUNTED EMERGENCY LUMINAIRES TO AVOID CONFLICT WITH KITCHEN EQUIPMENTS.
6. LIGHTING FIXTURES IN AREAS WHERE FOOD IS PREPARED, OPEN FOOD IS STORED, OR WHERE UTENSILS ARE CLEANED SHALL HAVE A SHATTERPROOF LENS AND BE READILY CLEANABLE.
7. LIGHTING INTENSITY SHALL NOT BE LESS THAN 50 FOOT CANDLES AT A SURFACE WHERE A FOOD EMPLOYEE IS WORKING WITH FOOD OR WORKING WITH UTENSILS OR EQUIPMENT SUCH AS KNIVES, SLICERS, GRINDERS, OR SAWS WHERE EMPLOYEE SAFETY IS A FACTOR.
8. FOOD AND UTENSIL STORAGE ROOMS, REFRIGERATION STORAGE, AND TOILET ROOMS SHALL NOT BE LESS THAN 10 FOOT CANDLES, AT +30" ABOVE FLOOR.
9. EC SHALL TEST ALL LIGHTING SYSTEMS TO ENSURE PROPER CALIBRATION, ADJUSTMENT, PROGRAMMING AND OPERATION.

IF USING CPI GEAR THAN TIMELOCK AND CONTACTOR WILL BE PROVIDED BY CPI AS INTEGRAL PART. SEE CONSTRUCTION NOTE #4.



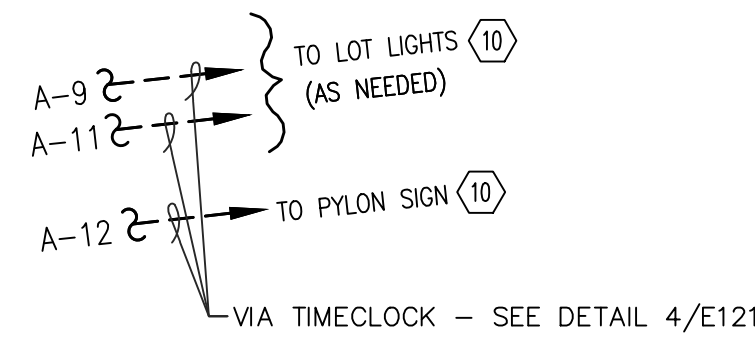
3 INTERIOR LIGHTING CONTROL DIAGRAM

SCALE: NONE



4 EXTERIOR LIGHTING CONTROL DIAGRAM

SCALE: NONE



LHMT Project No. 21318

THIS DRAWING IS THE PROPERTY OF THE ARCHITECT AND MAY NOT BE REPRODUCED OR USED WITHOUT THE WRITTEN PERMISSION.

INRD national restaurant designers
ARCHITECTS & ENGINEERS
7208 ACC Blvd., second floor, Raleigh, NC 27617
ph: 919 544 0087 fax: 919 544 9399

06.24.2022

SEAL
049994

ENGINEER
LUMINAIRE

LHMT ENGINEER LICENSE
NUMBER - C-1369

PROJECT: **HIGHWAY 55**
30 PROTOTYPE
1424 CURTIS BRIDGE ROAD
WILKESBORO, NC 28697

DRAWING: ELECTRICAL LIGHTING PLAN

Revisions

THRU ADDENDUM "A"
01/20/2022

EQUIP. UPDATE - 06.24.2022

PROJECT DATE
01/07/2022

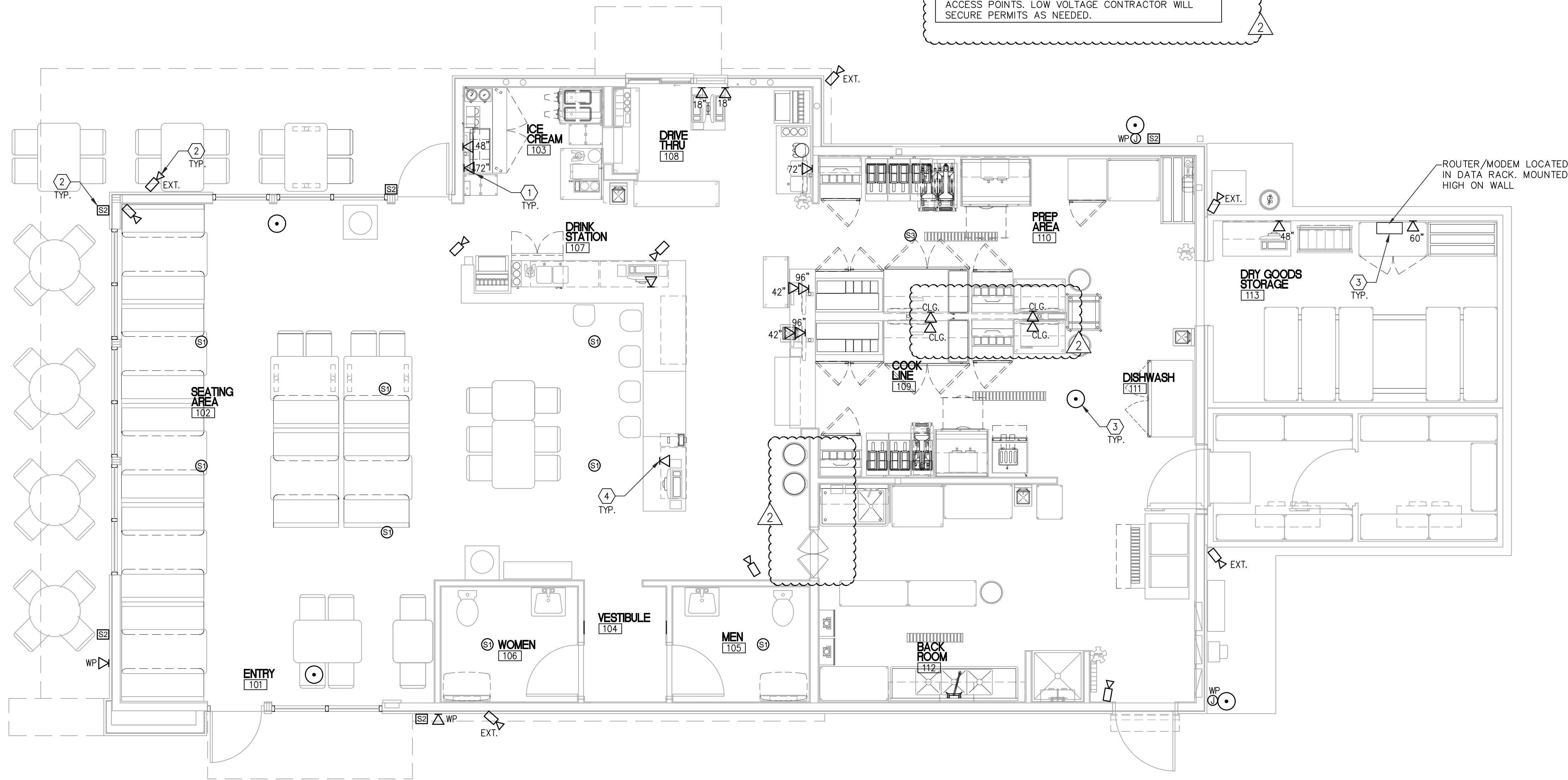
Drawn By
JP

Checked By
JP

Sheet No.

E121

Drawing File: C:\Users\chudson\AppData\Local\Temp\AcPublish_16260\E1312.dwg
Plotted by: chudson
Plotted Date: Jun 24, 2022 -- 10:17am



1 ELECTRICAL LOW VOLTAGE PLAN
E131 SCALE: 1/4" = 1'-0"

CONSTRUCTION NOTES

- EC SHALL PROVIDE 2-GANG BOXES, EMPTY CONDUIT WITH PULL STRING UP TO THE CEILING FOR KITCHEN MONITORS, PRINTERS AND BUMPBAR. COORDINATE ROUGH-IN HEIGHTS AND EXACT REQUIREMENTS WITH LL/TENANT AND LL'S/TENANT'S VENDOR PRIOR TO ROUGH-IN.
- EC SHALL PROVIDE AND INSTALL STUB THRU CONDUIT FROM EXTERIOR WALL FOR EXTERIOR SPEAKER AND SECURITY CAMERAS. VERIFY FINAL LOCATION AND REQUIREMENTS WITH LL/TENANT AND LL'S/TENANT'S VENDOR PRIOR TO ROUGH-IN.
- EC SHALL PROVIDE AND INSTALL CONDUITS WITH PULL WIRE UP TO 6" ABOVE THE CEILING FROM MODEM LOCATION TO RUN LOW VOLTAGE CABLING TO POS AND ACCESS POINTS. VERIFY WITH IT CONTRACTOR FOR REQUIRED CONDUIT SIZE AND QUANTITY.
- EC SHALL PROVIDE AND INSTALL STUB UP CONDUIT FROM NEAREST FULL HEIGHT WALL TO LOW HEIGHT WALL AT FRONT POS LOCATIONS. VERIFY FINAL LOCATION AND REQUIREMENTS WITH LL/TENANT AND LL'S/TENANT'S VENDOR PRIOR TO ROUGH-IN.

GENERAL NOTES

- ELECTRICAL CONTRACTOR TO CONFIRM / COORDINATE LOCATIONS OF SECURITY CAMERAS, SPEAKERS AND WIRELESS ACCESS POINTS WITH LL/TENANT AND LL'S/TENANT'S VENDOR.
- POS STATIONS AND I.T. EQUIPMENT INSTALLED BY LL'S/TENANT'S VENDOR- EC TO PROVIDE POWER/DATA OUTLETS AS REQUIRED.
- EC SHALL PROVIDE REQUIRED J-BOX AND CONDUITS WITH PULL WIRE FOR LOW VOLTAGE CABLES AS REQUIRED FOR POS, KITCHEN MONITORS, SECURITY AND MUSIC SYSTEMS. COORDINATE EXACT REQUIREMENTS WITH LL'S/TENANT'S VENDOR..

LOW VOLTAGE SYSTEM LEGEND

SYMBOL	DESCRIPTION
WP	WEATHER PROOF LOW VOLTAGE JUNCTION BOX
S	CEILING FLUSH MOUNT INTERIOR SPEAKER
S	DRIVE THRU COOKLINE SPEAKER
S	MUSIC SPEAKERS (EXTERIOR WALL MOUNTED)
	ROUTER/MODEM LOCATION
	ACCESS POINT
	SECURITY CAMERA
EXT.	EXTERIOR SECURITY CAMERA
	DATA WALL OUTLET - RUN 3/4" EMT TO ACCESSIBLE POINT ABOVE CEILING. PROVIDE PULL WIRE.

LMHT Project No. 21318

THIS DRAWING IS THE PROPERTY OF THE ARCHITECT AND MAY NOT BE REPRODUCED OR USED WITHOUT THE WRITTEN PERMISSION.

INRD national restaurant designers
ARCHITECTS & ENGINEERS
7208 ACC Blvd., second floor, Raleigh, NC 27617
ph: 919 544 0087 fax: 919 544 9399

06.24.2022

SEAL
049994

ENGINEER
J. LUMAS P.E.

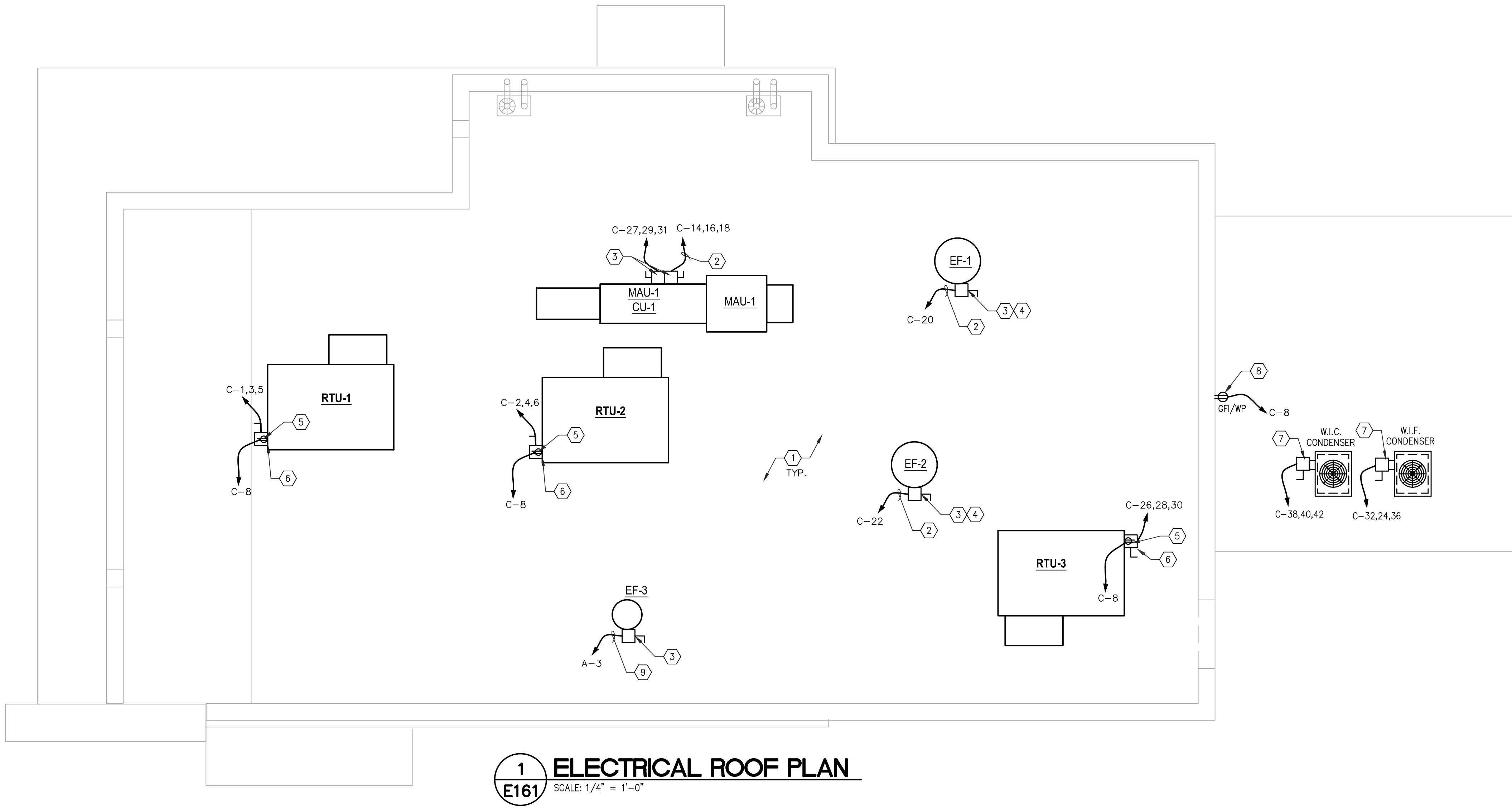
LMHT ENGINEER LICENSE
NUMBER - C-1369

PROJECT: **HIGHWAY 55**
30 PROTOTYPE
1424 CURTIS BRIDGE ROAD
WILKESBORO, NC 28697

DRAWING: ELECTRICAL LOW VOLTAGE PLAN

Revisions	
THRU ADDENDUM 01/20/2022	"A"
EQUIP. UPDATE - 06.24.2022	
PROJECT DATE 01/07/2022	
Drawn By JP	
Checked By JP	
Sheet No.	E131

Drawing File: C:\Users\chudson\appdata\local\temp\AcPublish_6472\E161r3.dwg
Plotted by: chudson
Plotted Date: Nov 11, 2022 -- 11:04am



1
E161 **ELECTRICAL ROOF PLAN**
SCALE: 1/4" = 1'-0"

CONSTRUCTION NOTES

- 1 ALL ELECTRICAL CONDUITS PENETRATING ROOF SHALL GO THROUGH PITCH POCKETS INSTALLED BY GC. EC & GC SHALL COORDINATE. INSTALL PER ROOFING MANUFACTURER'S RECOMMENDATIONS AND DETAILS.
- 2 CIRCUIT SHALL BE ROUTED THROUGH THE HOOD CONTROL PANEL, SEE MECHANICAL "M" SHEETS. COORDINATE W/ MC
- 3 DISCONNECT SWITCH FURNISHED WITH FAN BY HOOD CONTRACTOR.
- 4 EC SHALL PROVIDE A FLEX CONNECTION OF PROPER LENGTH TO ALLOW EXHAUST FAN TO REMOVE FROM CURBS AND PLACED ON ROOF FOR CLEANING EXHAUST DUCTWORK
- 5 WR/GFI RECEPTACLE IS FACTORY INSTALLED. EC SHALL CONNECT TO CIRCUIT AS SHOWN.
- 6 VERIFY IF, NEMA 3R SAFETY DISCONNECT SWITCHES ARE FACTORY INSTALLED IN RTU'S. IF NOT, EC SHALL PROVIDE NEMA 3R DISCONNECT AS PER EQUIPMENT NAMEPLATE DATA. VERIFY IN FIELD. COORDINATE WITH MC AND GC.
- 7 EC SHALL PROVIDE AND INSTALL NEMA-3R SAFETY DISCONNECT SWITCH FOR REMOTE CONDENSING UNIT. EC SHALL VERIFY REQUIREMENTS WITH WALK IN MANUFACTURER PRIOR TO ROUGH-IN.
- 8 EC SHALL PROVIDE AND INSTALL GFI/WP SERVICE RECEPTACLE ABOVE 18" OF FINISH WALK-IN ROOF. VERIFY IN FIELD.
- 9 RESTROOM EXHAUST FAN TO BE INTERLOCKED WITH RESTROOM OCCUPANCY SENSOR LIGHT SWITCHES SO FAN AND LIGHTS ARE ON WHEN EITHER OF RESTROOM IS OCCUPIED.

GENERAL NOTES

1. ELECTRICAL CONTRACTOR IS RESPONSIBLE FOR ALL ELECTRICAL WORK SHOWN ON THE MECHANICAL DRAWINGS. (EXCEPT LOW VOLTAGE).
2. ROUTE ALL CONDUITS CONCEALED (INSIDE WALLS AND/OR ABOVE CEILING) WHERE POSSIBLE.
3. SEE MECHANICAL & PLUMBING ROOF PLANS FOR ADDITIONAL ROOF INFORMATION.
4. ALL ELECTRICAL CONDUITS PENETRATING THE ROOF SHALL GO THROUGH ROOF CONDUIT CURB INSTALLED BY GENERAL CONTRACTOR & ROOFING CONTRACTOR; EC SHALL COORDINATE. INSTALL PER ROOFING MANUFACTURER'S RECOMMENDATIONS AND DETAILS.
5. ALL CONDUITS FOR ROOF TOP EQUIPMENT SHALL BE RUN BELOW ROOF DECK TO ELIMINATE TRIPPING HAZARDS AND AVOID DERATING CONDUCTORS FOR SOLAR HEATING. NEC 310.15(B)(5)(c).

LHMT Project No. 21318

THIS DRAWING IS THE PROPERTY OF THE ARCHITECT AND MAY NOT BE REPRODUCED OR USED WITHOUT THE ARCHITECT'S PERMISSION.

INRD national restaurant designers
ARCHITECTS & ENGINEERS
7208 ACC Blvd., second floor, Raleigh, NC 27617
ph: 919 544 0087 fax: 919 544 9399

11.11.2022
SEALED
049994
LHMT ENGINEER LICENSE
NUMBER - C-1369

PROJECT: **HIGHWAY 55**
3.0 PROTOTYPE
1424 CURTIS BRIDGE ROAD
WILKESBORO, NC 28697
DRAWING: **ELECTRICAL ROOF PLAN**

Revisions

THRU ADDENDUM "A"
01/20/2022

△ EQUIP. UPDATE - 06.24.2022

△ CLARIFICATIONS - 11.11.2022

PROJECT DATE
01/07/2022

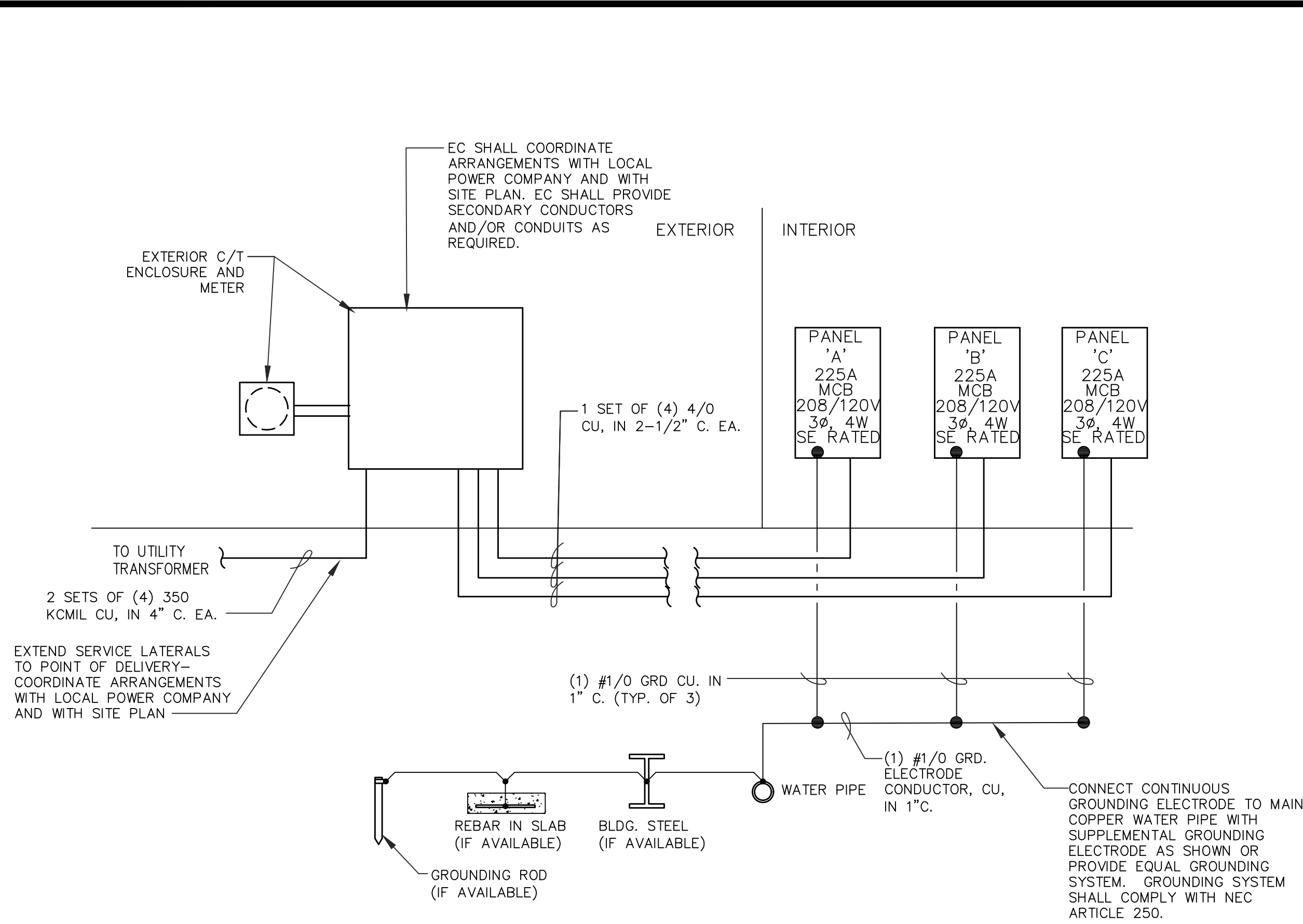
Drawn By
JP

Checked By
JP

Sheet No.

E161

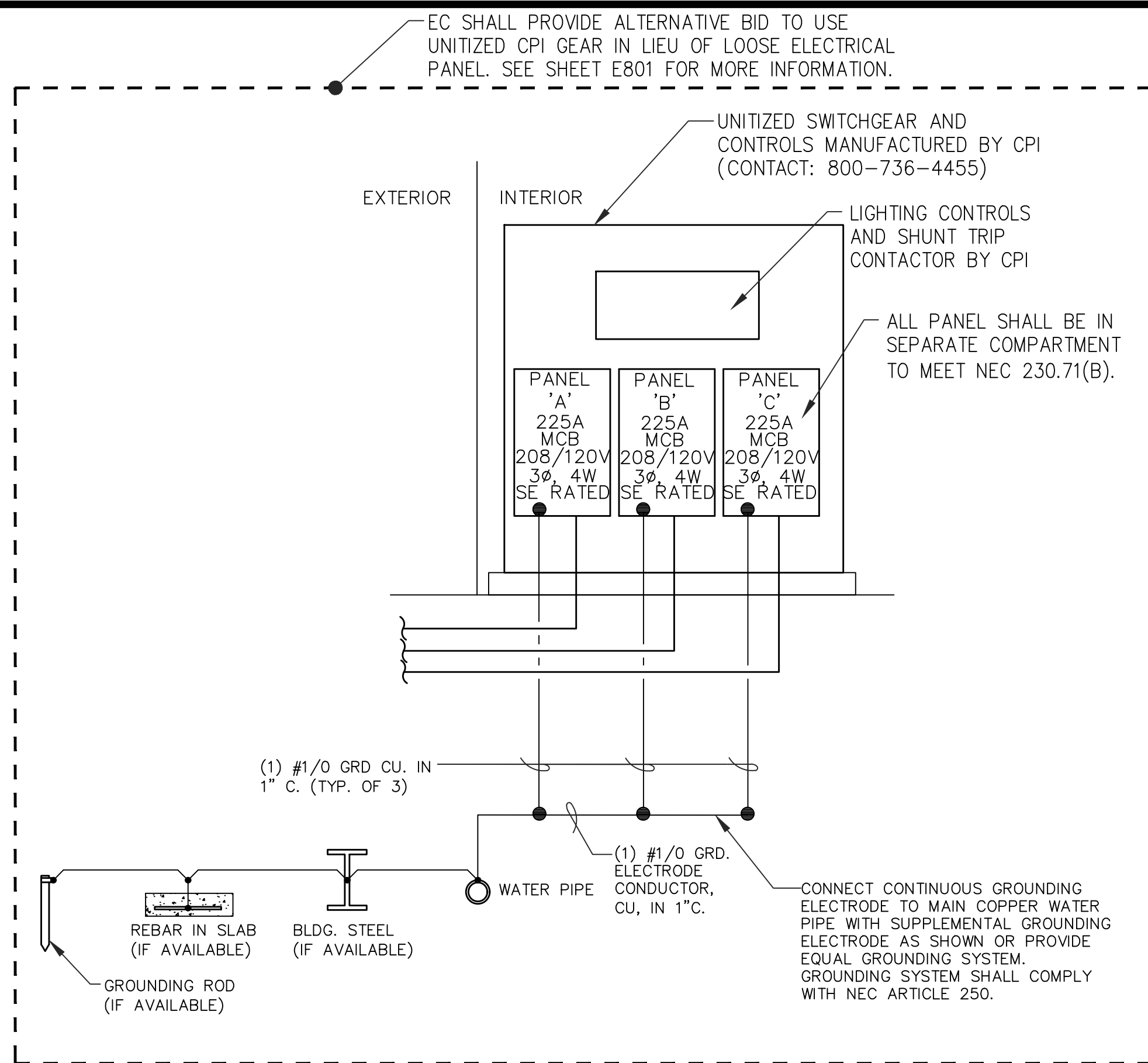
Drawing File: C:\Users\chudson\appdata\local\temp\AcPublish_9574\E601r14.dwg
Plotted by: chudson
Plotted Date: Dec 23, 2022 - 9:47am



1 ELECTRICAL RISER DIAGRAM

SCALE: NTS

E601



- ### GENERAL NOTES
- ALL WIRING AND EQUIPMENT BY EC UNLESS NOTED OTHERWISE.
 - PANELBOARDS "A", "B", AND "C" SHALL BE U.L. LISTED.
 - ALL INTERIOR METAL PIPING (WATER AND GAS) SHALL BE BONDED TO THE SERVICE ENTRANCE ENCLOSURE, THE GROUNDING CONDUCTOR AT THE SERVICE, THE GROUNDING ELECTRODE CONDUCTOR OF SUFFICIENT SIZE OR TO ONE OR MORE GROUNDING ELECTRODES USED. THE BONDING JUMPER SHALL BE SIZED IN ACCORDANCE WITH TABLE 250.66 (FOR WATER). THE GAS PIPING SHALL BE BONDED WITH A JUMPER SIZED PER TABLE 250.122 USING THE RATING OF THE CIRCUIT THAT MAY ENERGIZE THE PIPING, PER NEC 250.104(B).
 - CIRCUIT BREAKERS SHALL BE RATED TO WITHSTAND THE MAXIMUM AVAILABLE FAULT CURRENT AT THE SITE AS DETERMINED BY THE LOCAL ELECTRIC UTILITY. SWITCHGEAR PROVIDER SHALL COORDINATE WITH LOCAL UTILITY TO DETERMINE MAXIMUM AVAILABLE FAULT CURRENT.
 - ELECTRICAL CONTRACTOR SHALL PROVIDE A DIRECTORY, COMPLETELY TYPED TO IDENTIFY CIRCUITS, WITH TRANSPARENT PROTECTOR FOR EACH PANEL.
 - EC SHALL VERIFY ELECTRICAL REQUIREMENTS OF ALL EQUIPMENT W/ NAMEPLATE DATA PRIOR TO INSTALLATION. MATCH RECEPTACLES, PLUGS AND CORD EXTENSIONS AS REQUIRED. PROVIDE DISCONNECT TO MATCH EQUIPMENT WHERE REQUIRED.
 - EC SHALL PROVIDE ALL ELECTRICAL PANELS WITH ARC-FLASH WARNING LABELS PER NEC.
 - EC TO PROVIDE AND INSTALL PLACARDS ON EACH PANEL INDICATING PANEL'S SOURCE, INCLUDING PANEL NAME AND FEEDER CIRCUIT NUMBER AND THE AVAILABLE FAULT CURRENT AND THE DATED CALCULATED.
 - CIRCUIT BREAKERS FOR MULTI-CONDUCTOR CIRCUITS SHALL HAVE A COMMON TRIP FOR ALL CONDUCTORS.
 - PANEL PLACARDS ARE TO BE MADE FROM LAMINATED PLASTIC PROVIDING A BLACK BACKGROUND TO WHITE ENGRAVED LETTERING.
- EC SHALL PROVIDE SERIES RATED SYSTEM FOR PANELS. BRANCH CIRCUIT BARKERS OF A PANEL SHALL BE SERIES RATED WITH MAIN CIRCUIT BREAKER OF THAT PANEL.
- EC SHALL VERIFY WITH LAHU AND LOCAL UTILITY CONSTRUCTION GUIDELINES TO ENSURE FULL COMPLIANCE WITH ELECTRICAL SERVICE REQUIREMENTS. EC SHALL COORDINATE WITH LAHU AND LOCAL UTILITY AND SHALL BE ASSURED OF LOCAL APPROVAL OF SERVICE DESIGN PRIOR TO PURCHASE OR INSTALLATION OF SERVICE EQUIPMENT. CONTACT THE ENGINEER IMMEDIATELY WITH ANY PROBLEMS OR CHANGES. ANY COSTS ARISING FROM FAILURE TO FULLY COORDINATE SERVICE INSTALLATION AND COMPLY WITH LAHU AND LOCAL UTILITY SHALL BE BORNE BY THE EC

CKT. #	DESCRIPTION	NOTE	BREAKER POLE	AMP.	LOAD (KVA)	A	B	C	LOAD (KVA)	BREAKER POLE	NOTE	DESCRIPTION	CKT. #
1	LIGHTS KITCHEN/STORAGE	2	1	20	0.80	1.2			0.40	20	1	2	2
3	LIGHTS SERVING/RR/ EF-3	2	1	20	0.47		1.7		1.20	20	1	2,3	4
5	LIGHTS PENDANTS	2	1	20	0.05			1.3	1.20	20	1	2,3	6
7	LIGHTS DINING	2	1	20	0.61	1.8			1.20	20	1	2,3	8
9	SITE LIGHTING	2	1	20	0.98		1.5		0.50	20	1	6	10
11	SITE LIGHTING	2	1	20	0.78			2.0	1.20	20	1	2,3	12
13	TIME CLOCK CONTROLS	1	1	20	0.10	0.6			0.50	20	1	4,6	14
15	1-DR FREEZER #2	1	1	20	0.38		1.2		0.78	20	1	1	16
17	REFR. PREPBOX TOP PREP#3	1	1	20	0.84			1.6	0.78	20	1	1	18
19	REFR. PREPBOX(BOTTOM PREP)#3	1	1	20	0.84	1.1			0.25	20	1	1	20
21	REFR. PREPBOX(TOP COOK)#3	1	1	20	0.84		1.8		1.00	20	1	1	22
23	REFR. PREPBOX(BOTTOM COOK)#3	1	1	20	0.84			2.4	1.56	20	2	1	24
25	REFR. PREPBOX(BOTTOM) #13	1	1	20	0.78	2.3			1.56				26
27	CHEFBASE #6	1,7	1	20	0.72		1.2		0.50	20	1	6	28
29	CHEFBASE #6	1,7	1	20	0.72		1.2		0.50	20	1	1	30
31	WARMING STATION(TOP) #8	1	2	20	1.49	1.7			0.25	20	1	1	32
33	3#12, #12 G. 1n (1) 3/4" C. EA				1.49		3.1		1.60	20	1	1,7	34
35	WARMING STATION(BOTTOM) #8	1	2	20	1.49			3.3	1.60	20	1	1,7	36
37	2#12, #12 G. 1n (1) 3/4" C. EA				1.49	4.6			3.14	40	3	6,7	38
39	REFRIGERATED WORKTOP(TOP) #9	1	1	20	0.36		3.5		3.14				40
41	REFRIGERATED WORKTOP(BOTTOM)#9	1	1	20	0.36			3.5	3.14				42
43	FROZEN CUSTARD MACHINE #24T	1	2	30	2.49	8.8			6.29	70	3	6,7	44
45	2#10, #10 G. 1n (1) 3/4" C. EA				2.49		8.8		6.29				46
47	FROZEN CUSTARD MACHINE #24T	1	2	30	2.28			8.6	6.29				48
49	2#10, #10 G. 1n (1) 3/4" C. EA				2.28	3.5			1.20	20	1	1,7	50
51	SPACE						1.2		1.20	20	1	1,7	52
53	SPACE		1					0.2	0.18	20	1	1	54
					25.7	23.9	24.0	TOTAL KVA PER PHASE					
					214	199	200	AMPS PER PHASE					
VOLTAGE 208Y/120V													
PHASE 3													
LOCATION SEE PLAN													
WIRE 4													
MOUNTING RECESSED													
MAINS 225 MCB													
FEEDER SEE RISER													
RATING 225 (AMPS)													
MIN AIC SEE FAULT CALC													
WITH I.G. BAR NO													
PANEL "A"													
ITEMS													
CON. %													
DEM. %													
RECEPTACLES 0.0 code 0.0													
KITCHEN 63.2 65% 41.1													
HVAC 0.0 100% 0.0													
LIGHTS (INT.) 1.9 125% 2.4													
LIGHTS (EXT.) 2.2 125% 2.7													
MISC. 6.3 100% 6.3													
TOTAL KVA 73.6 52.5													
TOTAL AMPS 204 146													
NOTES:													
1) PROVIDE GFCI BREAKER.													
2) CONTROLLED VIA CONTACTOR.													
3) PROVIDE LOCKABLE BREAKER PER NEC 600.6													
4) PROVIDE GFCI BREAKER.													
5) PROVIDE HACR TYPE BREAKER													
6) PROVIDE LOCKABLE BREAKER PER NEC 422.31													
7) WIRED VIA SHUNT TRIP CONTACTOR FOR SHUNT TRIP CONTROL.													

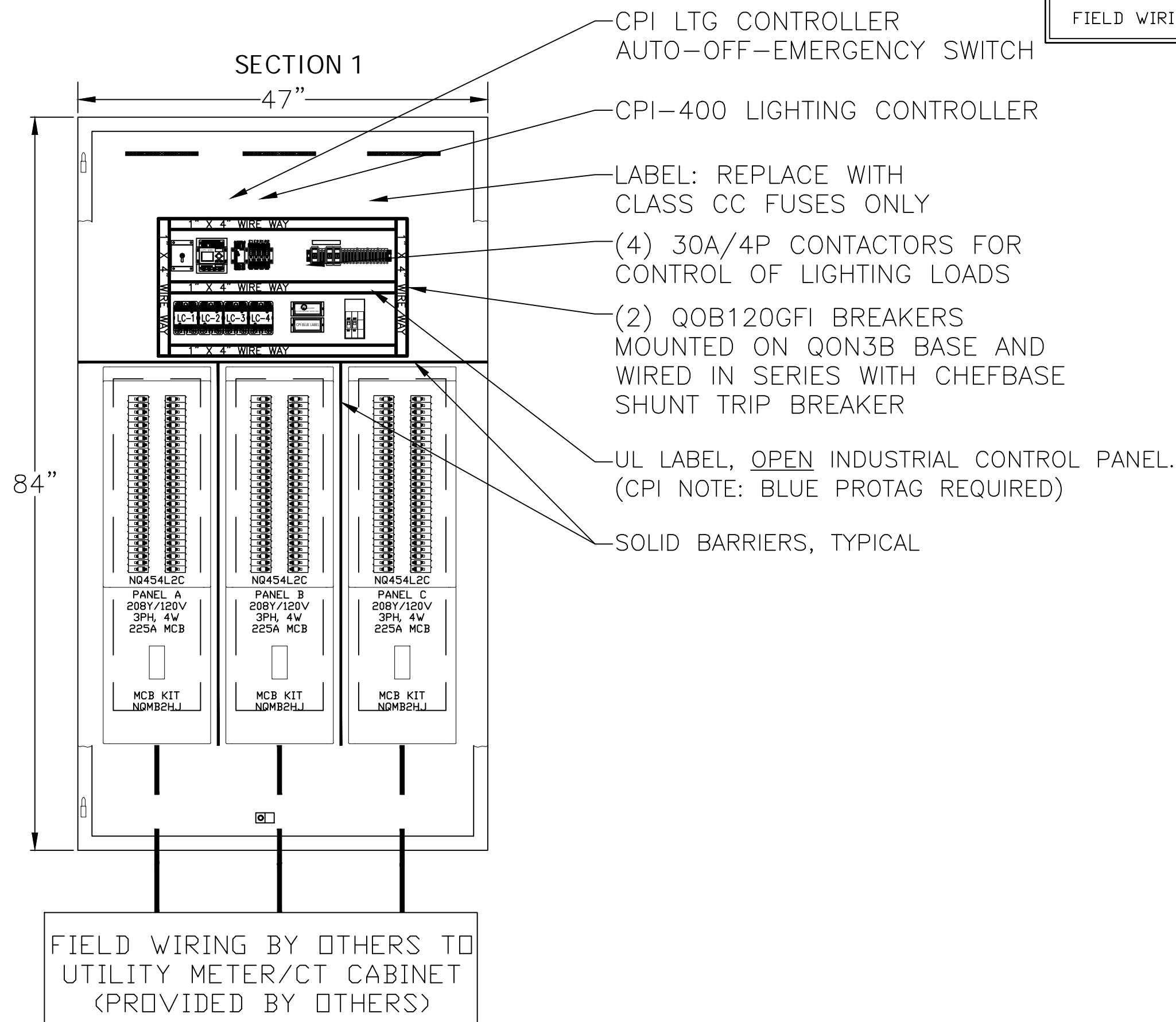
CKT. #	DESCRIPTION	NOTE	BREAKER POLE	AMP.	LOAD (KVA)	A	B	C	LOAD (KVA)	BREAKER POLE	NOTE	DESCRIPTION	CKT. #	
1	MONI./PRINT./BUMP.#14A/14B/14C	1,4	1	20	1.44	1.6			0.17	20	1	1	DIPPING CABINETS #22	2
3	MONI./PRINT./BUMP.#14A/14B/14C	1,4	1	20	0.72		0.8		0.12	20	1	1	PEPSI MACHINE (DT) #26	4
5	DATA RACK	1,4	1	20	0.36			0.5	0.12	20	1	1	PEPSI MACHINE (SERVING) #26	6
7	DATA RACK	1,4	1	20	0.36	2.0			1.68	20	1	1	COFFEE/TEA BREWER #33	8
9	OFFICE IG RECEPTACLES	1,4	1	20	0.36	0.7			0.36	20	1	1	JUICE DISPENSER #28	10
11	KITCHEN GENERAL PURPOSE REC	1	1	20	0.18			2.0	1.80	20	1	1	COFFEE BREWER #33B	12
13	OUTSIDE GFI RECEPTACLES (LEFT)	1	1	20	0.36	0.6			0.24	20	1	1	REFRIGERATOR #17	14
15	BAR USB RECEPTACLES	1	1	20	0.72		1.8		1.08	20	1	1	3 DOOR COOLER #48	16
17	OUTSIDE GFI RECEPTACLES (RIGHT)	1	1	20	0.54			1.4	0.84	20	1	1	SERVI ROBOT #99	18
19	OUTSIDE GFI RECEPTACLE (BACK)	1	1	20	0.18	0.9			0.72	20	1	1,4	POS FRONT COUNTER #35	20
21	RESTROOM RECEPTACLES	1	1	20	0.36		1.1		0.72	20	1	1,4	POS DT #35	22
23	RESTROOM SENSORS POWER	3	1	20	0.10			0.1			1		SPACE	24
25	MONITOR #14A	1,4	1	20	0.18	0.2					1		SPACE	26
27	TV IN DINING	1	1	20	0.36		0.5		0.17	20	1	1	DIPPING CABINETS (DT) #22	28
29	COOKER/WARMER (TOP) #12	1	1	20	1.80			2.5	0.72	20	1	1,4	MONI./BUMP.#14A/14B	30
31	IRRIGATION CONTROLLER	1	1	20	0.18	0.5			0.36	20	1		ABOVE CEILING RECEPTACLE	32
33	MODULAR B1B RACK #42	1	1	20	0.18		2.0		1.80	20	1	1	COOKER/WARMER (BOTTOM) #12	34
35	STEAMER (TOP) #11	1	2	20	1.65			2.2	0.54	20	1	1	CEILING RECEPTACLES	36
37	2#12, #12 G. 1n (1) 3/4" C. EA	1	2	20	1.65	4.8			3.14	40	3	3,5	ELECTRIC GRIDDOE #65	38
39	STEAMER (BOTTOM) #11	1	2	20	1.65		4.8		3.14				3#8, #10 G. 1n (1) 3/4" C. EA	40
41	2#12, #12 G. 1n (1) 3/4" C. EA				1.65			4.8	3.14					42
43	SPACE		1			0.0				1			SPACE	44
45	SPACE		1			0.0				1			SPACE	46
47	SPACE		1			0.0		0.0		1			SPACE	48
49	SPACE		1			0.0				1			SPACE	50
51	SPACE		1			0.0				1			SPACE	52
53	SPACE		1					0.0		1			SPACE	54
						10.7	11.7	13.4	TOTAL KVA PER PHASE					
						89	98	112	AMPS PER PHASE					
VOLTAGE 208Y/120V PHASE 3 WIRE 4 MAINS 225 MCB RATING 225 (AMPS) WITH I.G. BAR YES														
MODEL SQUARE D NQ LOCATION SEE PLAN MOUNTING RECESSED FEEDER SEE RISER MIN AIC SEE FAULT CALC														
NOTES: 1) PROVIDE GFCI BREAKER. 2) VERIFY WITH EQUIPMENT NAMEPLATE DATA. 3) PROVIDE LOCKABLE BREAKER PER NEC 422.31 4) PROVIDE (2) #12, #12G., #12 ISO. G., 1N 3/4" C. 5) WIRED VIA SHUNT TRIP CONTACTOR FOR SHUNT TRIP CONTROL.														
PANEL "B"														
ITEMS														
RECEPTACLES 6.6 code 6.6														
KITCHEN 26.1 65% 17.0														
HVAC 0.0 100% 0.0														
LIGHTS (INT.) 0.0 125% 0.0														
LIGHTS (EXT.) 0.0 125% 0.0														
MISC. 3.2 100% 3.2														
TOTAL KVA 35.9 26.7														
TOTAL AMPS 100 74														

#	DESCRIPTION	NOTE	BREAKER	POLE	AMP.	LOAD (KVA)	A	B	C	LOAD (KVA)	BREAKER	POLE	NOTE	DESCRIPTION	CKT. #	
1	RTU-1 FLA: 37.1 MCA: 41	3	3	50	4.45	8.9				4.45	50	3	3	RTU-2 FLA: 37.1 MCA: 41	2	
3	3#6, #10 G. 1n (1) 1" C. EA				4.45		8.9			4.45				3#6, #10 G. 1n (1) 1" C. EA	4	
5					4.45			8.9		4.45					6	
7	SPARE		1	20		0.7				0.72	20	1		ROOF REC	8	
9	SPARE		1	20		0.6				0.61	20	1		AIR CURTAIN #91	10	
11	ICE MACHINE #46	1,3	1	20	1.41			1.4	0.01	20	1	1		WATER FILTER SYSTEM #55	12	
13	ICE MACHINE #46	1,3	1	20	1.41	2.4			0.03	15	3	3,4		MAU-1 FLA: 9	14	
15	SPACE		1					1.0	1.03					3#12, #12 G. 1n (1) 3/4" C. EA	16	
17	SPACE		1					1.0	1.03						18	
19	HOOD CONTROL PANEL #16/HOOD LTS	4	1	15	0.50	1.9			1.39	25	1	3,4		EF-1 FLA: 11.6	20	
21	SPARE	1	1	20				1.4	1.39	25	1	3,4		EF-2 FLA: 11.6	22	
23	GAS WATER HEATER #92	1	1	20	0.18				0.2					SPACE	24	
25	WALK-INS LIGHTS/DOOR HEATER	2	1	20	0.50	5.0			4.48	50	3	3		RTU-3 FLA: 37.3 MCA: 41	26	
27	MAU-1 CU-1 FLA: 11.9	3,4	3	20	1.43		5.9		4.48	48				3#6, #10 G. 1n (1) 1" C. EA	28	
29	3#12, #12 G. 1n (1) 3/4" C. EA				1.43			5.9	4.48						30	
31					1.43	2.0			0.60				3	3	WALK IN FREEZER CONDENSER #47F	32
33	SPACE		1				0.6		0.60					3#12, #12 G. 1n (1) 3/4" C. EA	34	
35	FREEZER EVAPORATOR #47F	3	2	20	0.30			0.9	0.60	20	3	3		WALK IN COOLER CONDENSER #47C	36	
37	2#12, #12 G. 1n (1) 3/4" C. EA				0.30	0.9			0.60						38	
39	COOLER EVAPORATOR #47C	3	2	20	0.30			0.9	0.60					3#12, #12 G. 1n (1) 3/4" C. EA	40	
41	2#12, #12 G. 1n (1) 3/4" C. EA				0.30				0.9	0.60					42	
43	DH-1 FLA: 8.3	2,3	1	15	1.00	1.0					1			SPACE	44	
45	SPACE		1				0.0				1			SPACE	46	
47	SPACE		1					0.0			1			SPACE	48	
49	SPACE		1				0.0				1			SPACE	50	
51	SPACE		1				0.0				1			SPACE	52	
53	SPACE		1					0.0			1			SPACE	54	
							22.9	19.3	19.2	TOTAL KVA PER PHASE						
							190	161	160	AMPS PER PHASE						
VOLTAGE 208Y/120V																
PHASE 3																
LOCATION SEE PLAN																
MOUNTING RECESSED																
WIRING 225 MCB																
RATING 225 (AMPS)																
FEEDER SEE RISE																
MIN AIC SEE FAULT CALC																
WITH I.G. BAR NO																
NOTES:																
1) PROVIDE GFCI BREAKER.																
2) PROVIDE LOCKABLE BREAKER PER NEC 422.31																
3) PROVIDE HARK TYPE BREAKER																
4) COORDINATE WITH HOOD MANUFACTURER AND HOOD SHEETS FOR EXACT REQUIREMENTS.																

Drawing File: C:\Users\chudson\AppData\LocalTemp\AcPublish_16260\EB01r2.dwg
Plotted by: chudson
Plotted Date: Jun 24, 2022 -- 10:39am

CPI UNITIZED SWITCHGEAR

INTERIOR/EXTERIOR VIEWS (NTS)

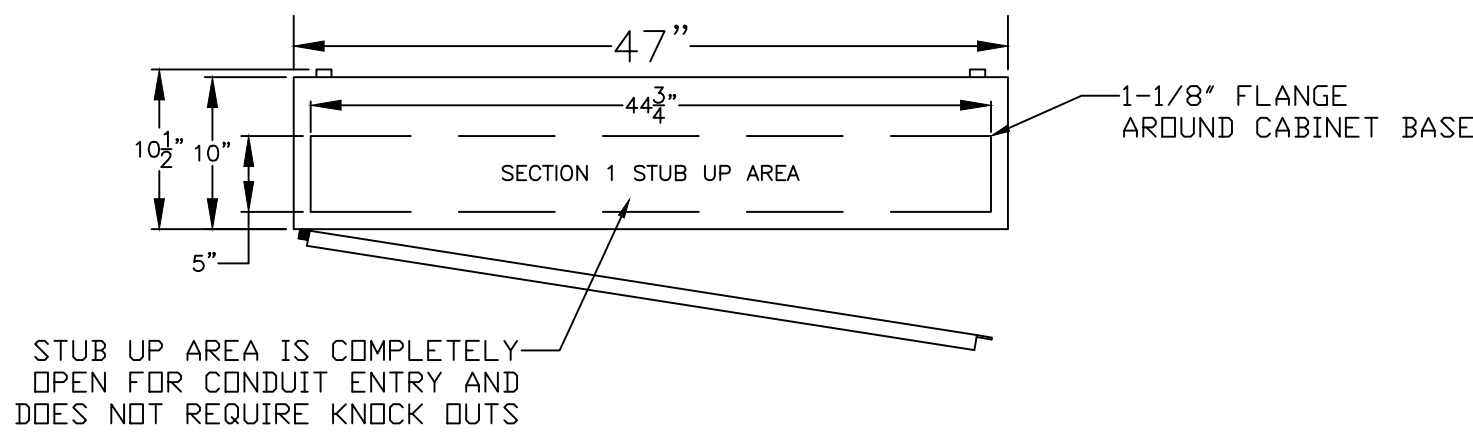


WIRE LEGEND

FACTORY WIRING: _____
FIELD WIRING: _____

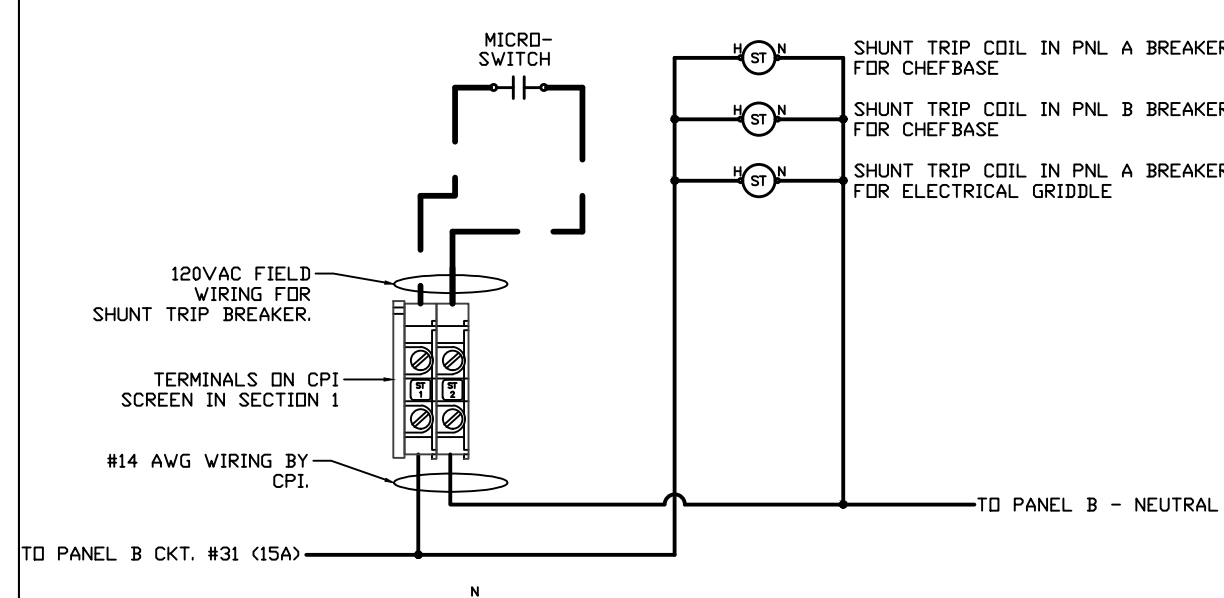
ROUGH-IN DETAIL

NTS



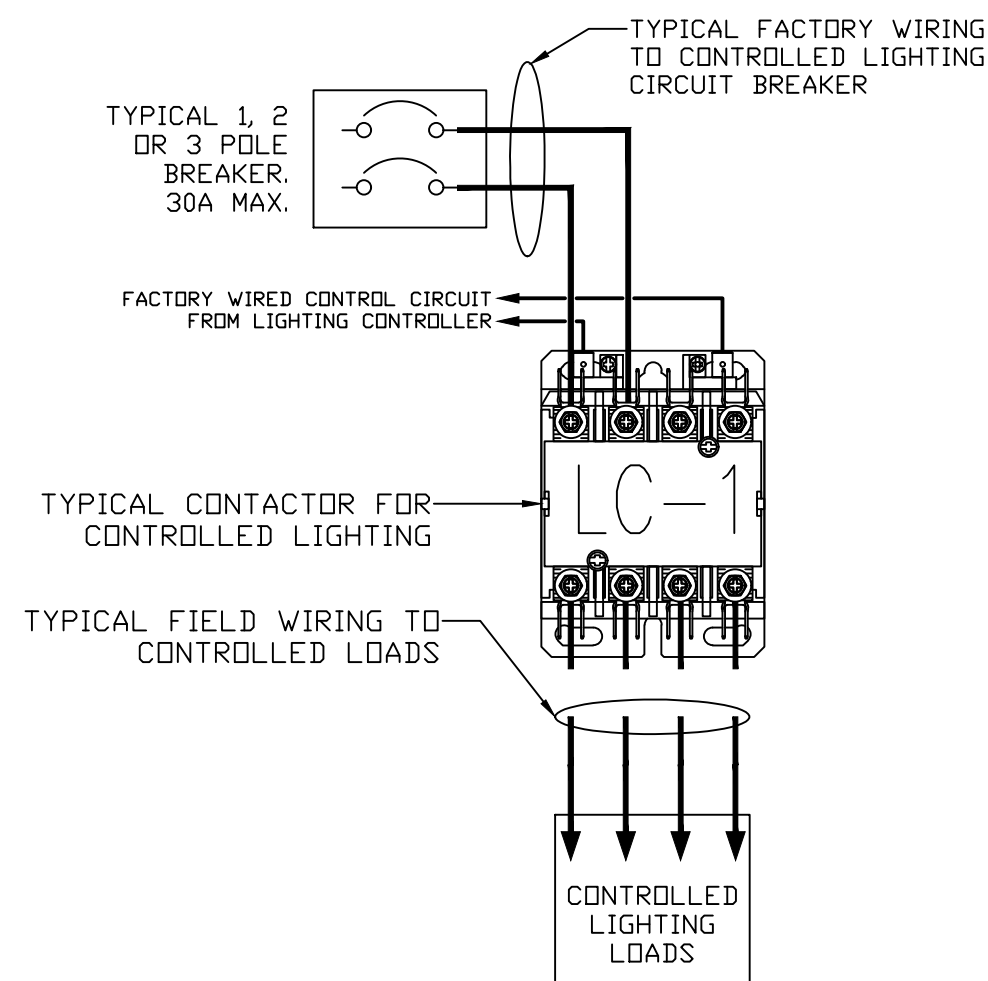
SHUNT TRIP DETAIL

NTS



LIGHTING CONTACTOR DETAIL

TYPICAL



NOTES:

1. TYPICAL CONTACTORS ARE 30 AMPERE, 4 POLE, DEFINITE PURPOSE TYPE.
2. ELECTRICALLY HELD, 120VAC COIL
3. LINE SIDE OF CONTACTOR IS FACTORY WIRED TO 30A MAX. CIRCUIT BREAKER.
4. LOAD SIDE OF CONTACTOR IS FIELD WIRED TO LIGHTING LOADS.
5. CONTROL CIRCUIT IS FACTORY WIRED (#14AWG MIN.) TO LIGHTING CONTROLLER.

DOOR MOUNTED COMPONENTS

LAYOUT & LABELING

ZONE #1

ZONE #2

NOTES:

1. TYPICAL PUSHBUTTONS ARE ILLUMINATED, MOMENTARY CONTACT TYPE WITH 24VDC PILOT LIGHTS.
2. DOOR MOUNTED COMPONENTS ARE FACTORY WIRED AND TAPED TO AVOID ACCIDENTAL CONTACT WITH LIVE PARTS.

PHOTO SENSOR INSTALLATION DETAIL

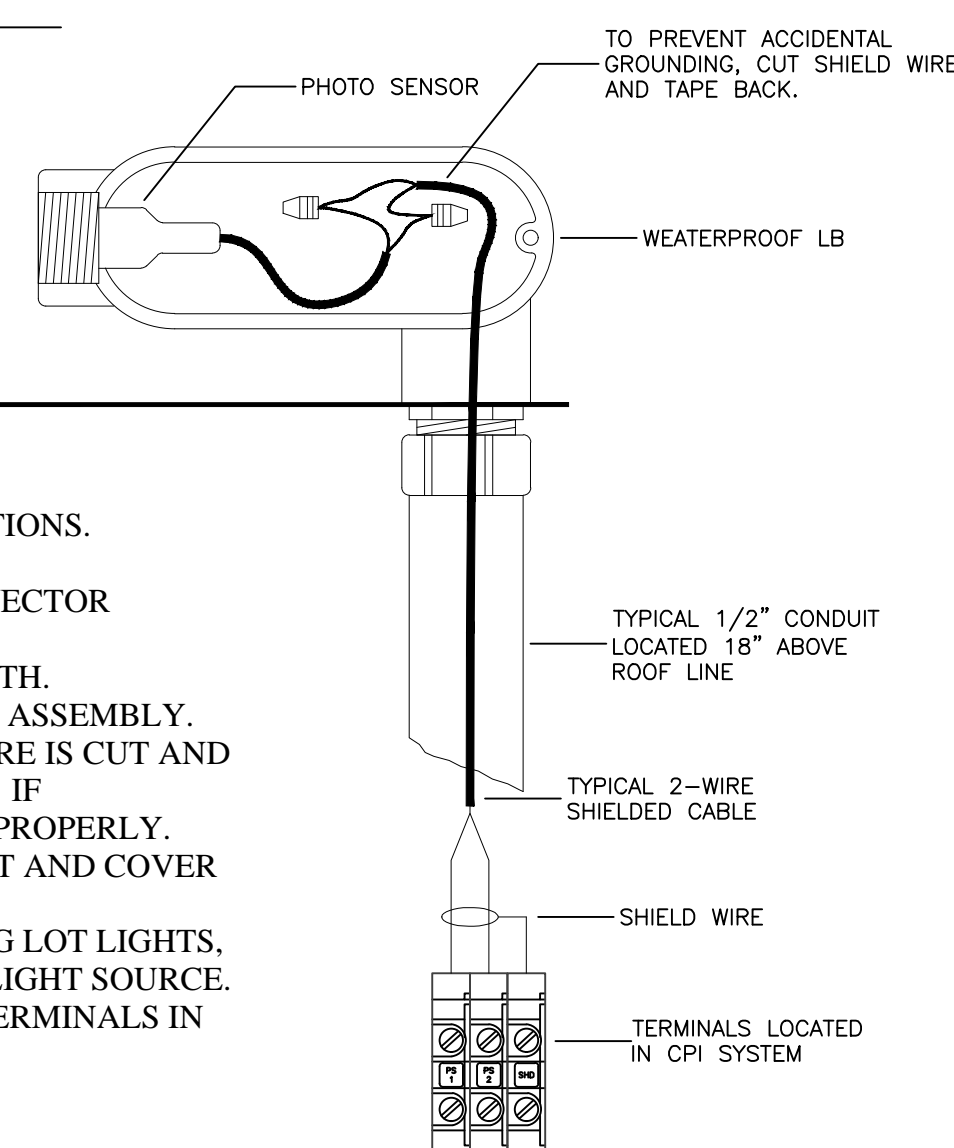
TYPICAL

PSA-1 ASSEMBLY CONTENTS

- 1 - PHOTO SENSOR
- 1 - WEATHERPROOF LB W/ COVER
- 1 - 1/2" CONNECTOR
- 1 - AMBIENT LIGHT SHIELD

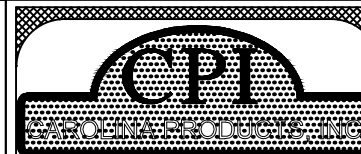
1. SELECT A POSITION ON THE ROOF THAT IS FREE FROM ANY OBSTRUCTIONS.
2. STUB A 1/2" CONDUIT A MINIMUM OF 18" ABOVE THE ROOF LINE.
3. ATTACH THE PSA-1 ASSEMBLY TO THE CONDUIT USING THE 1/2" CONNECTOR PROVIDED WITH THE PSA-1.
4. TO ENSURE PROPER OPERATION, THE PHOTO SENSOR MUST FACE NORTH.
5. PULL A 2-WIRE SHIELDED CABLE FROM THE CPI SYSTEM TO THE PSA-1 ASSEMBLY.
6. CONNECT LIKE COLOR WIRES. IT IS IMPORTANT THAT THE SHIELD WIRE IS CUT AND TAPED BACK AT THE SENSOR TO PREVENT ACCIDENTAL GROUNDING. IF ACCIDENTAL GROUNDING OCCURS, THE SENSOR MAY NOT PERFORM PROPERLY.
7. AFTER ALL WIRING CONNECTIONS HAVE BEEN MADE ATTACH GASKET AND COVER TO WEATHERPROOF LB SUPPLIED AS PART OF PSA-1 ASSEMBLY.
8. IF SENSOR IS EXPOSED TO A BRIGHT LIGHT SOURCE, SUCH AS PARKING LOT LIGHTS, ADJUST THE AMBIENT LIGHT SHIELD TO LIMIT THE EFFECTS OF THIS LIGHT SOURCE.
9. CONNECT THE OTHER END OF THE 2-WIRE SHIELDED CABLE TO THE TERMINALS IN THE CPI SYSTEM AS SHOWN.
10. INSTALLATION IS COMPLETE.

NORTH



NOTE: EC SHALL PROVIDE ALTERNATIVE BID TO PROVIDE AND INSTALLED CPI SWITCHGEAR IN LIEU OF LOOSE ELECTRICAL PANELS.

NOTE: E.C. SHALL REFER TO CPI SHOP DRAWINGS FINAL CONNECTION AND WIRING.



CAROLINA PRODUCTS, INC.
1132 PRO AM DR.
CHARLOTTE, NC 28211
PHONE: (704)-364-9029
FAX: (704)-367-1215

THIS DRAWING IS THE PROPERTY OF
OF CAROLINA PRODUCTS, INC. ANY
USE OR REPRODUCTION WITHOUT
WRITTEN CONSENT IS PROHIBITED

REVISIONS:

REVISION 1:

REVISION 2:

REVISION 3:

SHEET DESCRIPTION:

INTERIOR & EXTERIOR VIEWS
ROUGH-IN DETAILS
PUSHBUTTON LAYOUT
PHOTOCELL INSTALLATION INFO

PROJECT OVERVIEW:

PROJECT NAME:
HWY 55 BURGERS, SHAKES & FRIES

PROJECT CITY:
2022 PROTOTYPE 3.1

CPI PROJECT INFORMATION:

CPI PROJECT #:

DATE:
06/06/2022

DRAWN BY:
AJW

SHEET: 1.0

LHMT Project No. 21318

THIS DRAWING IS THE PROPERTY OF THE
ARCHITECT AND MAY NOT BE REPRODUCED OR
USED WITHOUT THE WRITTEN PERMISSION

SHOP DRAWINGS
FOR REFERENCE

PROJECT: **HIGHWAY 55**
30 PROTOTYPE
1424 CURTIS BRIDGE ROAD
WILKESBORO, NC 28697

DRAWING:
CPI SWITCHGEAR (SHOP DRAWING FOR REFERENCE ONLY)

Revisions

THRU ADDENDUM "A"
01/20/2022

EQUIP. UPDATE - 06.24.2022

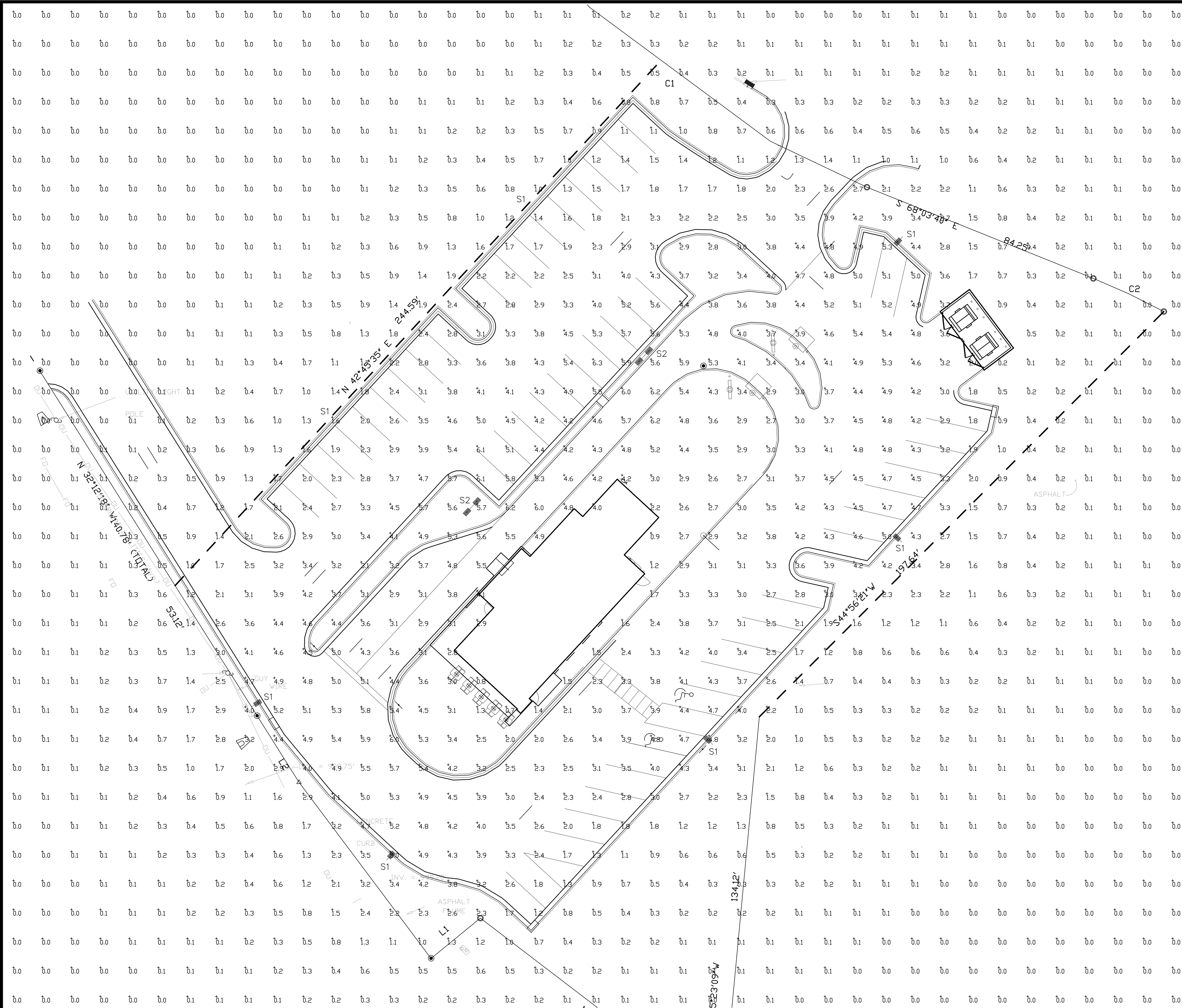
PROJECT DATE
01/07/2022

Drawn By
JP

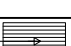

Checked By
JP

Sheet No.

E801



Calculation Summary							
Label	CalcType	Units	Avg	Max	Min	Avg/Min	Max/Min
CALCULATION POINTS @ GRADE	Illuminance	Fc	113	6.3	0.0	N.A.	N.A.
PARKING & DRIVING SUMMARY	Illuminance	Fc	3.71	6.3	1.1	3.37	5.73

Luminaire Schedule					LLD	LDD	LLF	Arr. Lum. Lumens	Arr. Watts
Symbol	Qty	Label	Arrangement	Description					
	5	S1	SINGLE	MRS-LED-24L-SIL-FT-40-70CRI-SINGLE-25' POLE+2' BASE	1,000	1,000	1,000	23640	196
	2	S2	D180°	MRS-LED-24L-SIL-SW-50-70CRI-D180-25' POLE+2' BASE	1,000	1,000	1,000	45044	392

THIS DRAWING IS PROVIDED FOR
REFERENCE ONLY AND IS NOT TO
SCALE. ALL SYSTEMS SHALL MEET
ALL APPLICABLE REQUIREMENTS OF
STATE AND LOCAL CODES AND
OTHER REQUIREMENTS AS SHOWN IN
DESIGN DRAWINGS BY OTHERS.

FOR SITE LIGHTING PRICING CONTACT
ALAN TAPSCOTT.
PHONE: (919) 803-9247
EMAIL:
A.TAPSCOTT@SHANNONANDASSOC.COM

LMHT Project No. 22105

THIS DRAWING IS THE PROPERTY OF THE ARCHITECT AND MAY NOT BE REPRODUCED OR USED WITHOUT THE ARCHITECT'S PERMISSION.

1

FOR REFERENCE ONLY

PROJECT: **HIGHWAY 55**
30 PROTOTYPE

HARRISON AVENUE
BUTTE, MONTANA 59701

DRAWING: SITE PHOTOMETRIC PLAN

Revisions

THRU ADDENDUM "A"
07/28/2022

SITE PLAN UPDATE-12.23.2022

PROJECT DATE
03/15/2022

Drawn By
JP

Checked By
LM

Sheet No.

ES112

4