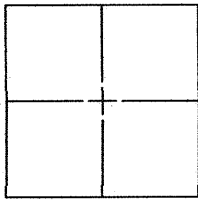


**CORNER RECORD**

Document Number CR 9283

City of BERKELEY County of ALAMEDA, California

Brief Legal Description CITY OF BERKELEY MONUMENT B0377 LOCATED AT THE INTERSECTION OF CHANNING WAY AND MCGEE AVENUE.



**CORNER TYPE**

**COORDINATES (Optional)**

Government Corner ☐ Control ☒  
Meander ☐ Property ☐  
Rancho ☐ Other ☐  
Date of Survey 11/7/16

N. \_\_\_\_\_  
E. \_\_\_\_\_  
Zone \_\_\_\_\_ NAD27 ☐ NAD83 ☐  
NAD83 Epoch \_\_\_\_\_  
Elev. \_\_\_\_\_  
Vet. Datum: NGVD29 ☐ NAVD88 ☐  
Meas. Units: Metric ☐ Imperial ☐

**Corner** — Left as found ☒ Found and tagged ☐ Established ☐ Reestablished ☐ Rebuilt ☐

Identification and type of corner found: Evidence used to identify or procedure used to establish or reestablish the corner:  
THIS CORNER RECORD WAS PREPARED PURSUANT TO SECTION 8771.(b) OF THE CALIFORNIA BUSINESS  
BUSINESS AND PROFESSIONS CODE.

A description of the physical condition of the monument as found and as set or reset: \_\_\_\_\_  
FOUND AND SET POINTS AS SHOWN ON PAGE 2.

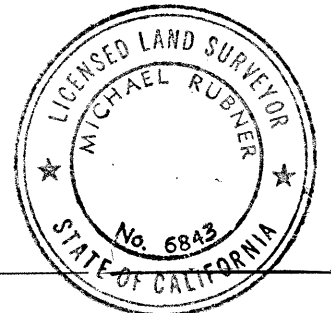
**SURVEYOR'S STATEMENT**

This Corner Record was prepared by me or under my direction in conformance with  
the Land Surveyor's Act on NOVEMBER, 8 20 16  
Signed Patrick M. Rei P.L.S. or R.C.E. No. 8178



**COUNTY SURVEYOR'S STATEMENT**

This Corner Record was received 11 NOVEMBER 20 16  
and examined and filed 3 JANUARY 20 17  
Signed Michael Rubner P.L.S. or R.C.E. No. 6843  
Title COUNTY SURVEYOR



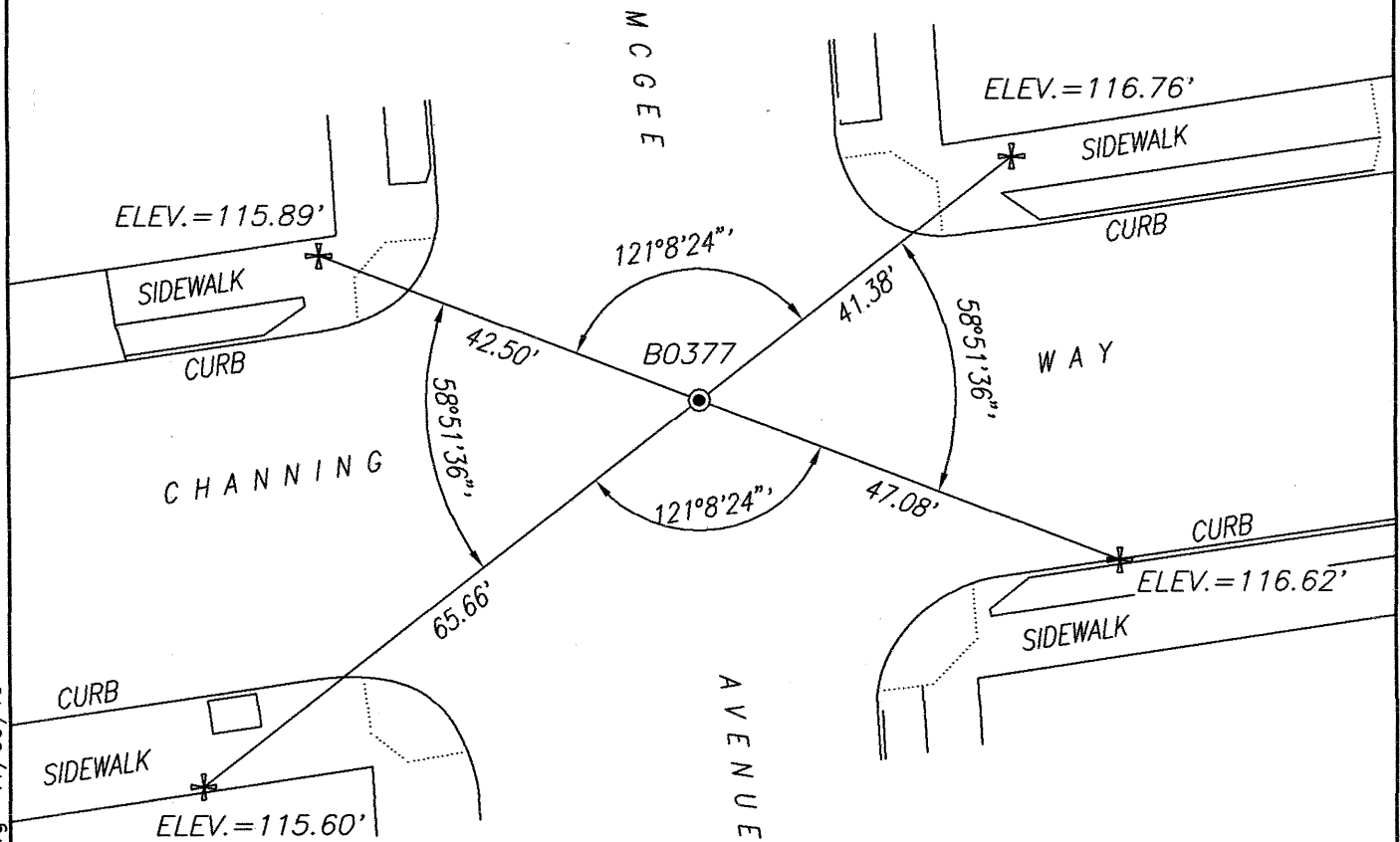
**County Surveyor's Comment:** \_\_\_\_\_

W464 C6

KSR JOB# 19653-16-06

P: \projects\19653\16-06\DWGS\SURVEY\19653-16-06.dwg

NOTE: RP ELEVATIONS ESTABLISHED BY DIFFERENTIAL LEVELING  
UTILIZING A SOKKIA SDL30 DIGITAL LEVEL.

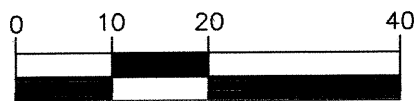


LEGEND

- ✚ = SET CUT CROSS REFERENCE POINT (RP)
- = FOUND CITY MONUMENT B0377; 1/2" IRON PIN IN STANDARD WELL  
ELEVATION = 116.44' COB DATUM



GRAPHIC SCALE



( IN FEET )  
1 inch = 20 ft.