

TRACT 1985

CITY OF NEWARK, ALAMEDA COUNTY
CALIFORNIA

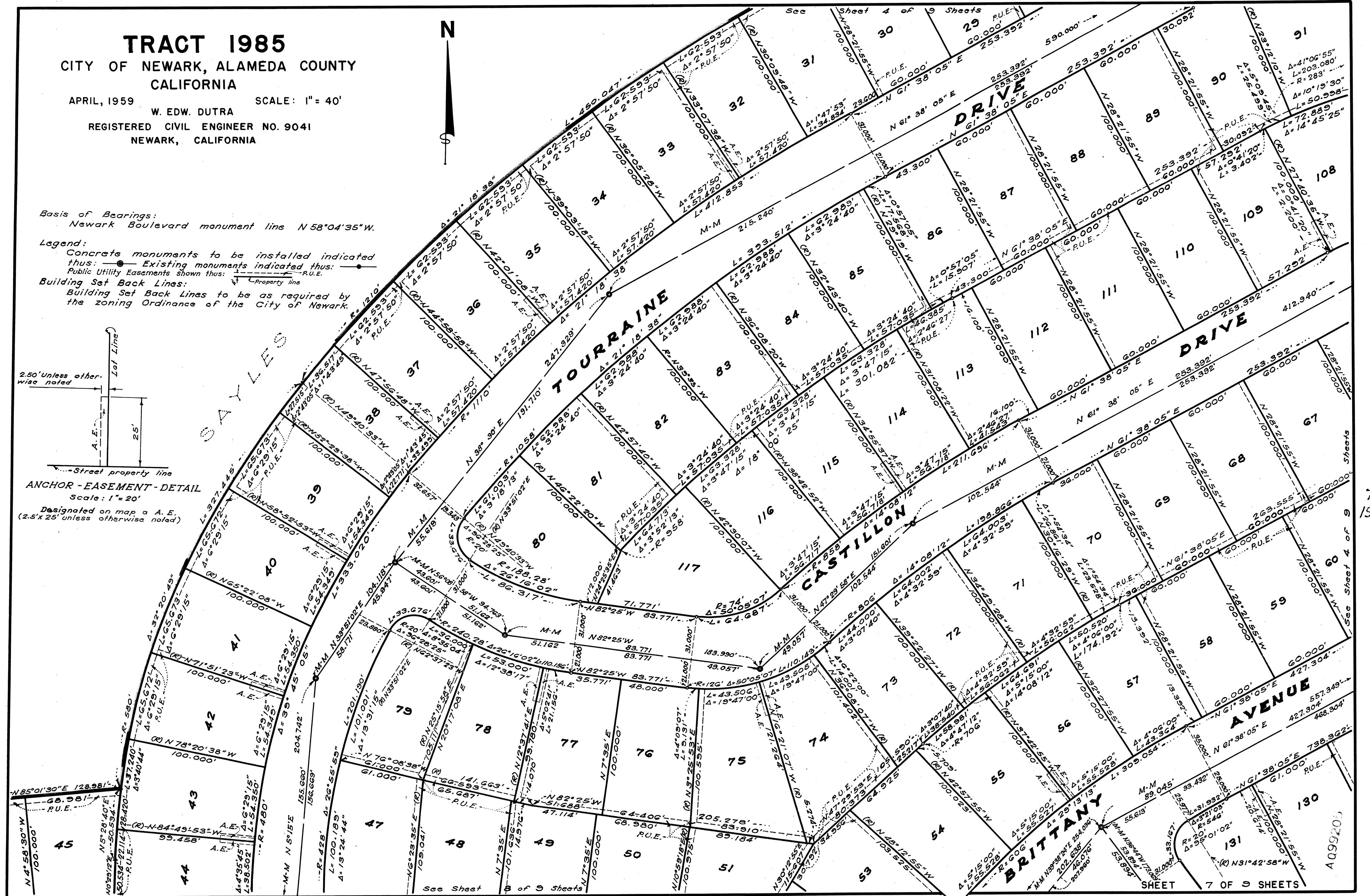
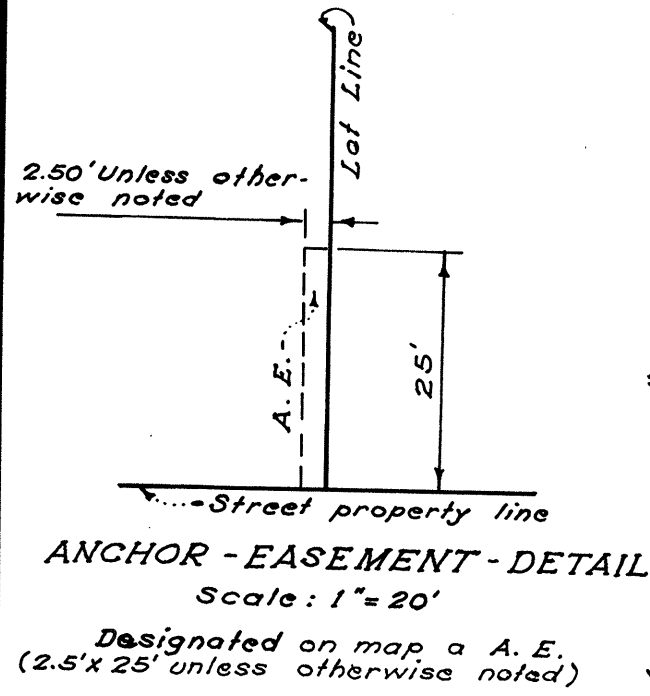
APRIL, 1959 SCALE: 1" = 40'

W. EDW. DUTRA

REGISTERED CIVIL ENGINEER NO. 9041
NEWARK, CALIFORNIA

Basis of Bearings:
Newark Boulevard monument line N 58°04'35"W.

Legend:
Concrete monuments to be installed indicated thus: Existing monuments indicated thus:
Public Utility Easements shown thus: P.U.E.
Building Set Back Lines:
Building Set Back Lines to be as required by the zoning Ordinance of the City of Newark.



TR.
1985